

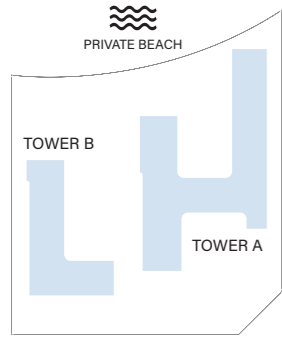


ELLINGTON
PROPERTIES



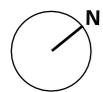
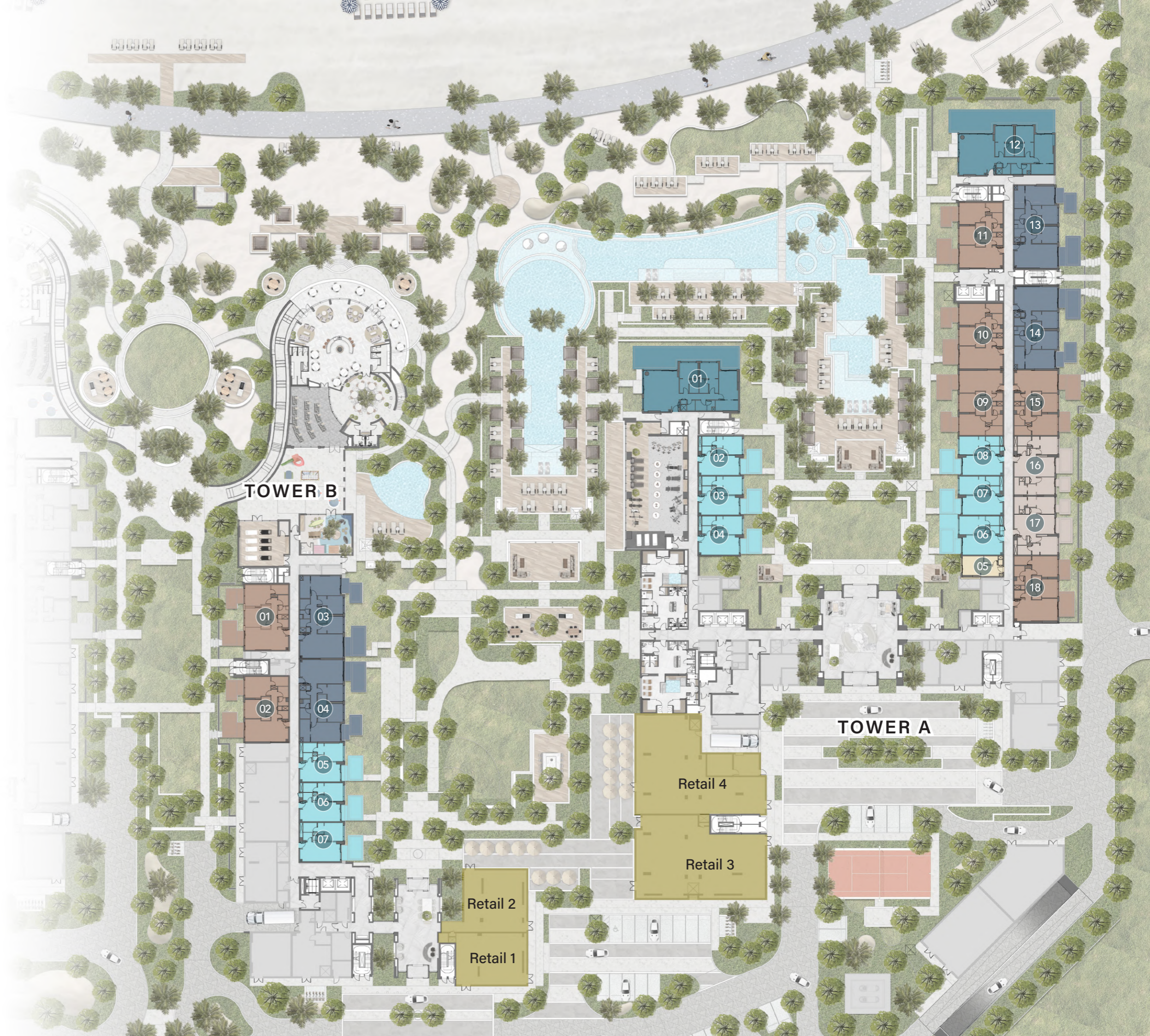
ELLINGTON COVE II

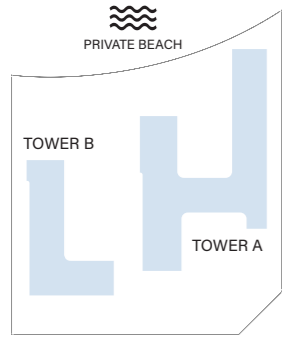
FLOOR PLAN



GROUND FLOOR TYPICAL PLAN

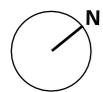
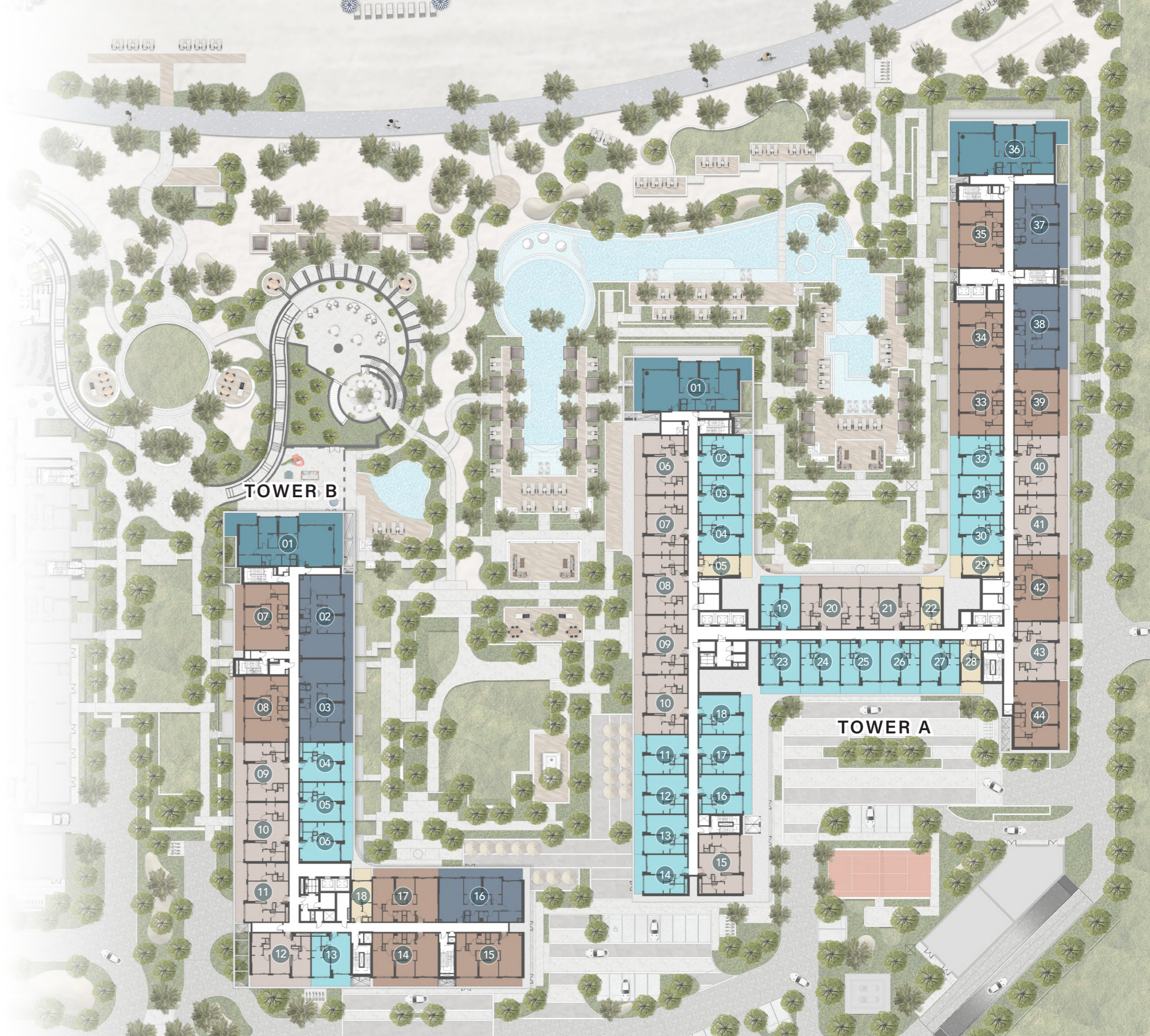
- Studio
- 1 - Bedroom
- 2 - Bedroom
- 2 - Bedroom + S
- 3 - Bedroom
- 3 - Bedroom Deluxe

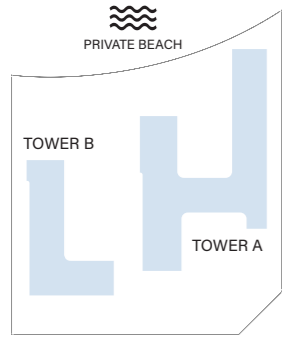




1st FLOOR TYPICAL PLAN

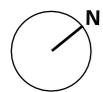
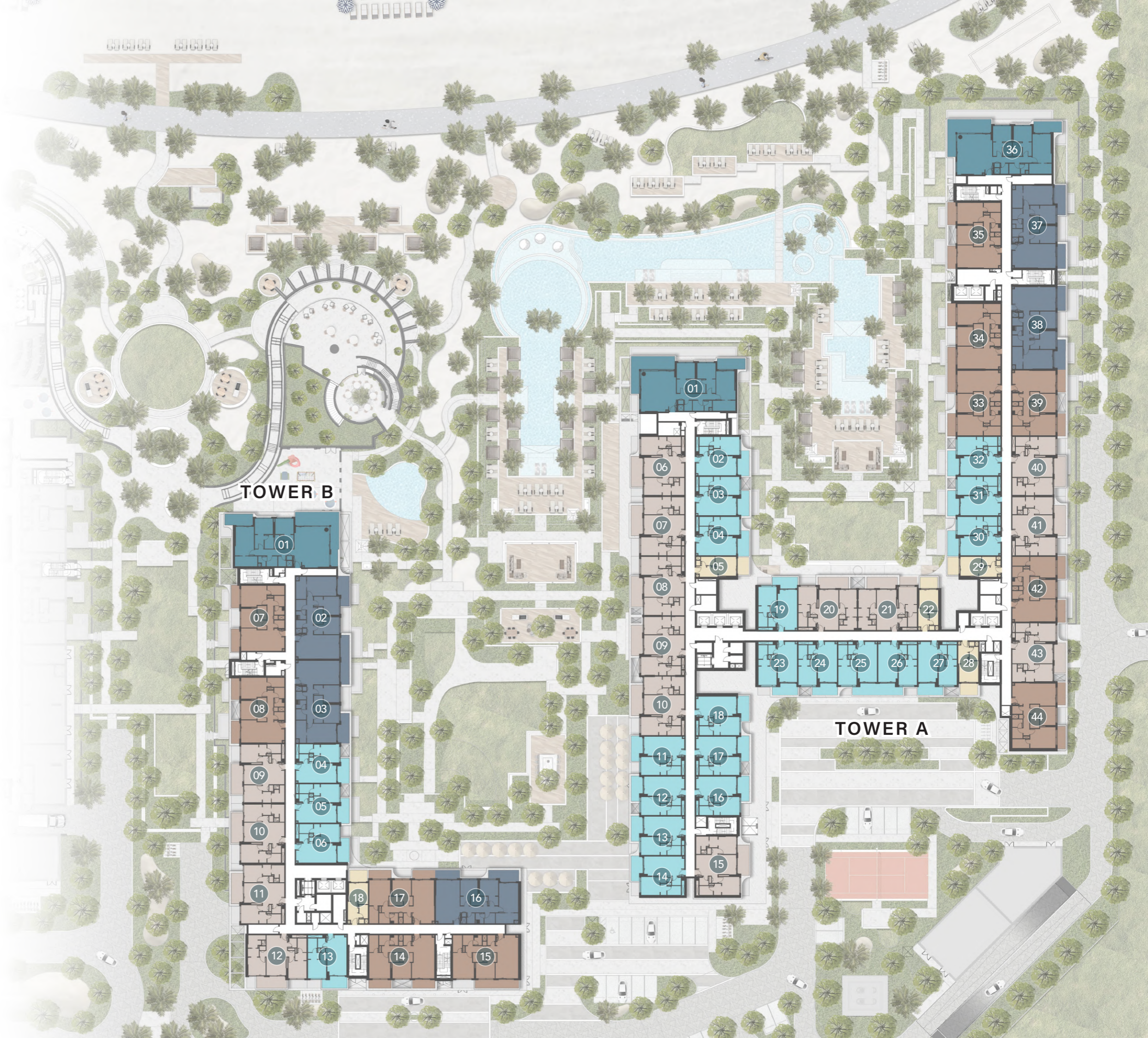
- Studio
- 1 - Bedroom
- 2 - Bedroom
- 2 - Bedroom + S
- 3 - Bedroom
- 3 - Bedroom Deluxe

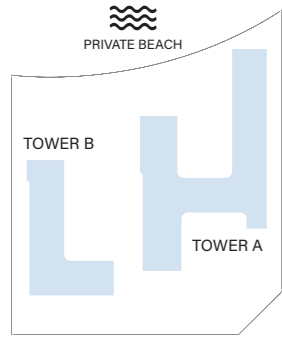




2nd, 4th & 6th FLOOR TYPICAL PLAN

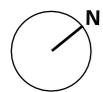
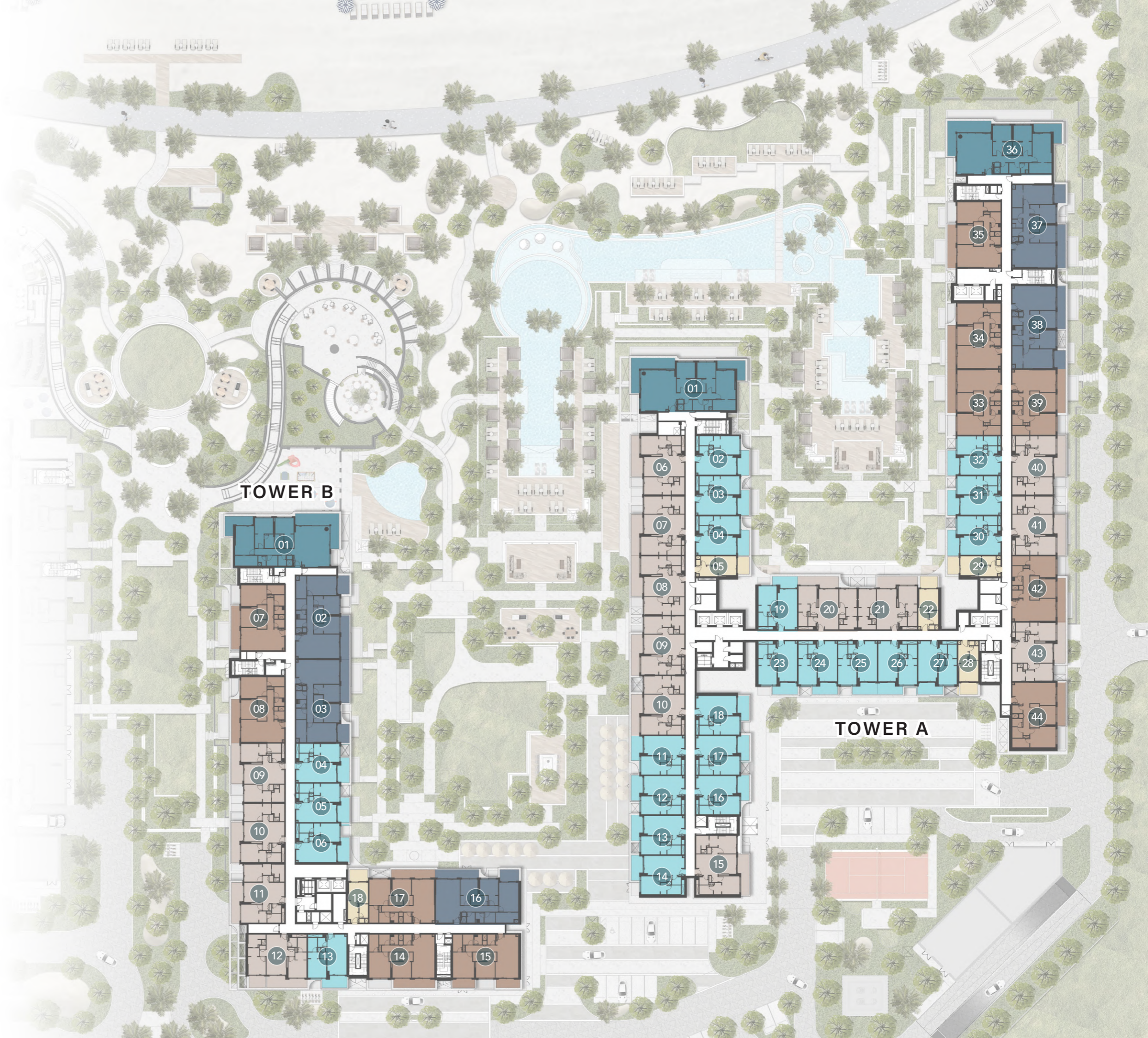
- Studio
- 1 - Bedroom
- 2 - Bedroom
- 2 - Bedroom + S
- 3 - Bedroom
- 3 - Bedroom Deluxe

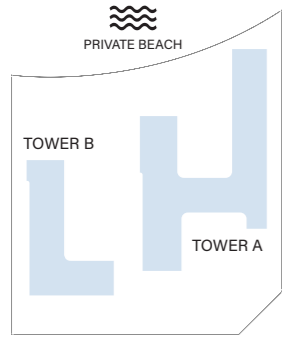




3th & 5th FLOOR TYPICAL PLAN

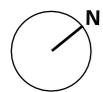
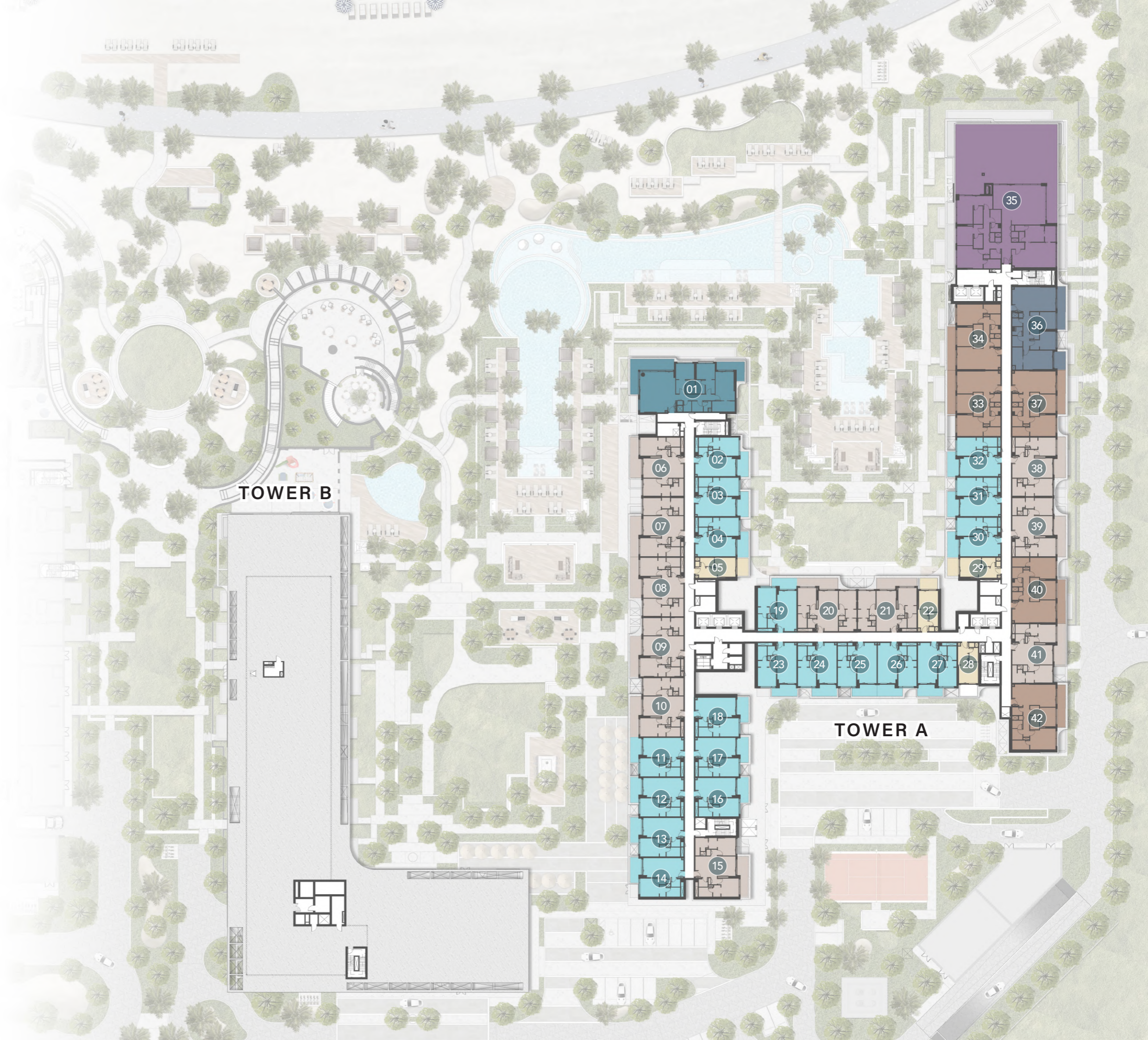
- Studio
- 1 - Bedroom
- 2 - Bedroom
- 2 - Bedroom + S
- 3 - Bedroom
- 3 - Bedroom Deluxe

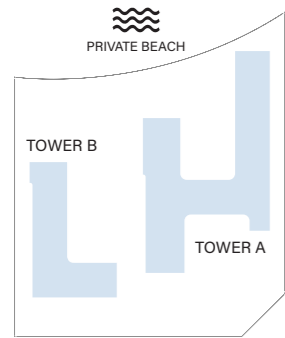




7th FLOOR TYPICAL PLAN

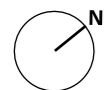
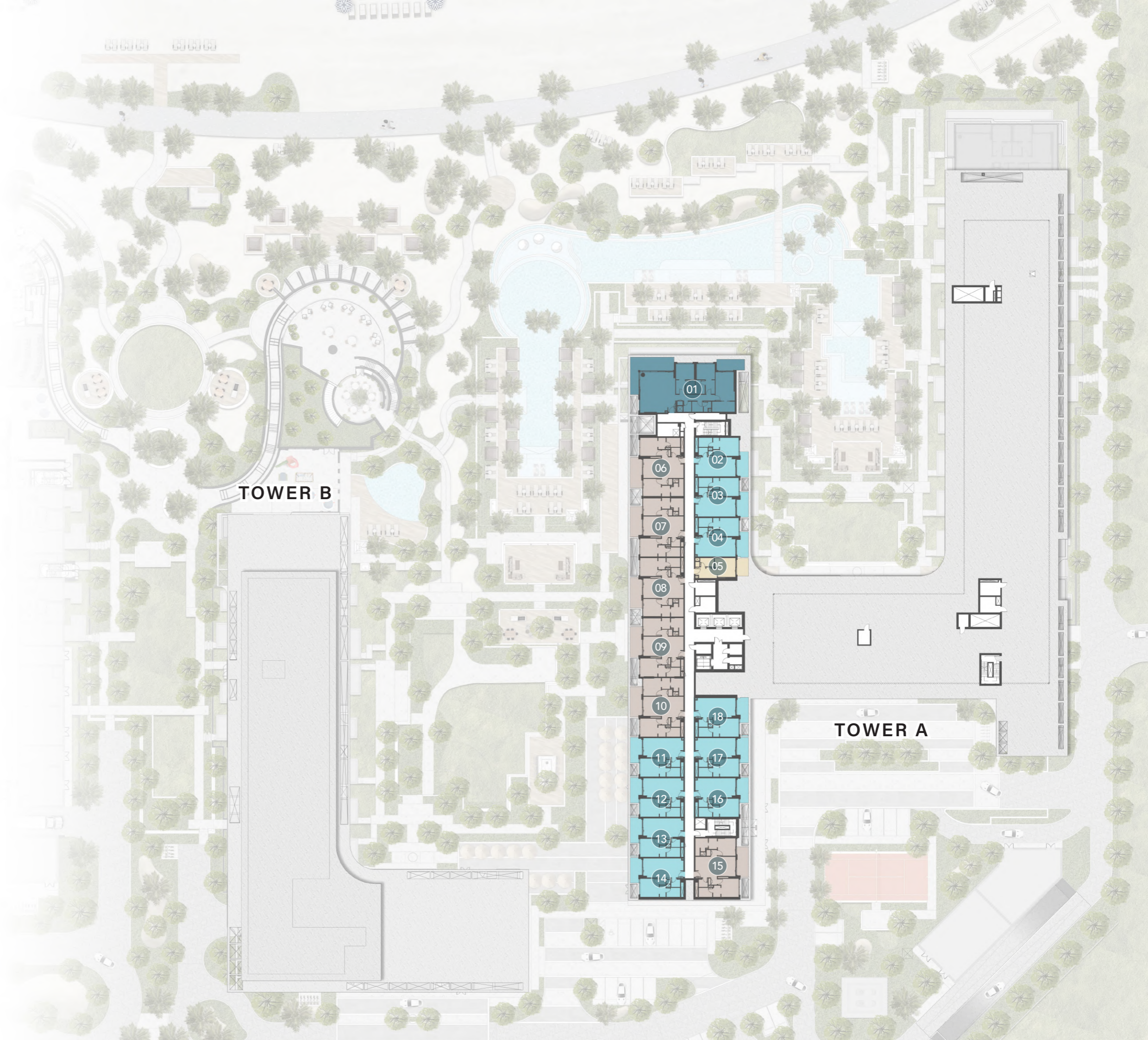
- Studio
- 1 - Bedroom
- 2 - Bedroom
- 2 - Bedroom + S
- 3 - Bedroom
- 3 - Bedroom Deluxe
- 4 - Bedroom Penthouse

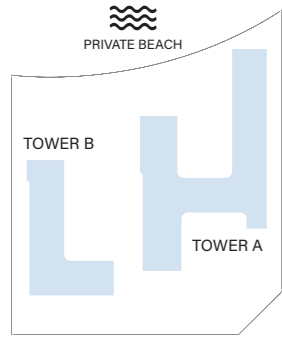




8th FLOOR TYPICAL PLAN

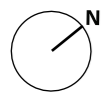
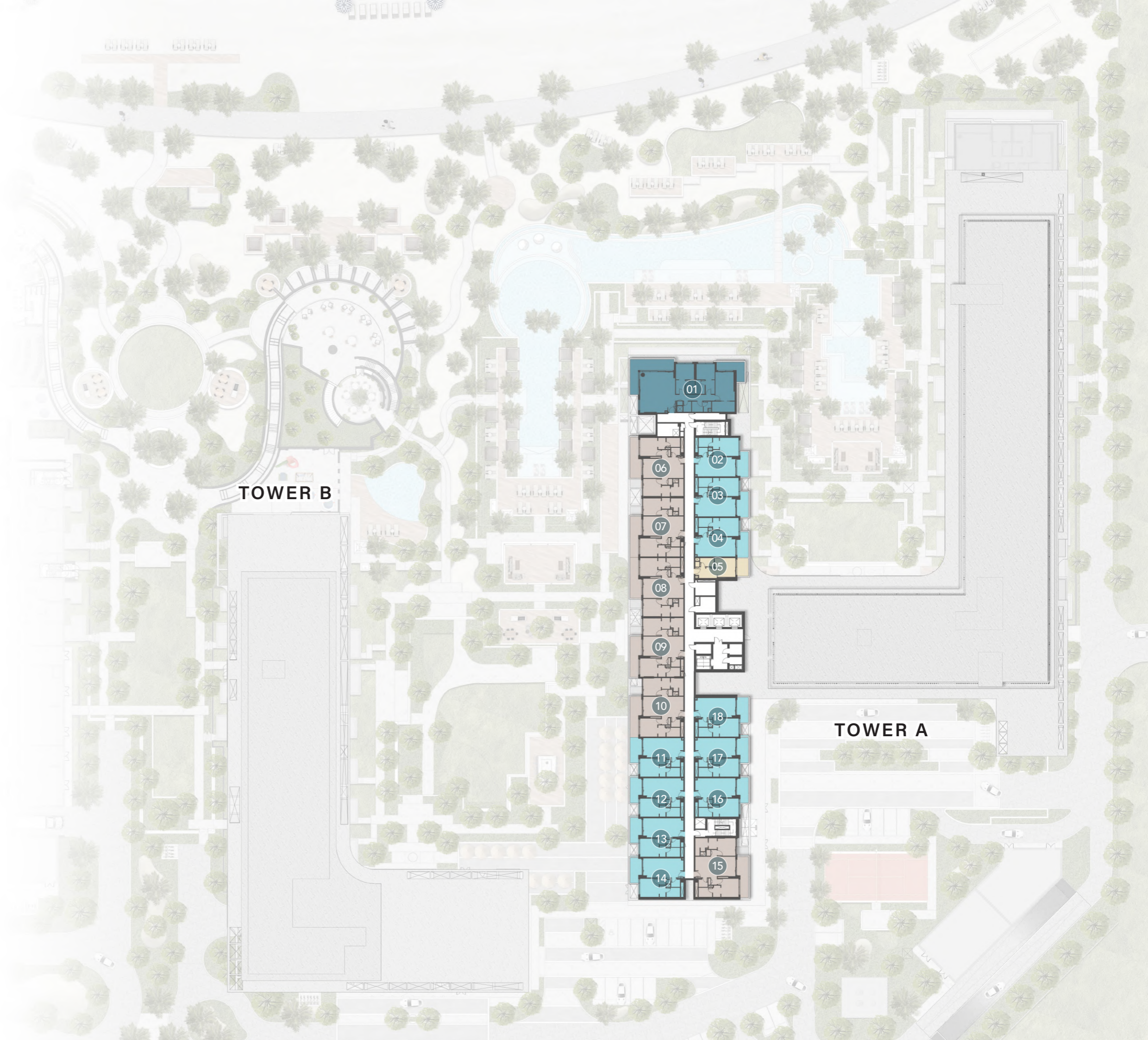
- Studio
- 1 - Bedroom
- 2 - Bedroom
- 3 - Bedroom
Deluxe



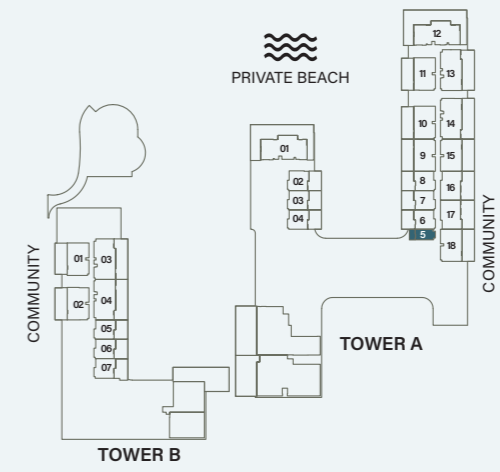
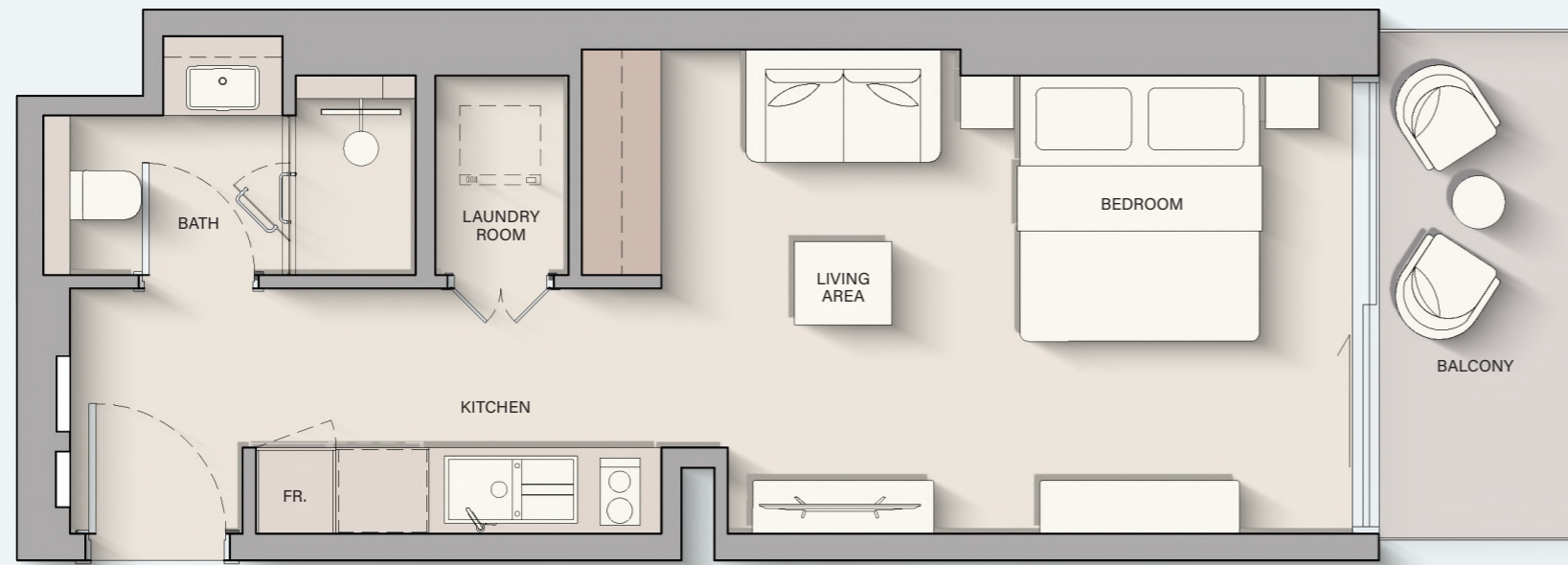


9th FLOOR TYPICAL PLAN

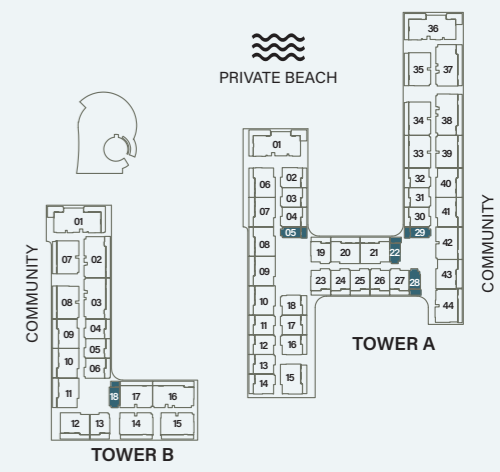
- Studio
- 1 - Bedroom
- 2 - Bedroom
- 3 - Bedroom
Deluxe



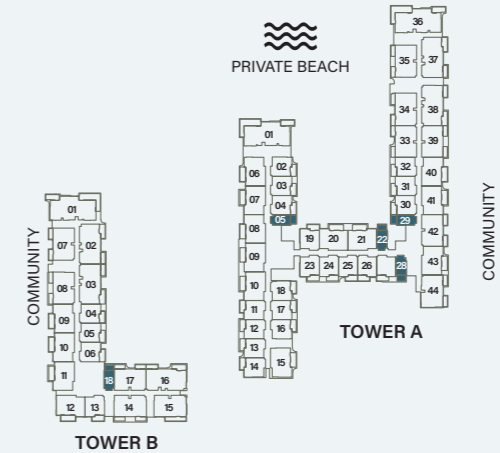
STUDIO



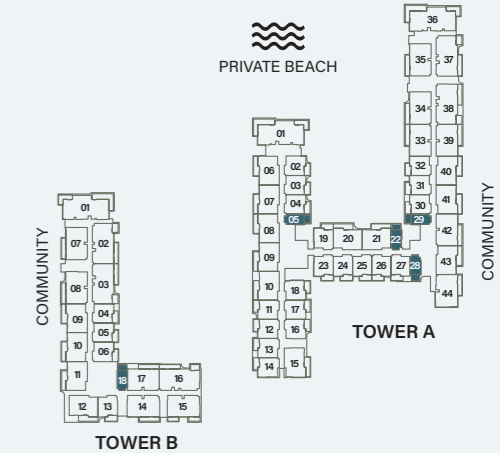
Ground Floor



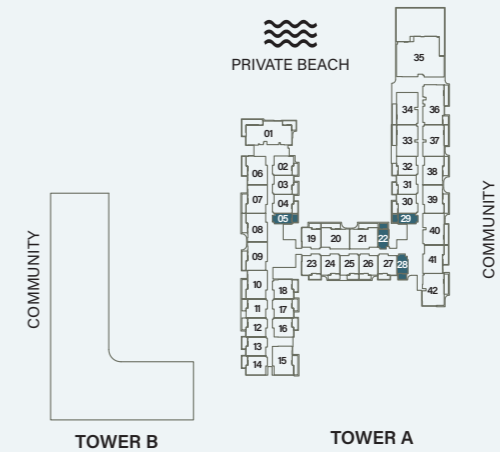
1st Floor



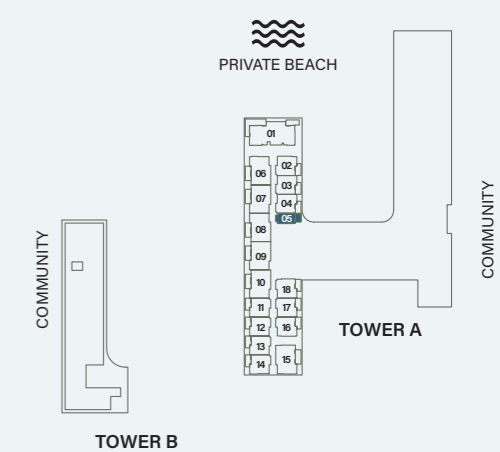
2nd, 4th & 6th Floor



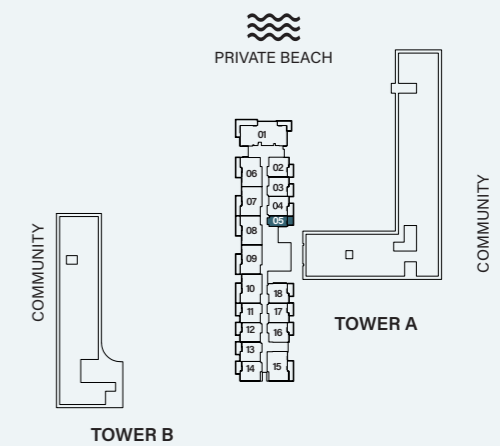
3rd & 5th Floor



7th Floor



8th Floor

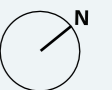


9th Floor

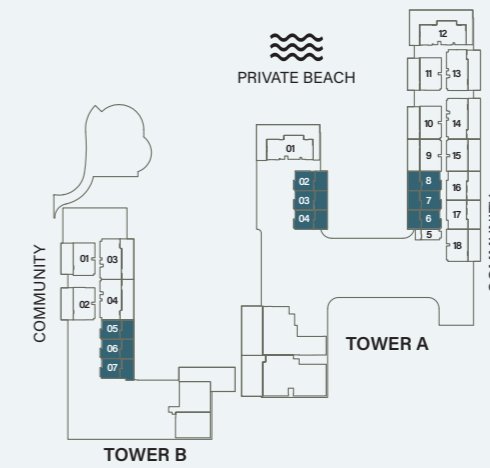
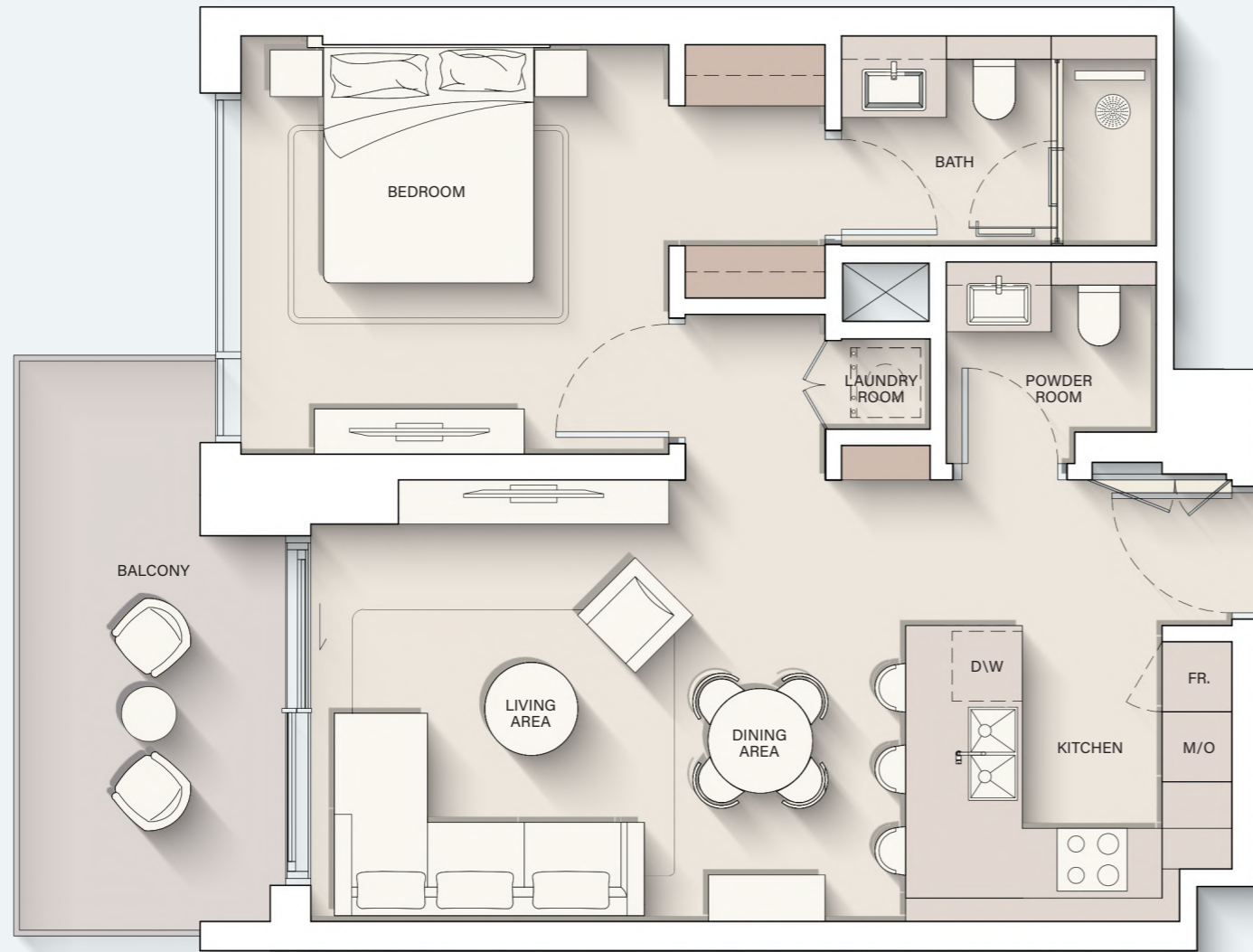
Internal Living Area : **415.06 sq. ft**

Outdoor Living Area : **64.58 sq. ft**

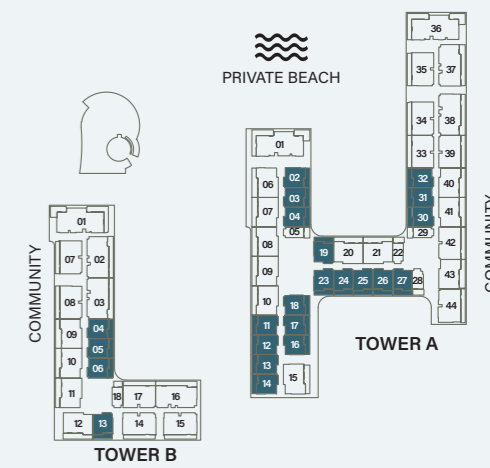
Total Living Area : **479.64 sq. ft**



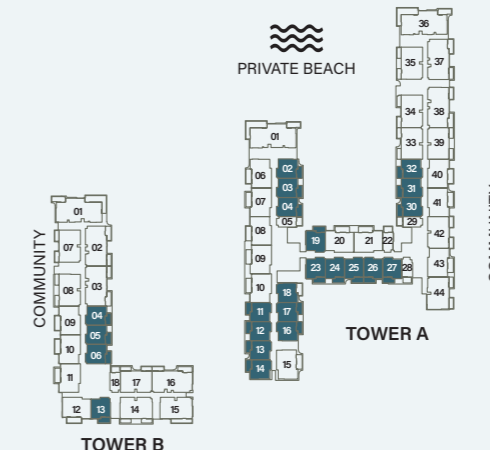
1 - BEDROOM



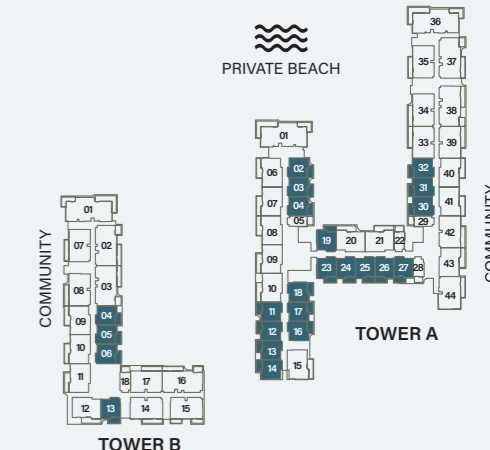
Ground Floor



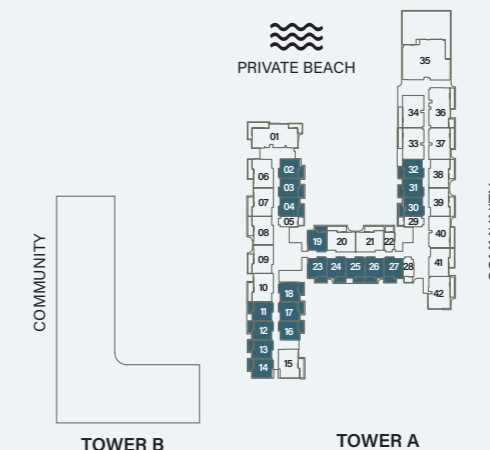
1st Floor



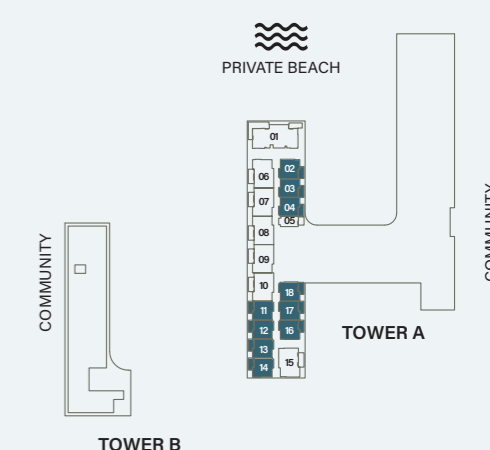
2nd, 4th & 6th Floor



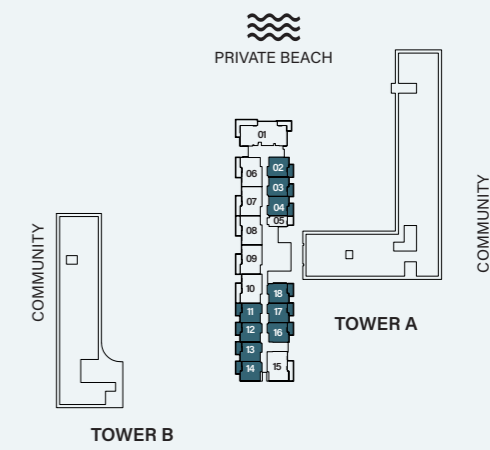
3rd & 5th Floor



7th Floor



8th Floor

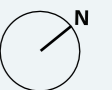


9th Floor

Internal Living Area : **692.44 sq. ft**

Outdoor Living Area : **123.68 sq. ft**

Total Living Area : **816.12 sq. ft**



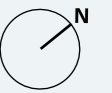
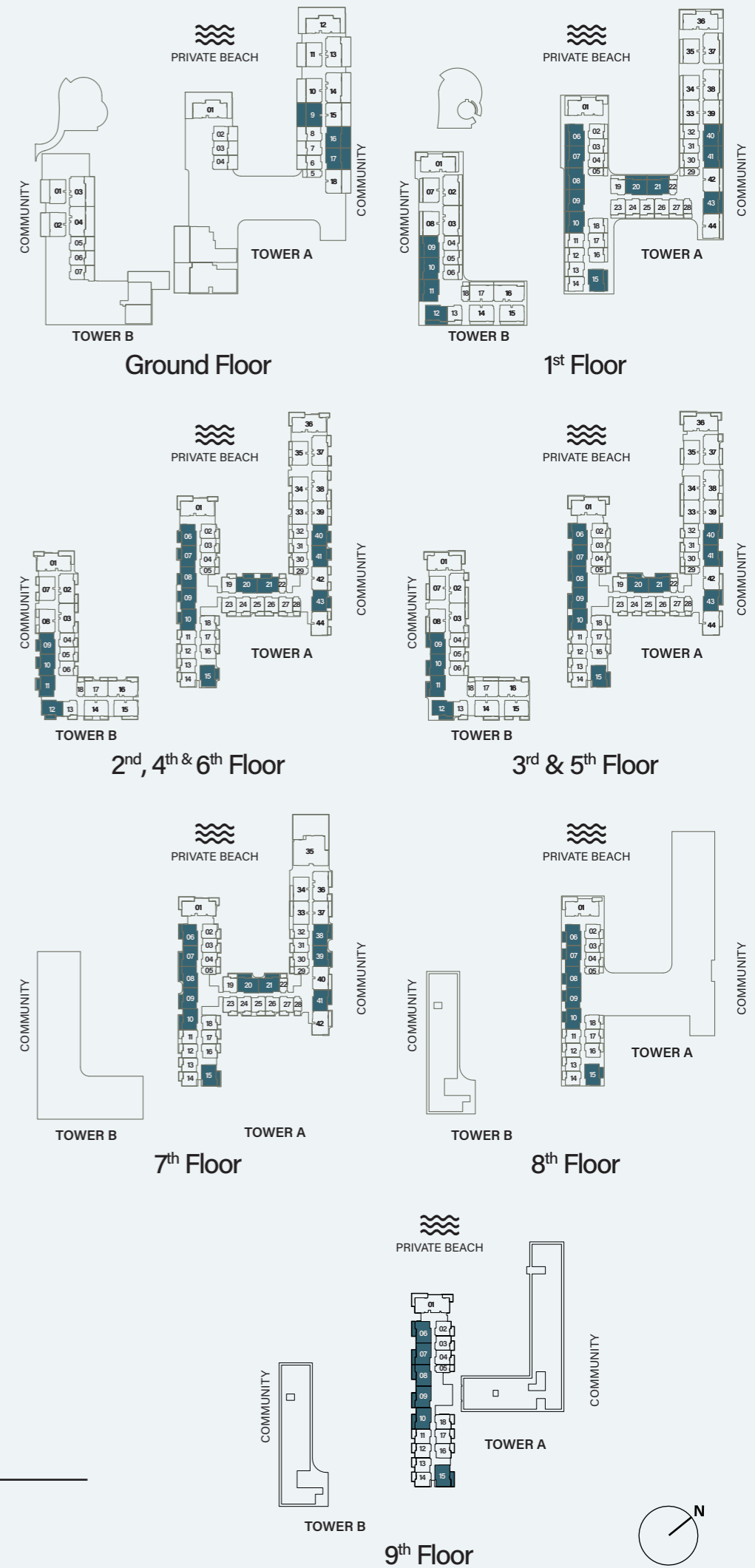
2 - BEDROOM



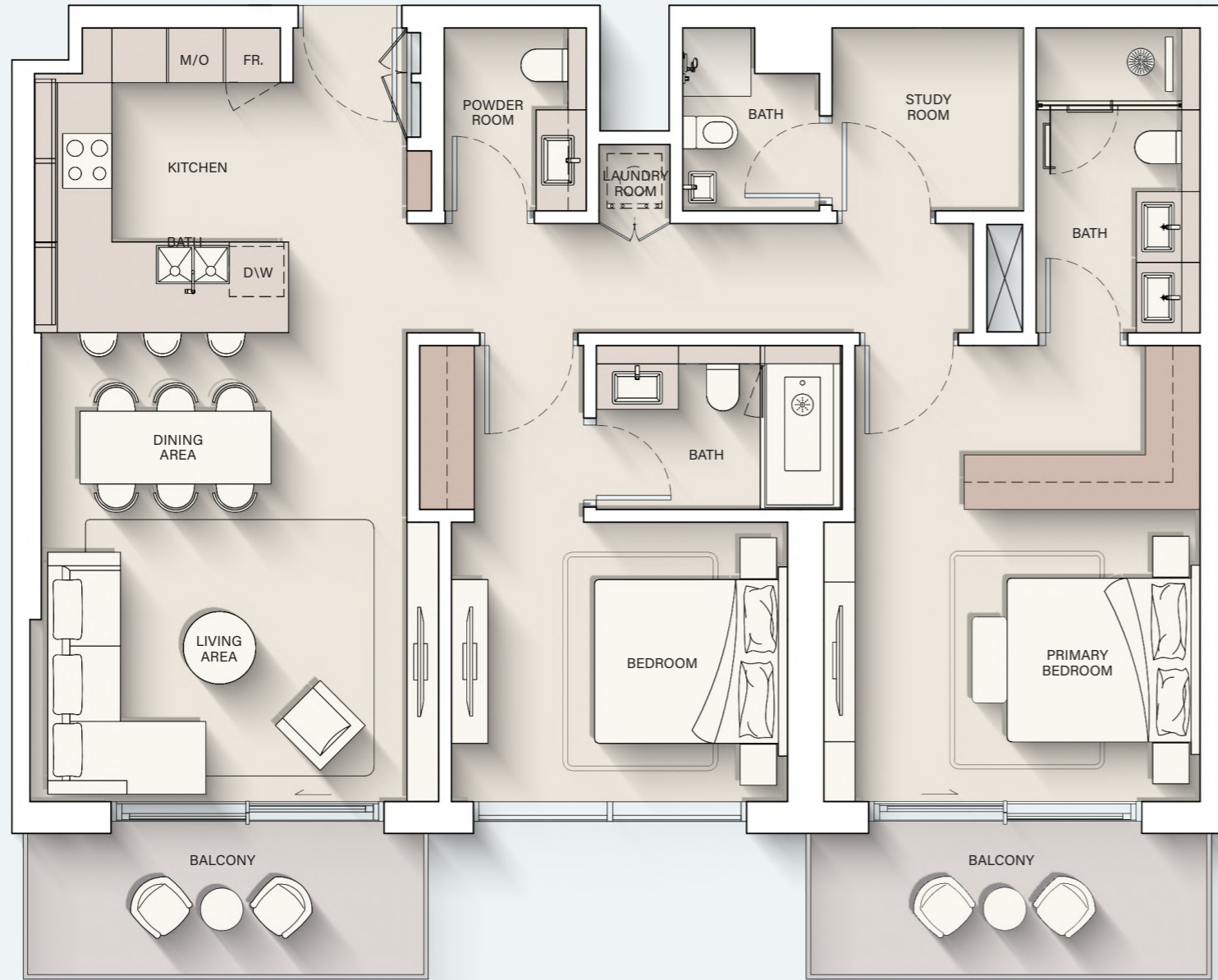
Internal Living Area : **1017.94 sq. ft**

Outdoor Living Area : **154.35 sq. ft**

Total Living Area : **1172.30 sq. ft**



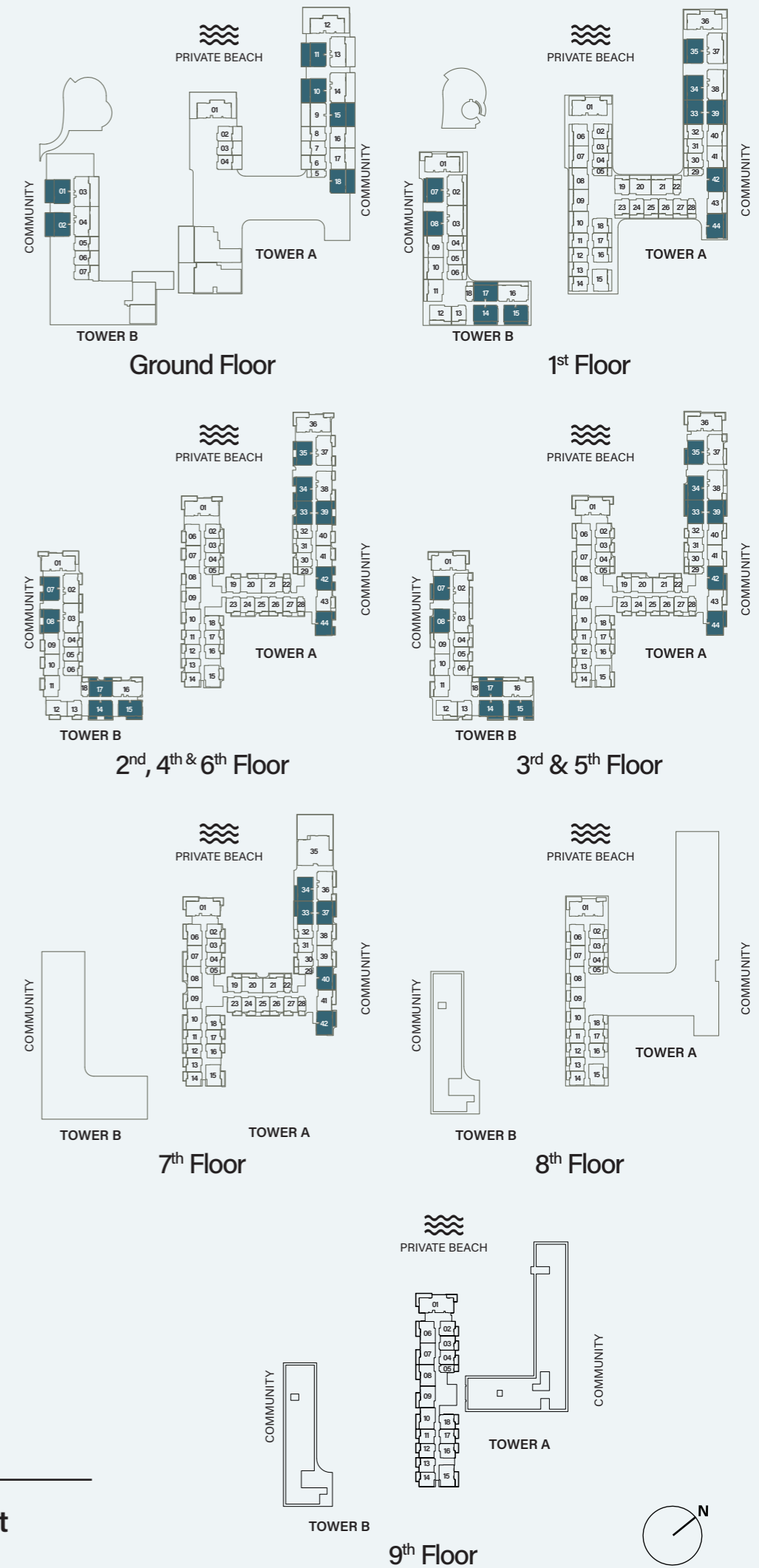
2 - BEDROOM + S



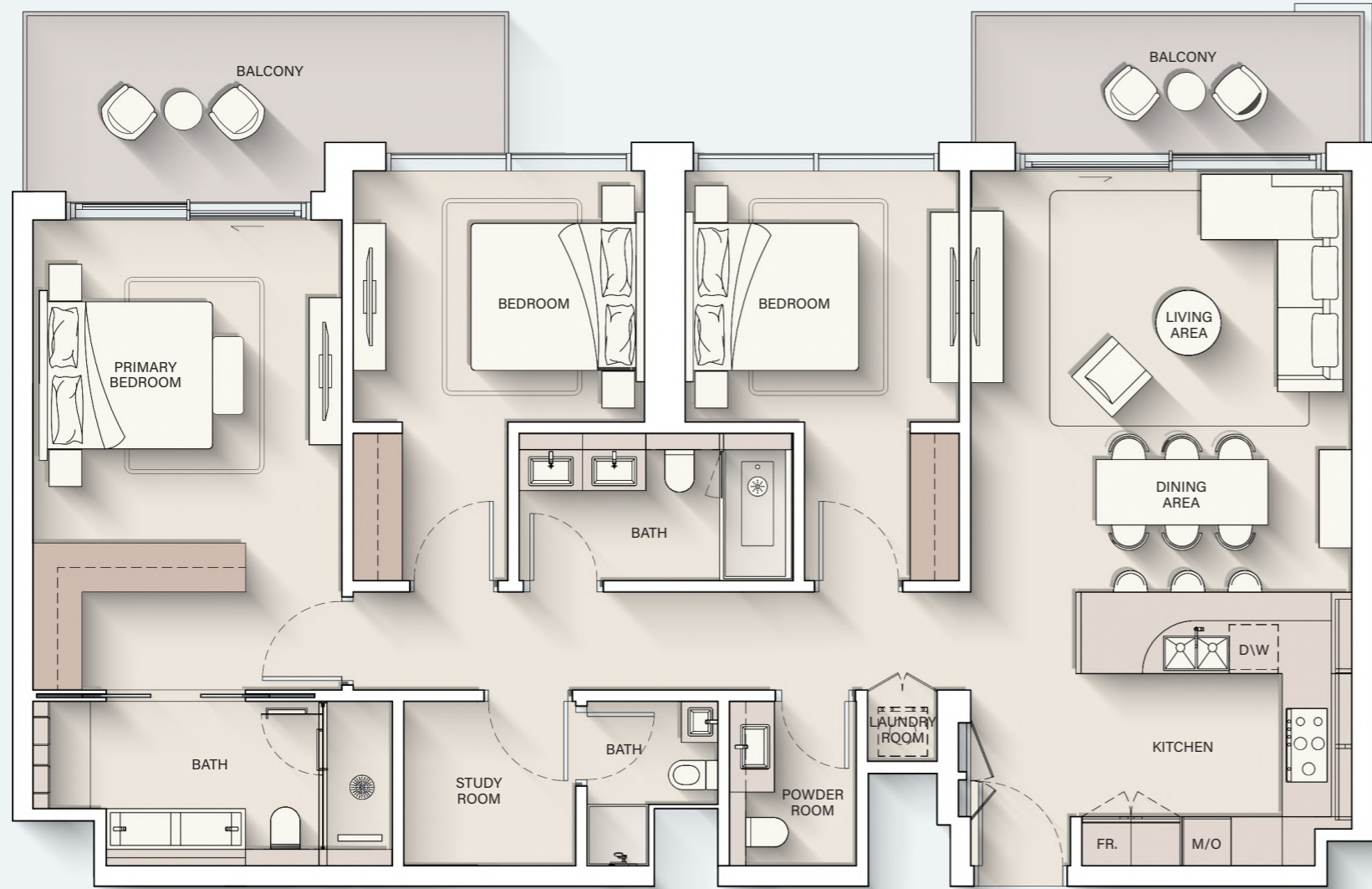
Internal Living Area : 1231.07 sq. ft

Outdoor Living Area : 168.13 sq. ft

Total Living Area : 1399.20 sq. ft



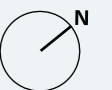
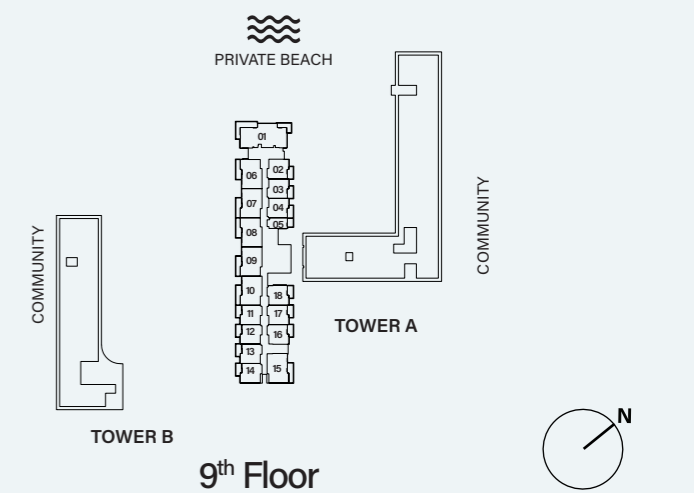
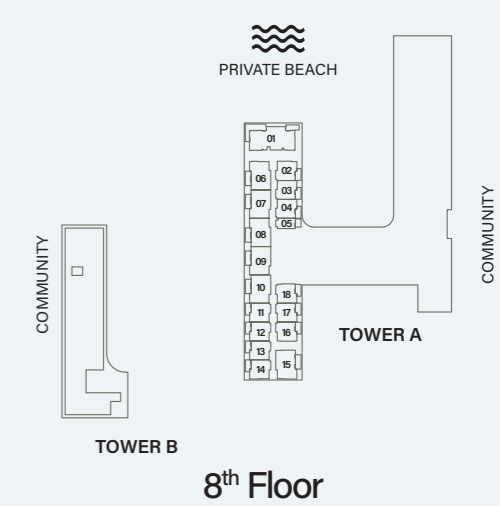
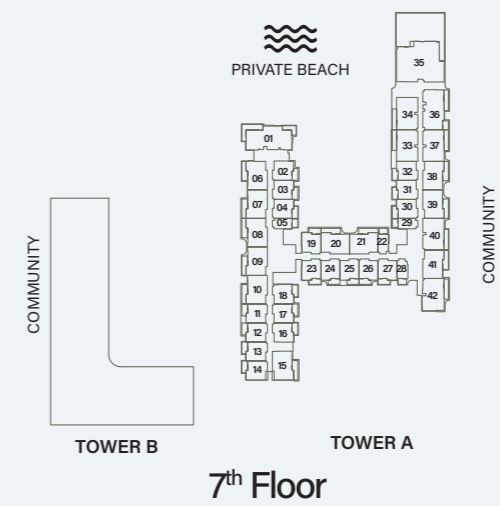
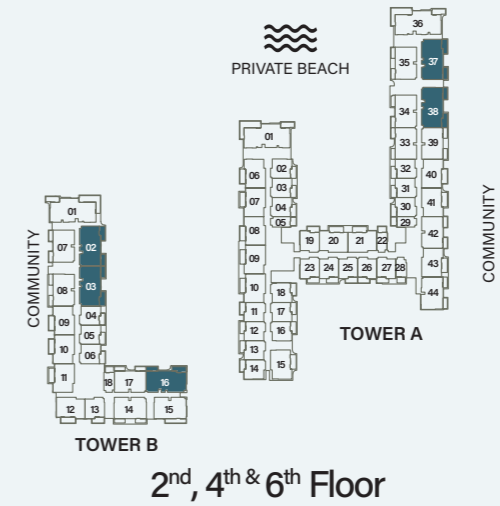
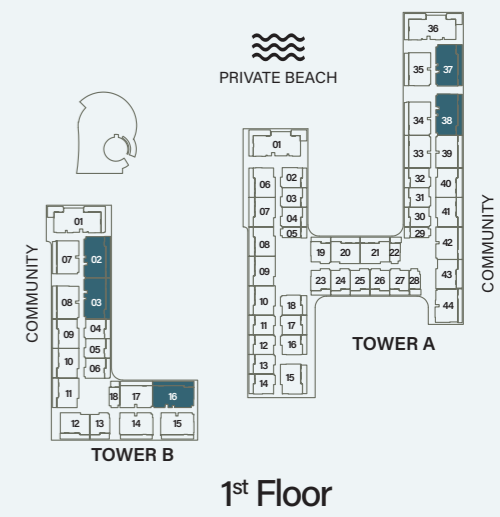
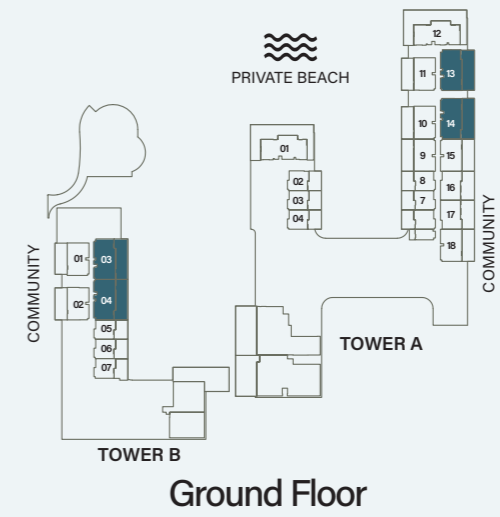
3 - BEDROOM



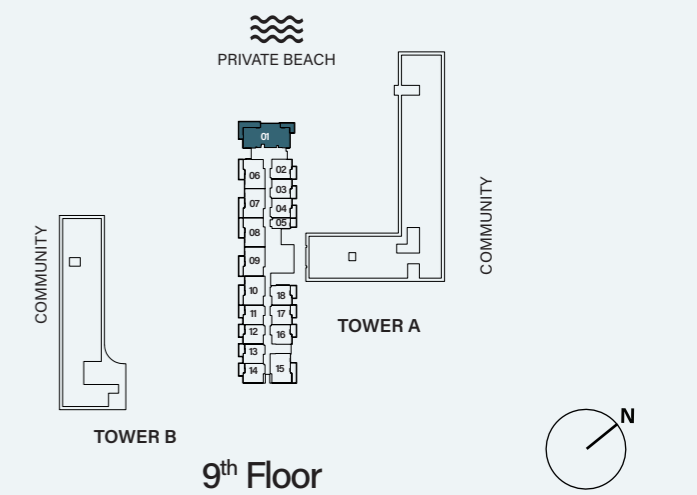
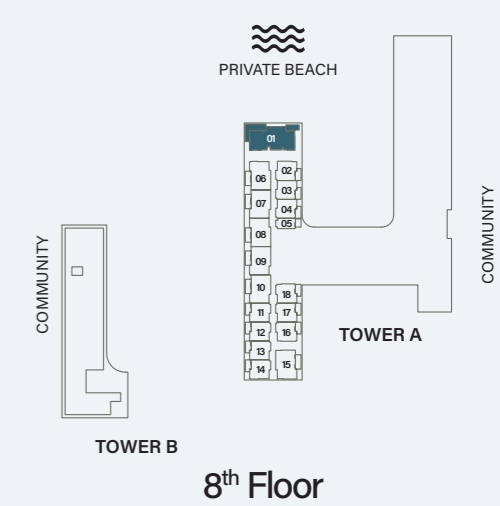
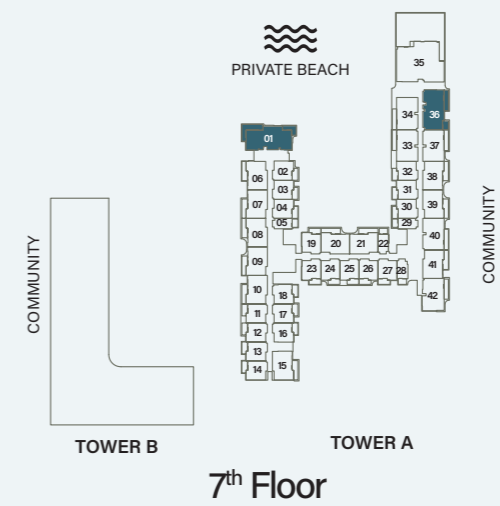
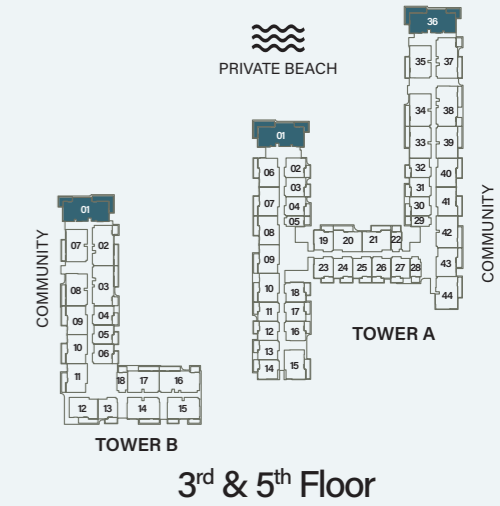
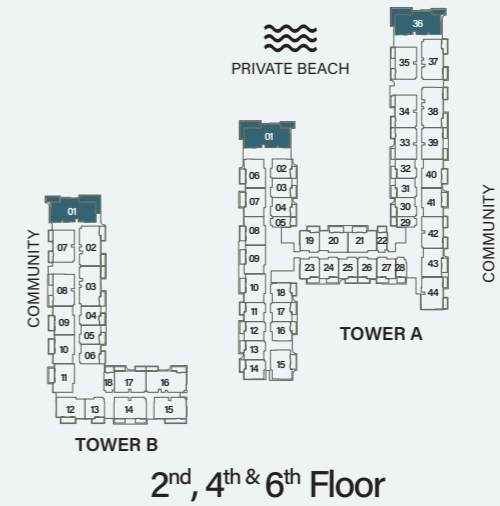
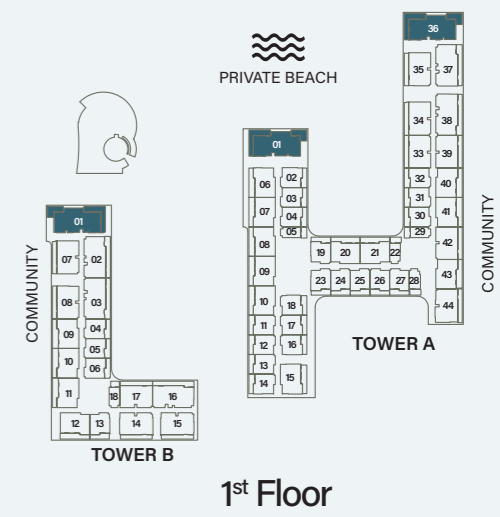
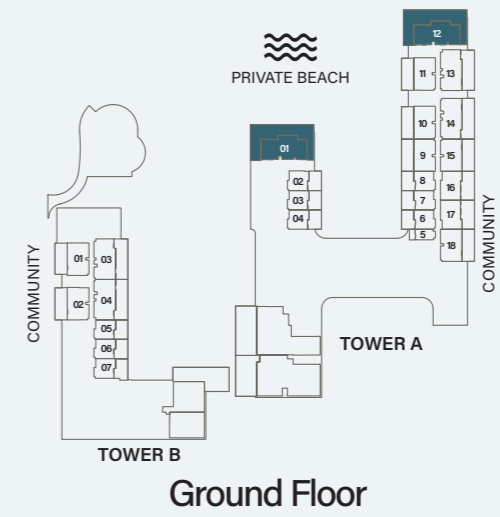
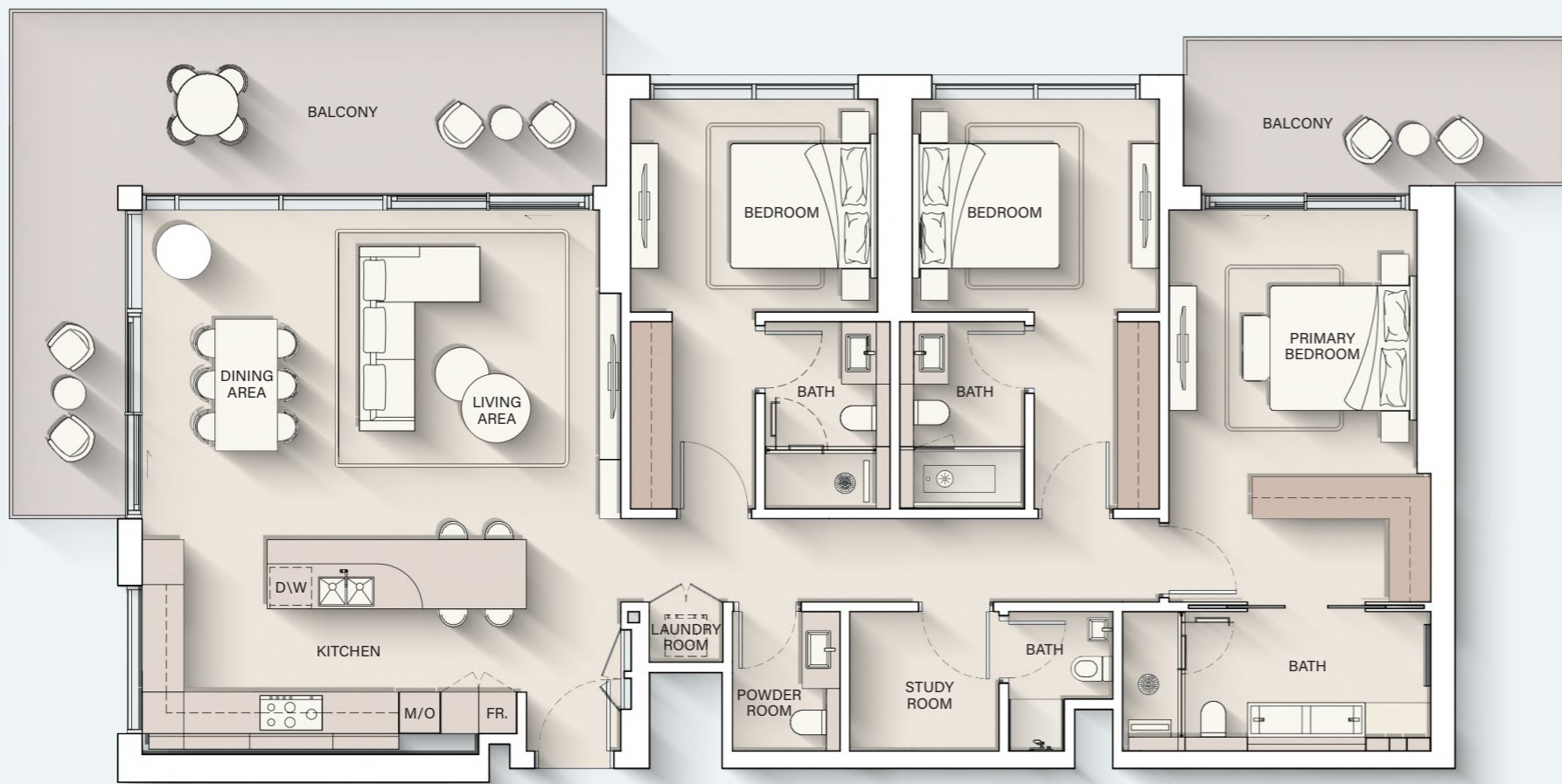
Internal Living Area : **1500.17 sq. ft**

Outdoor Living Area : **230.46 sq. ft**

Total Living Area : **1730.62 sq. ft**



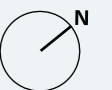
3 - BEDROOM DELUXE



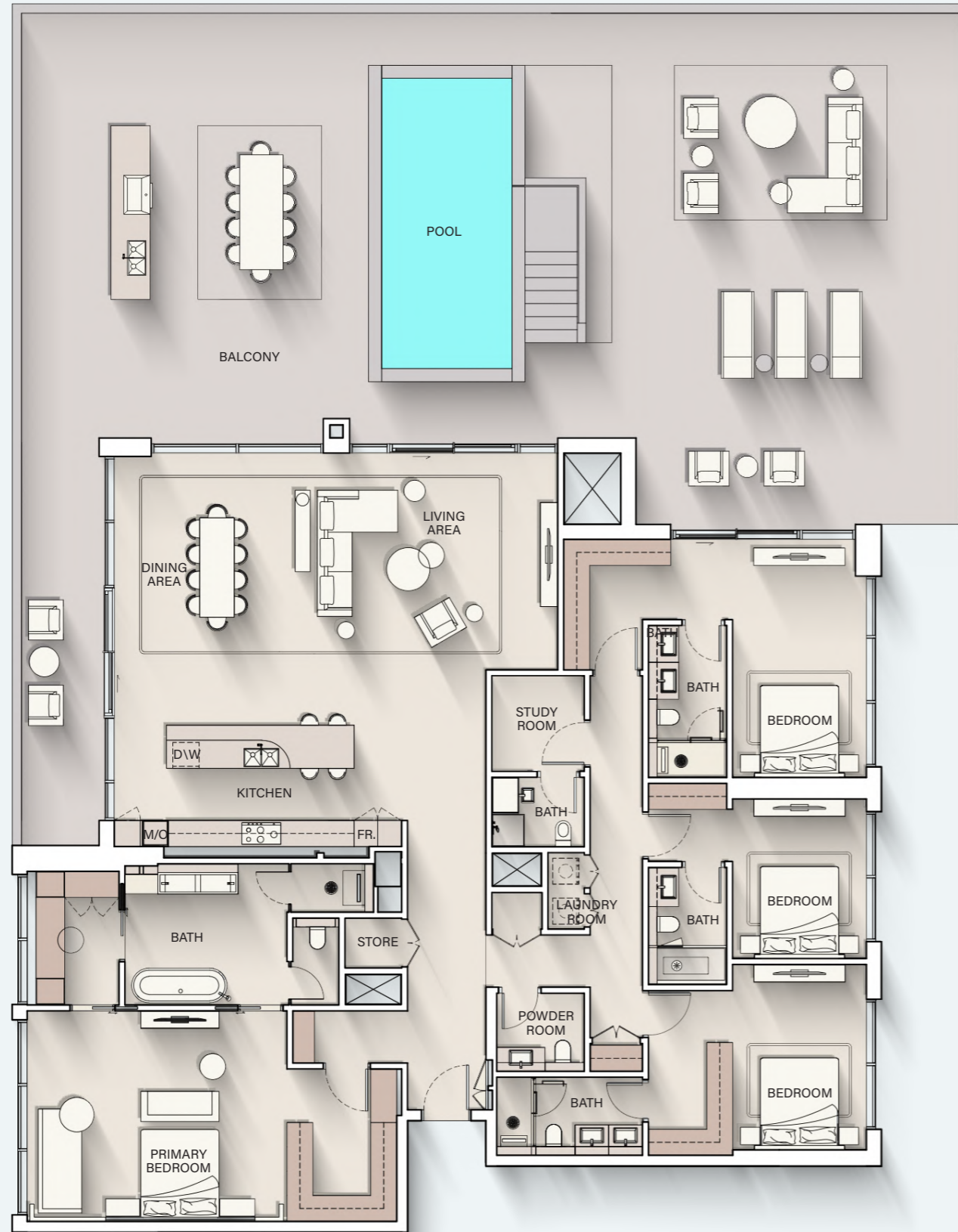
Internal Living Area : 1771.85 sq. ft

Outdoor Living Area : 477.06 sq. ft

Total Living Area : 2248.90 sq. ft



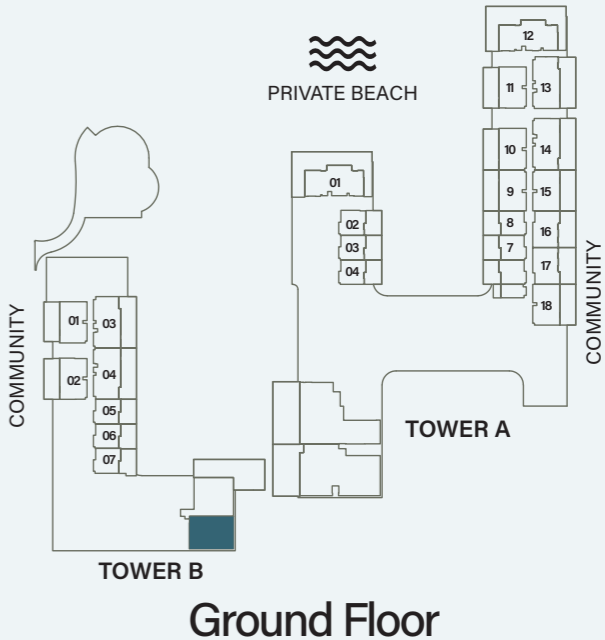
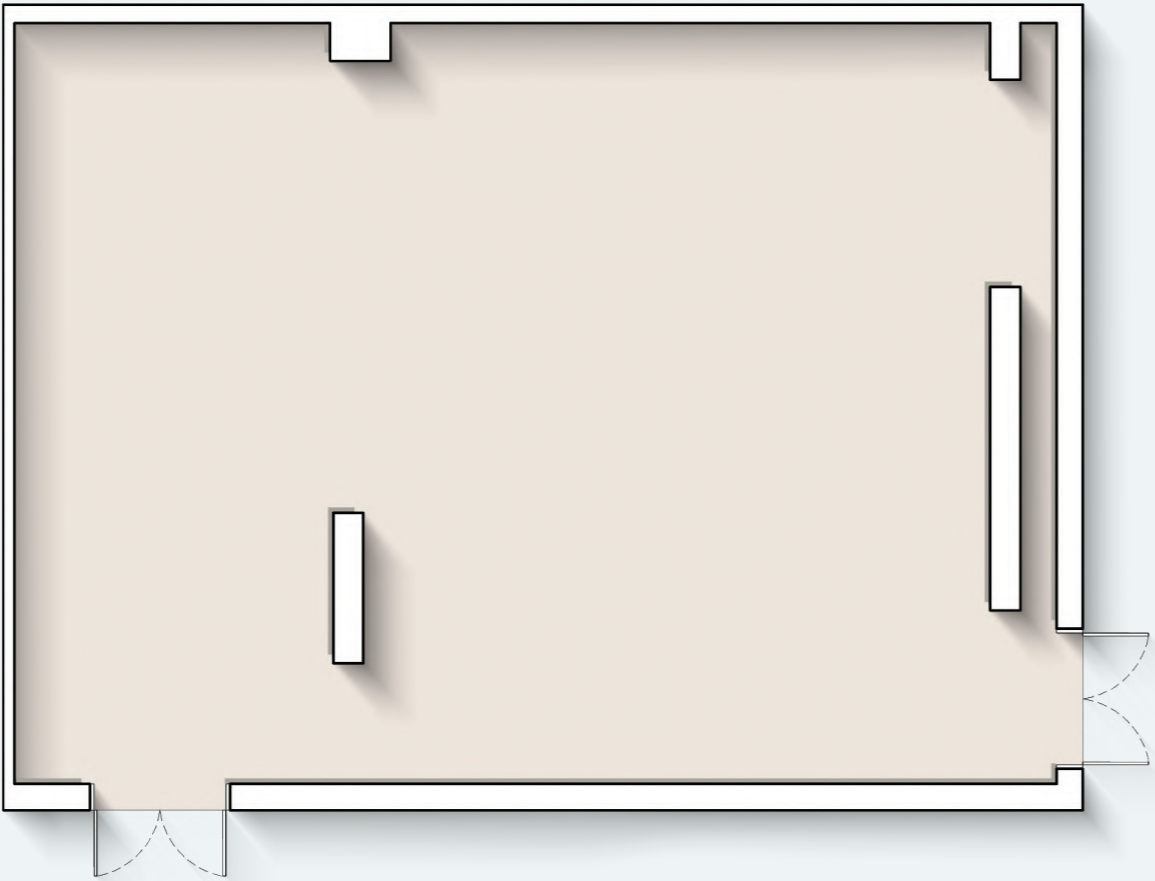
4 - BEDROOM PENTHOUSE



Internal Living Area : **3222.50 sq. ft** Outdoor Living Area : **2663.64 sq. ft** Total Living Area : **5886.14 sq. ft**



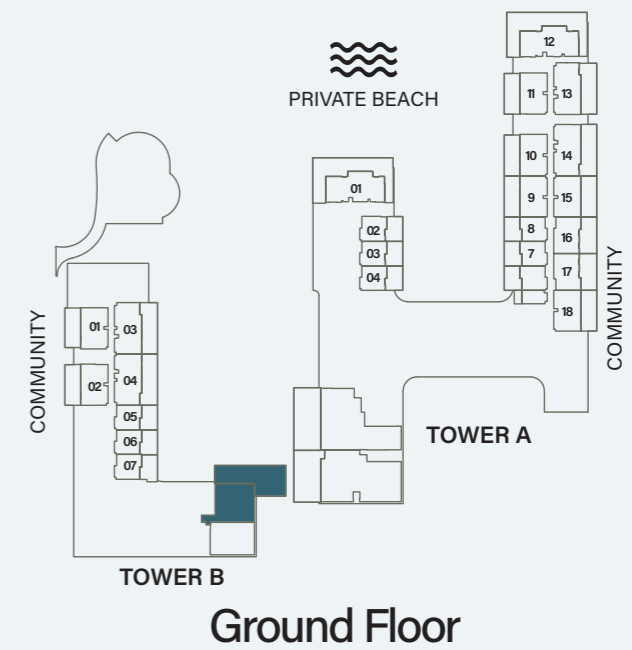
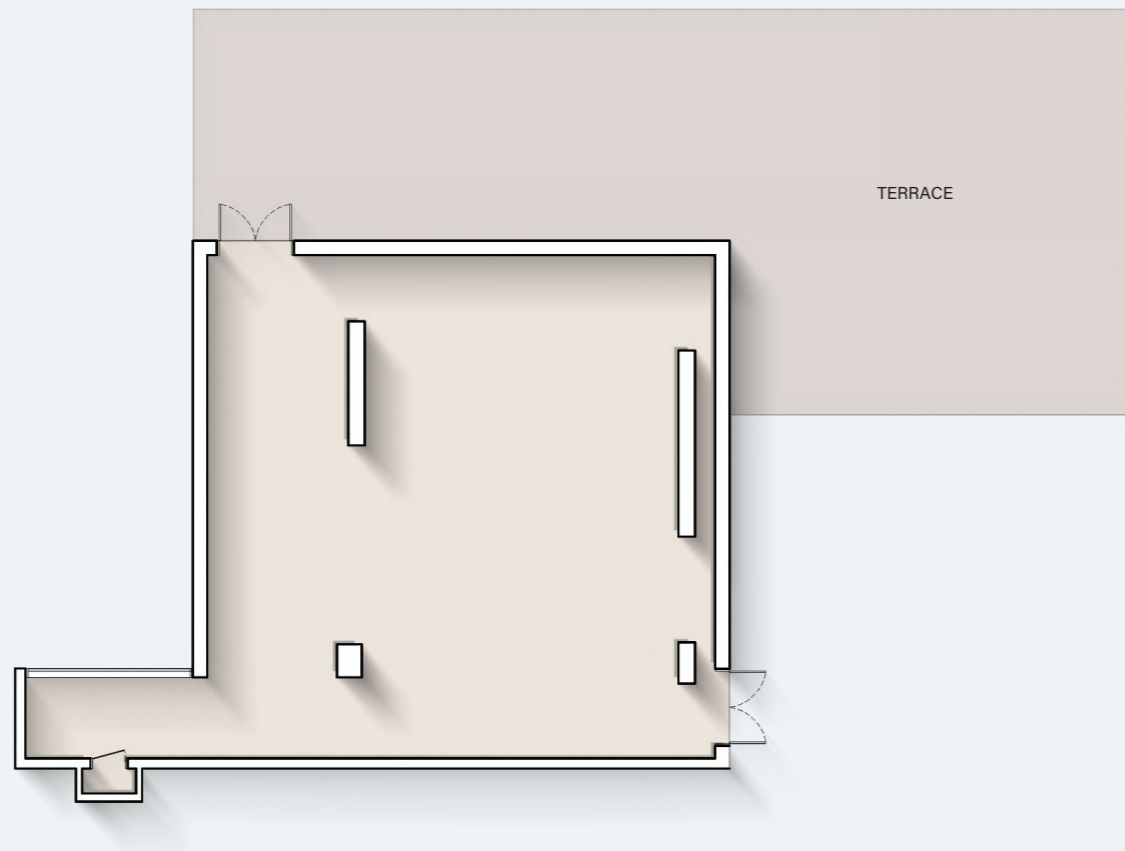
RETAIL - 1



Internal Living Area : 1585.20 sq. ft



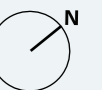
RETAIL - 2



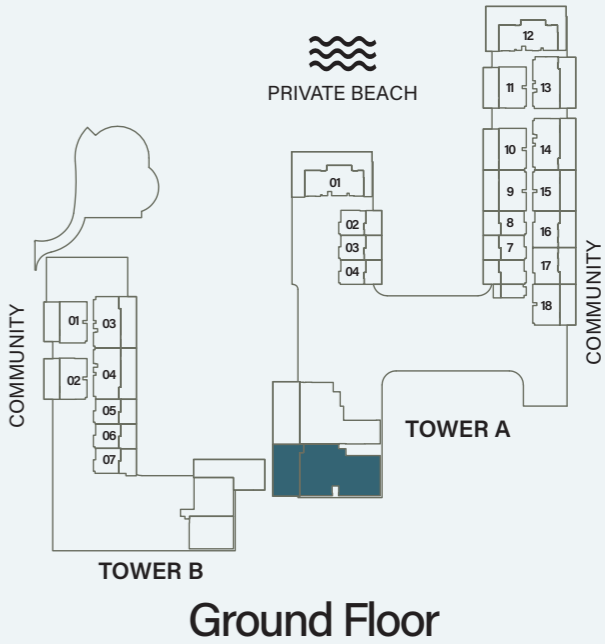
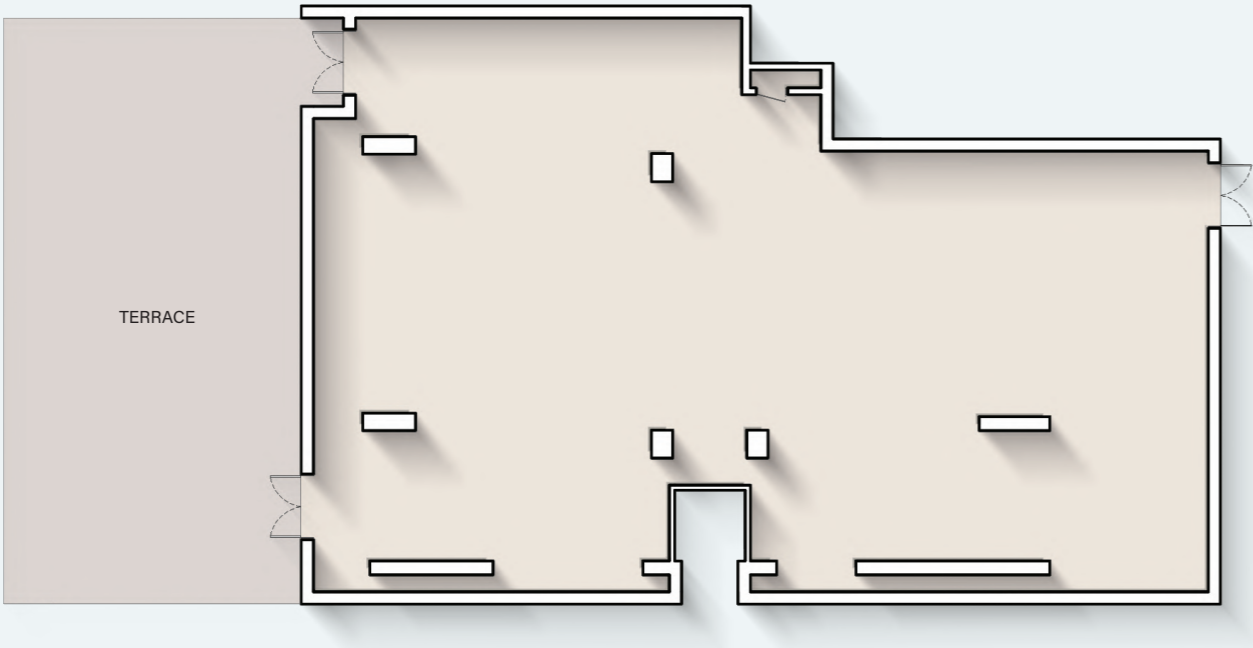
Internal Living Area : **1807.80 sq. ft**

Outdoor Living Area : **1854.41 sq. ft**

Total Living Area : **3662.21 sq. ft**



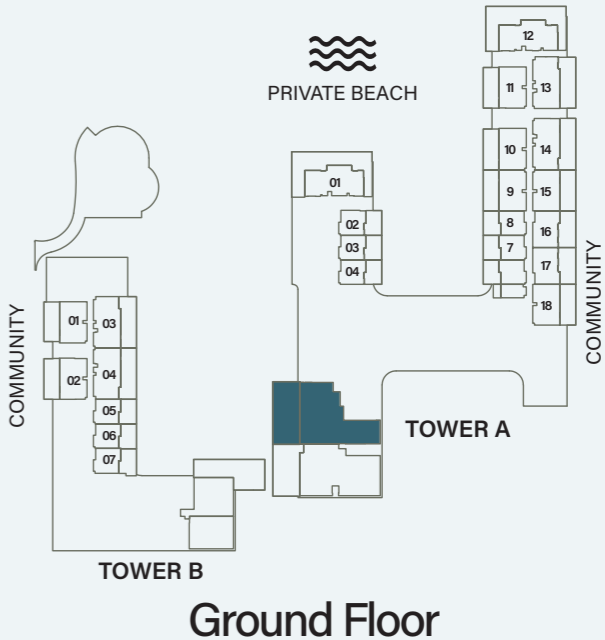
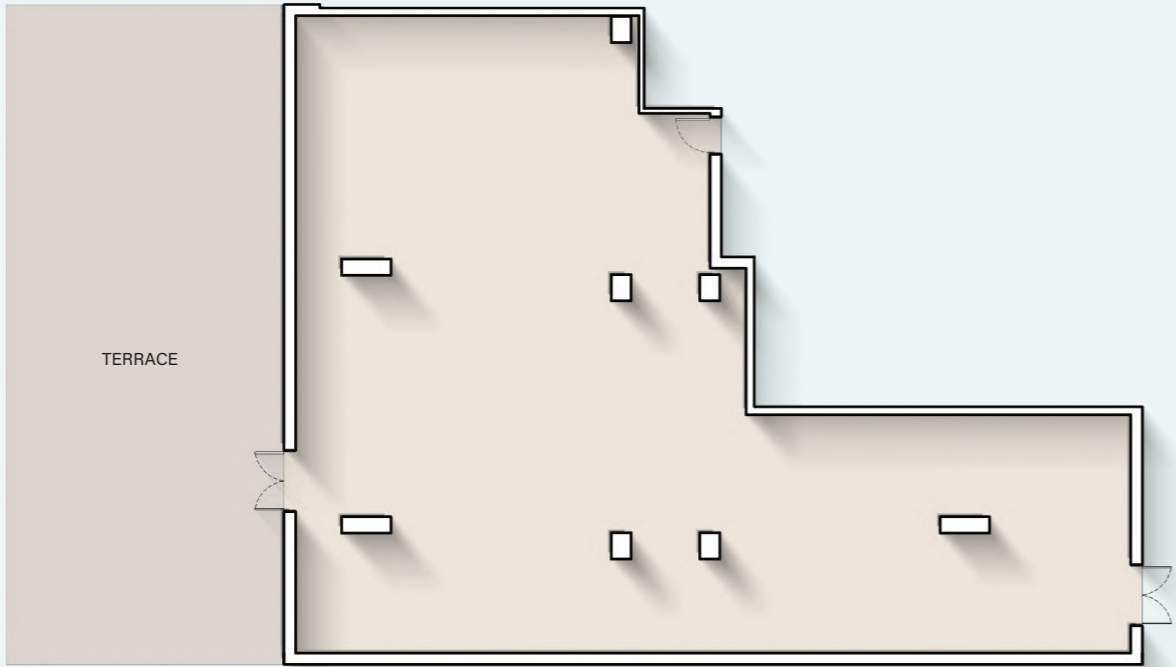
RETAIL - 3



Internal Living Area : **4016.55 sq. ft** Outdoor Living Area : **1578.42 sq. ft** Total Living Area : **5594.97 sq. ft**



RETAIL - 4



Internal Living Area : **3763.49 sq. ft** Outdoor Living Area : **1863.77 sq. ft** Total Living Area : **5627.26 sq. ft**






ELLINGTON
PROPERTIES

800 8288
info@ellingtongroup.com

ELLINGTONPROPERTIES.AE

The renderings and visualizations contained in this brochure are provided for illustrative and marketing purposes. While the information provided is believed to be accurate and reliable at the time of printing, only the information contained in the final Sales and Purchase Agreement will have any legal effect.