

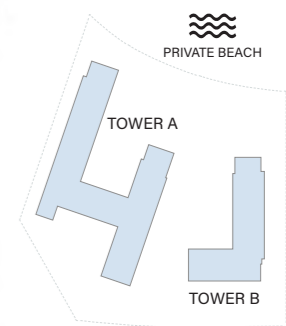


ELLINGTON
PROPERTIES



ELLINGTON COVE I

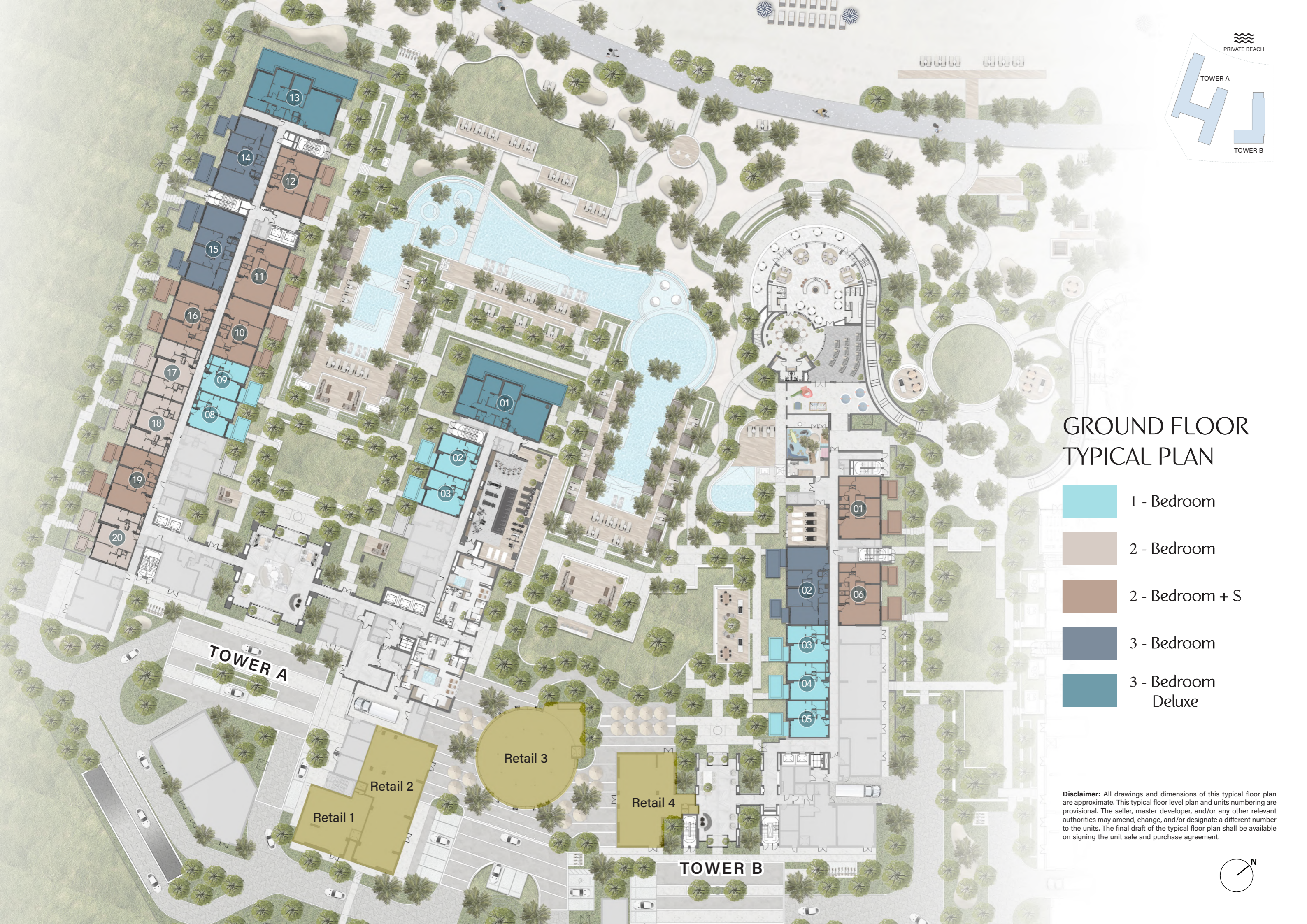
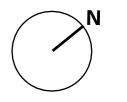
FLOOR PLAN

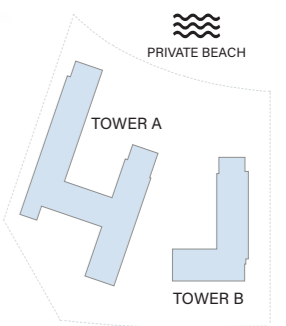


GROUND FLOOR TYPICAL PLAN

- 1 - Bedroom
- 2 - Bedroom
- 2 - Bedroom + S
- 3 - Bedroom
- 3 - Bedroom Deluxe

Disclaimer: All drawings and dimensions of this typical floor plan are approximate. This typical floor level plan and units numbering are provisional. The seller, master developer, and/or any other relevant authorities may amend, change, and/or designate a different number to the units. The final draft of the typical floor plan shall be available on signing the unit sale and purchase agreement.

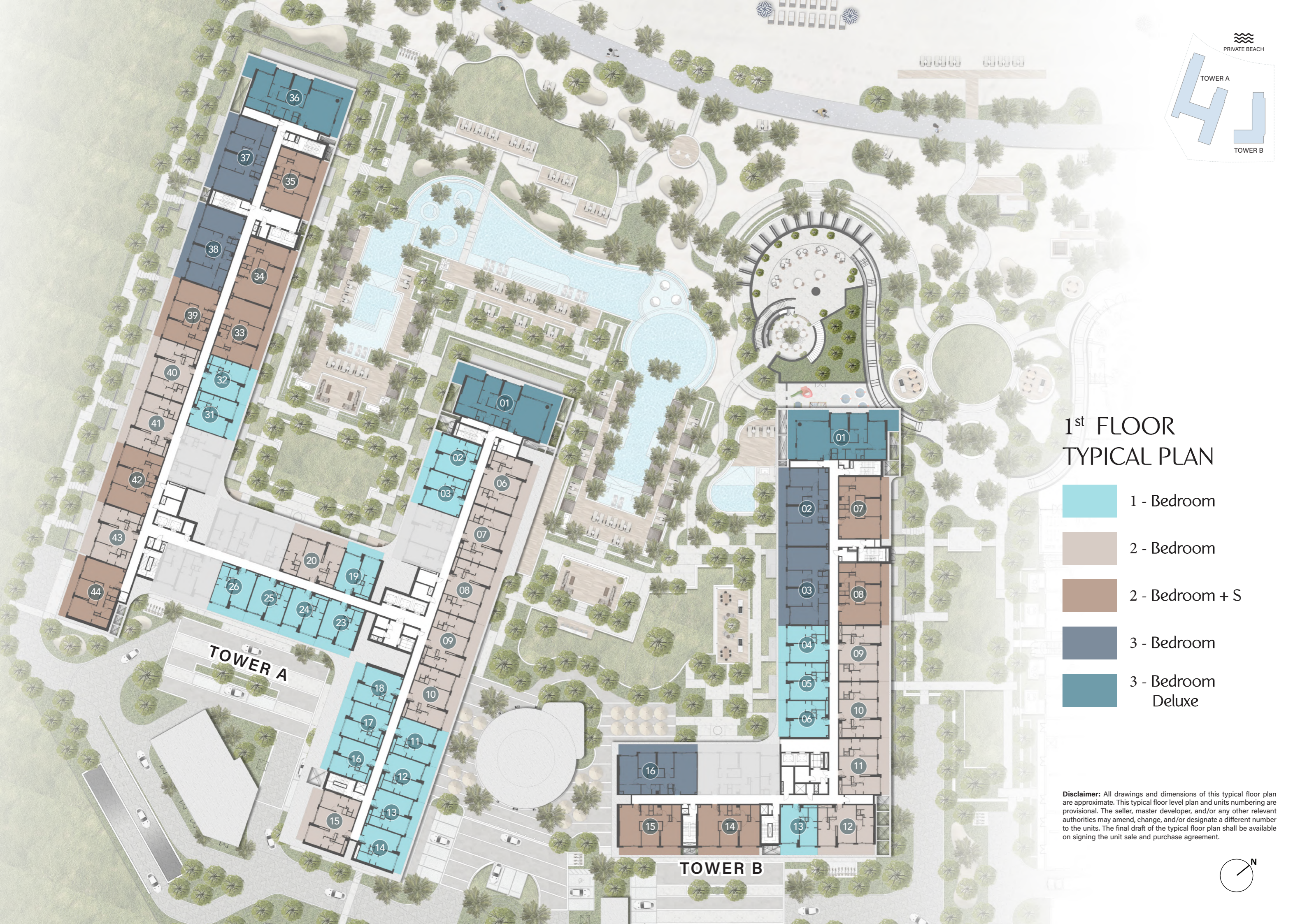
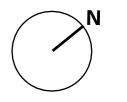


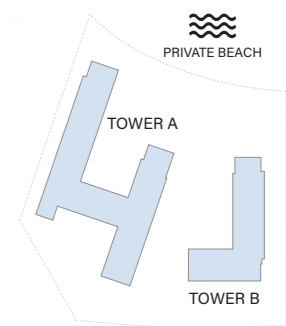


1st FLOOR TYPICAL PLAN

- 1 - Bedroom
- 2 - Bedroom
- 2 - Bedroom + S
- 3 - Bedroom
- 3 - Bedroom
Deluxe

Disclaimer: All drawings and dimensions of this typical floor plan are approximate. This typical floor level plan and units numbering are provisional. The seller, master developer, and/or any other relevant authorities may amend, change, and/or designate a different number to the units. The final draft of the typical floor plan shall be available on signing the unit sale and purchase agreement.

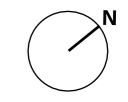


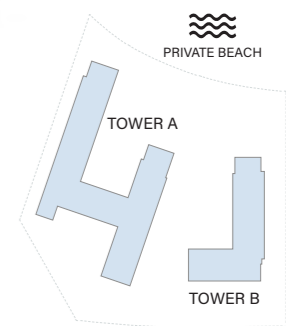


2nd, 4th & 6th FLOOR TYPICAL PLAN

- 1 - Bedroom
- 2 - Bedroom
- 2 - Bedroom + S
- 3 - Bedroom
- 3 - Bedroom Deluxe

Disclaimer: All drawings and dimensions of this typical floor plan are approximate. This typical floor level plan and units numbering are provisional. The seller, master developer, and/or any other relevant authorities may amend, change, and/or designate a different number to the units. The final draft of the typical floor plan shall be available on signing the unit sale and purchase agreement.

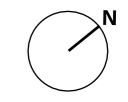


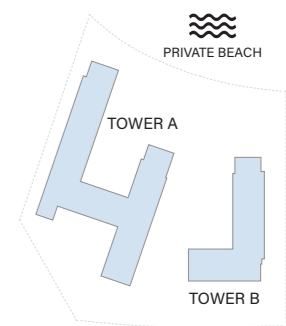


3th & 5th FLOOR TYPICAL PLAN

- 1 - Bedroom
- 2 - Bedroom
- 2 - Bedroom + S
- 3 - Bedroom
- 3 - Bedroom
Deluxe

Disclaimer: All drawings and dimensions of this typical floor plan are approximate. This typical floor level plan and units numbering are provisional. The seller, master developer, and/or any other relevant authorities may amend, change, and/or designate a different number to the units. The final draft of the typical floor plan shall be available on signing the unit sale and purchase agreement.

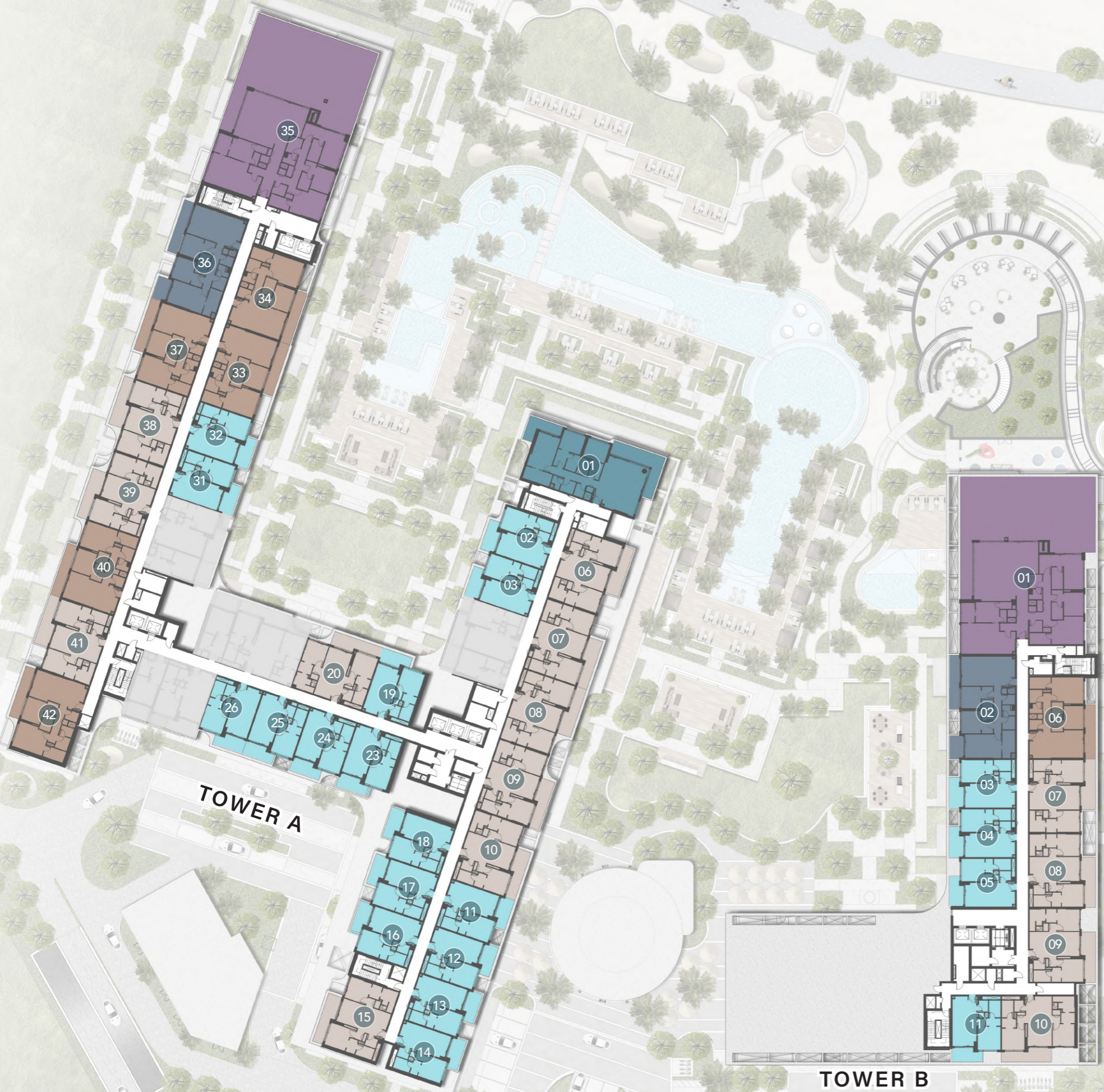
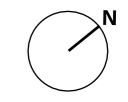


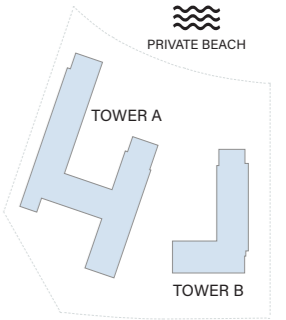


7th FLOOR TYPICAL PLAN



- 1 - Bedroom
- 2 - Bedroom
- 2 - Bedroom + S
- 3 - Bedroom
- 3 - Bedroom Deluxe
- 4 - Bedroom Penthouse

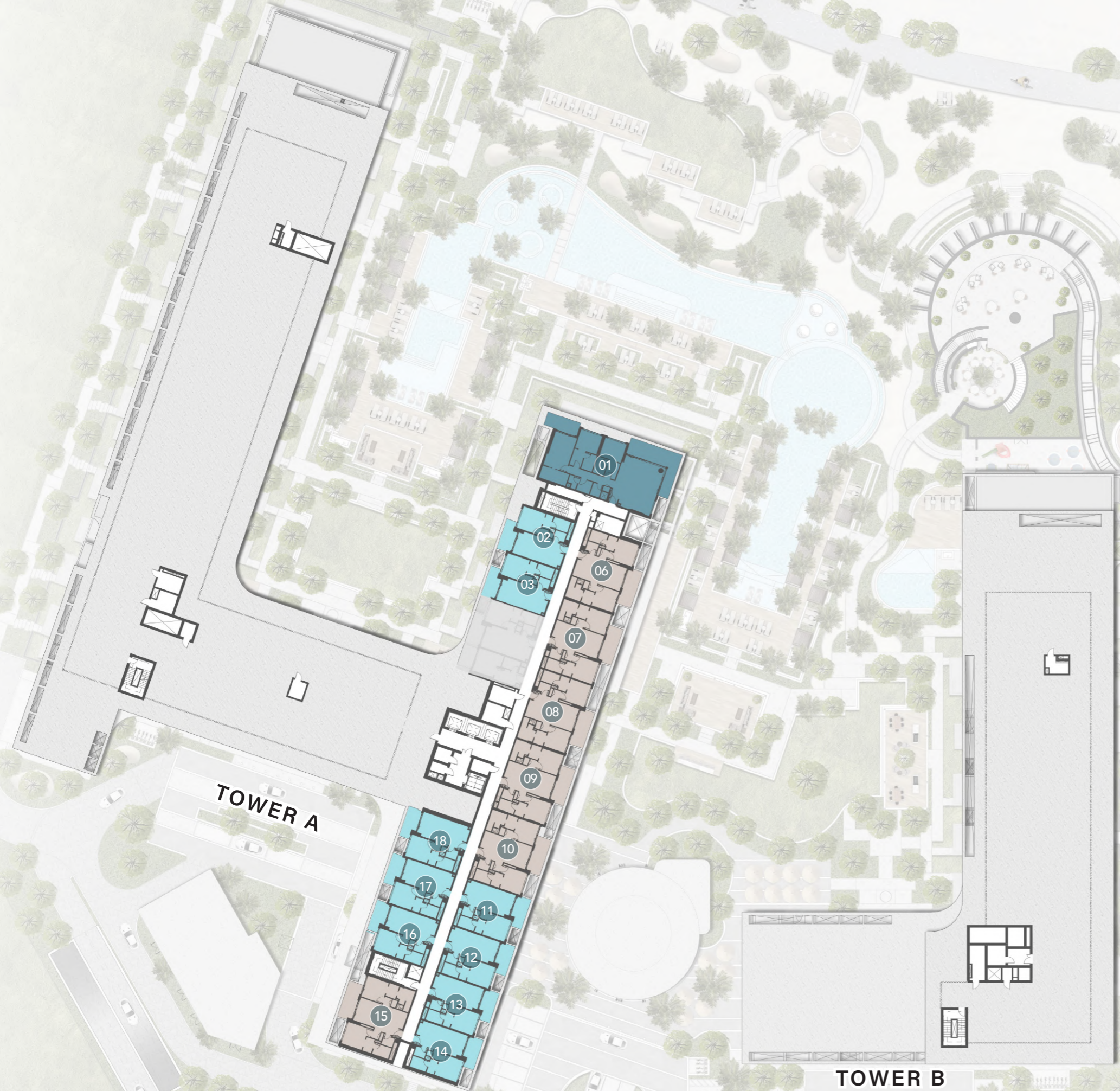
Disclaimer: All drawings and dimensions of this typical floor plan are approximate. This typical floor level plan and units numbering are provisional. The seller, master developer, and/or any other relevant authorities may amend, change, and/or designate a different number to the units. The final draft of the typical floor plan shall be available on signing the unit sale and purchase agreement.



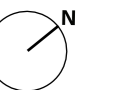


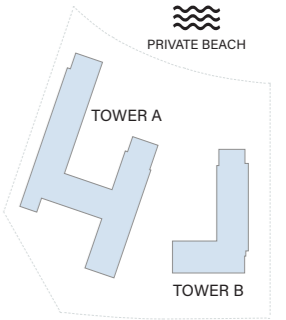
8th FLOOR TYPICAL PLAN

-  1 - Bedroom
-  2 - Bedroom
-  3 - Bedroom
Deluxe



Disclaimer: All drawings and dimensions of this typical floor plan are approximate. This typical floor level plan and units numbering are provisional. The seller, master developer, and/or any other relevant authorities may amend, change, and/or designate a different number to the units. The final draft of the typical floor plan shall be available on signing the unit sale and purchase agreement.

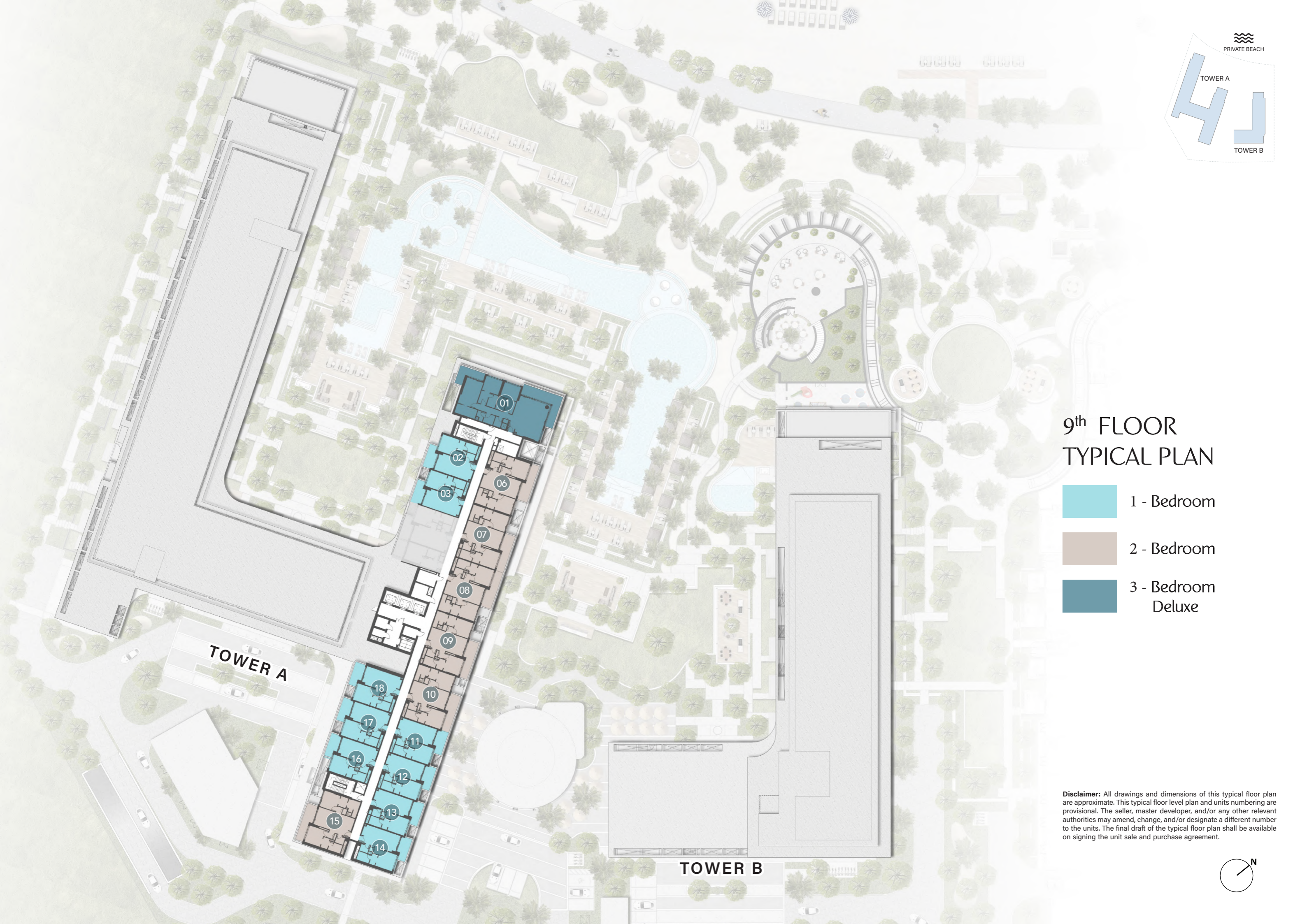
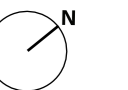




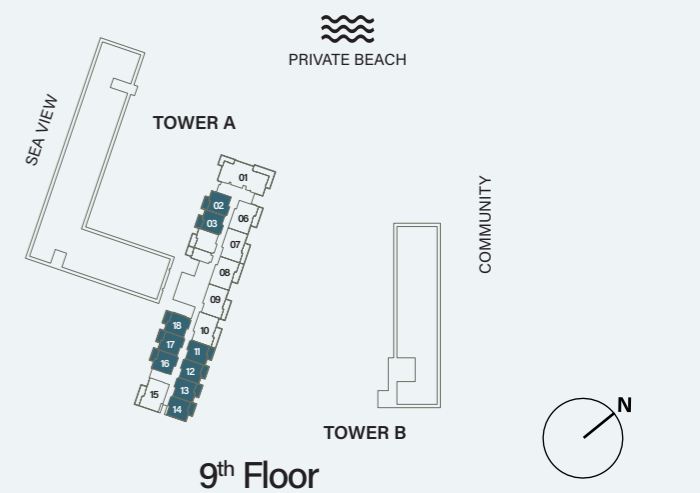
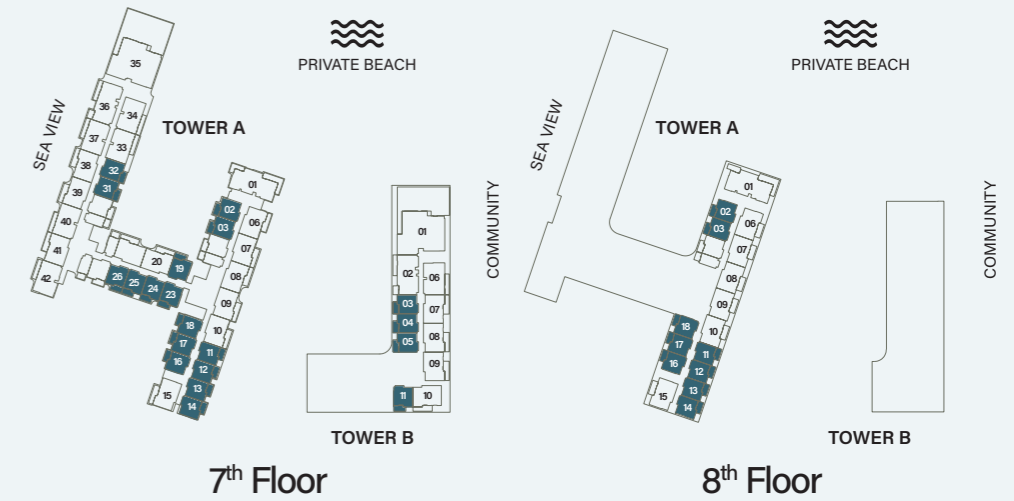
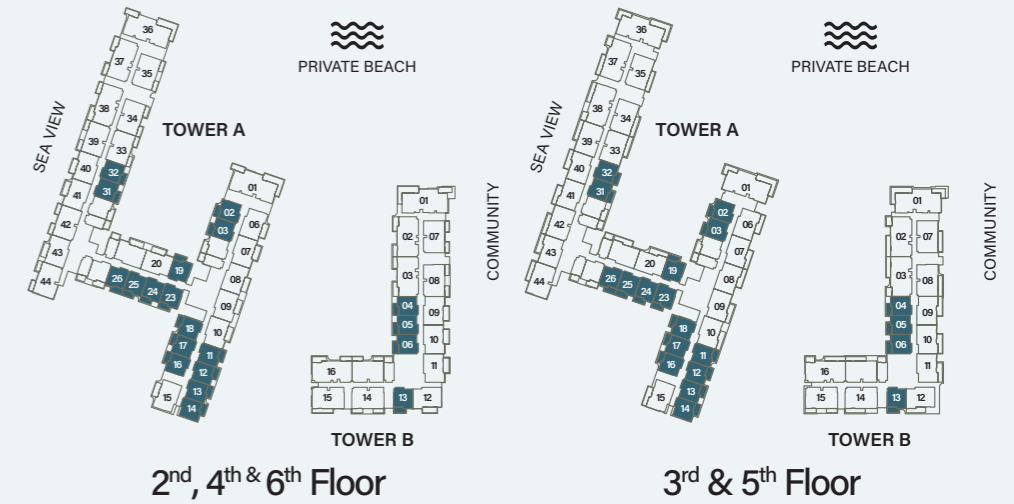
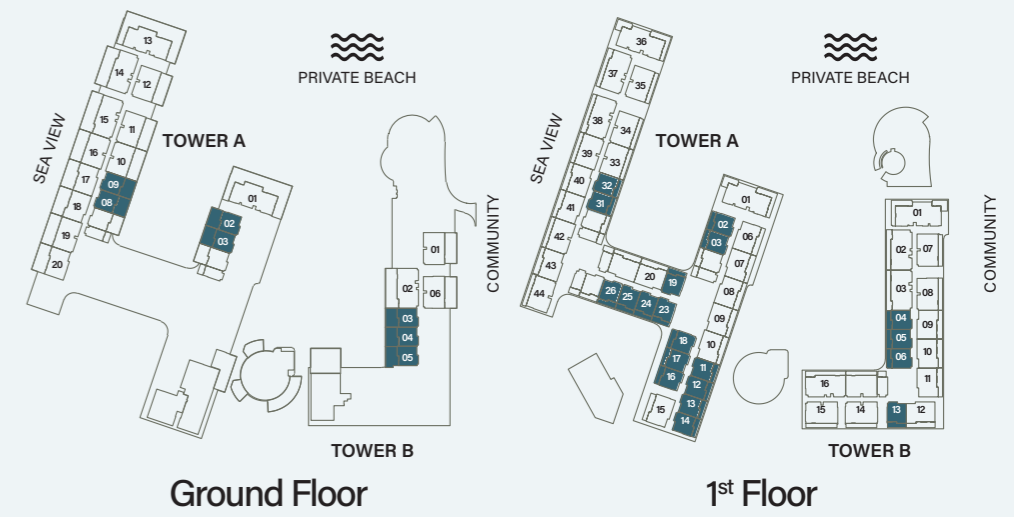
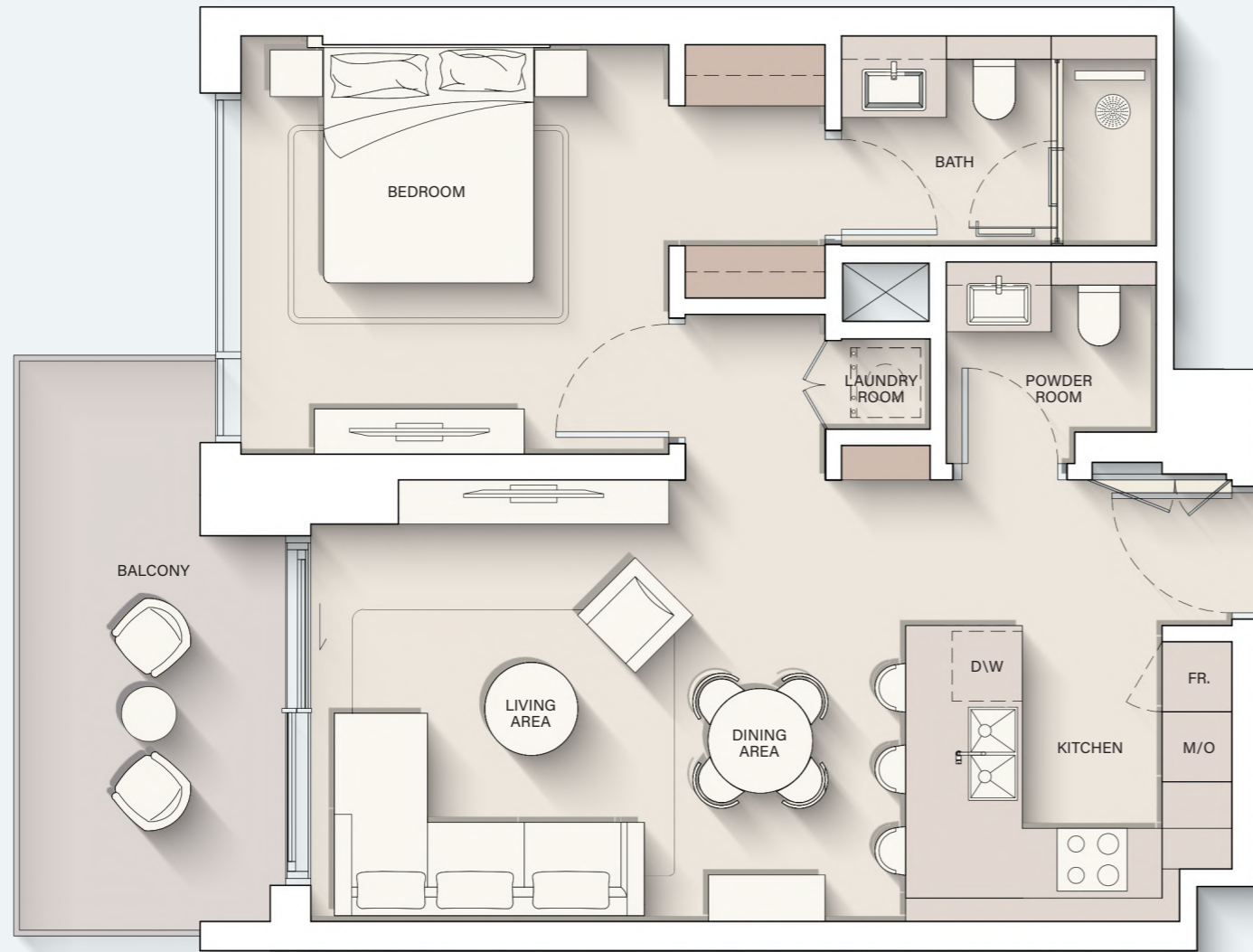
9th FLOOR TYPICAL PLAN

-  1 - Bedroom
-  2 - Bedroom
-  3 - Bedroom
Deluxe

Disclaimer: All drawings and dimensions of this typical floor plan are approximate. This typical floor level plan and units numbering are provisional. The seller, master developer, and/or any other relevant authorities may amend, change, and/or designate a different number to the units. The final draft of the typical floor plan shall be available on signing the unit sale and purchase agreement.



1 - BEDROOM

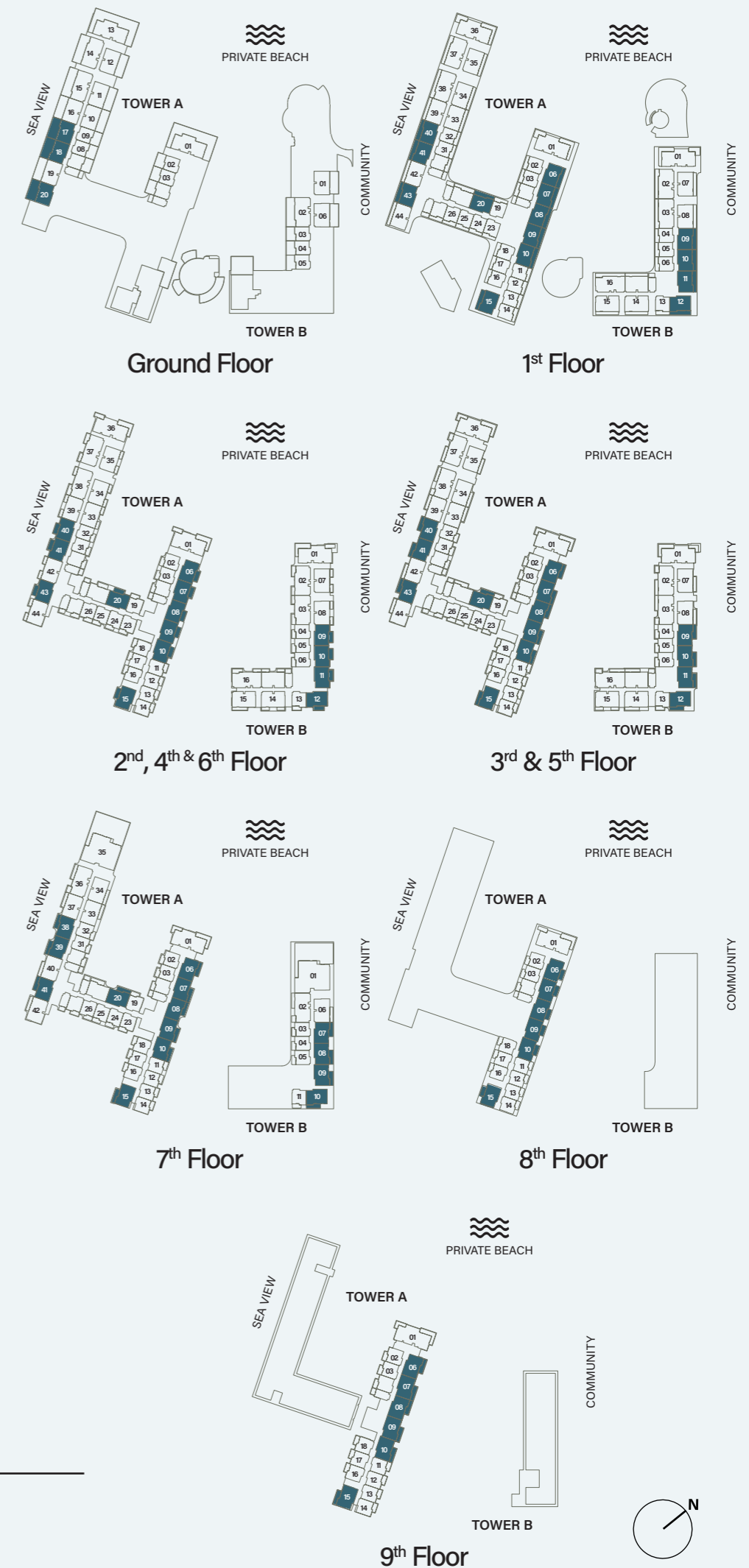


Internal Living Area : **692.44 sq. ft**

Outdoor Living Area : **123.68 sq. ft**

Total Living Area : **816.12 sq. ft**

2 - BEDROOM

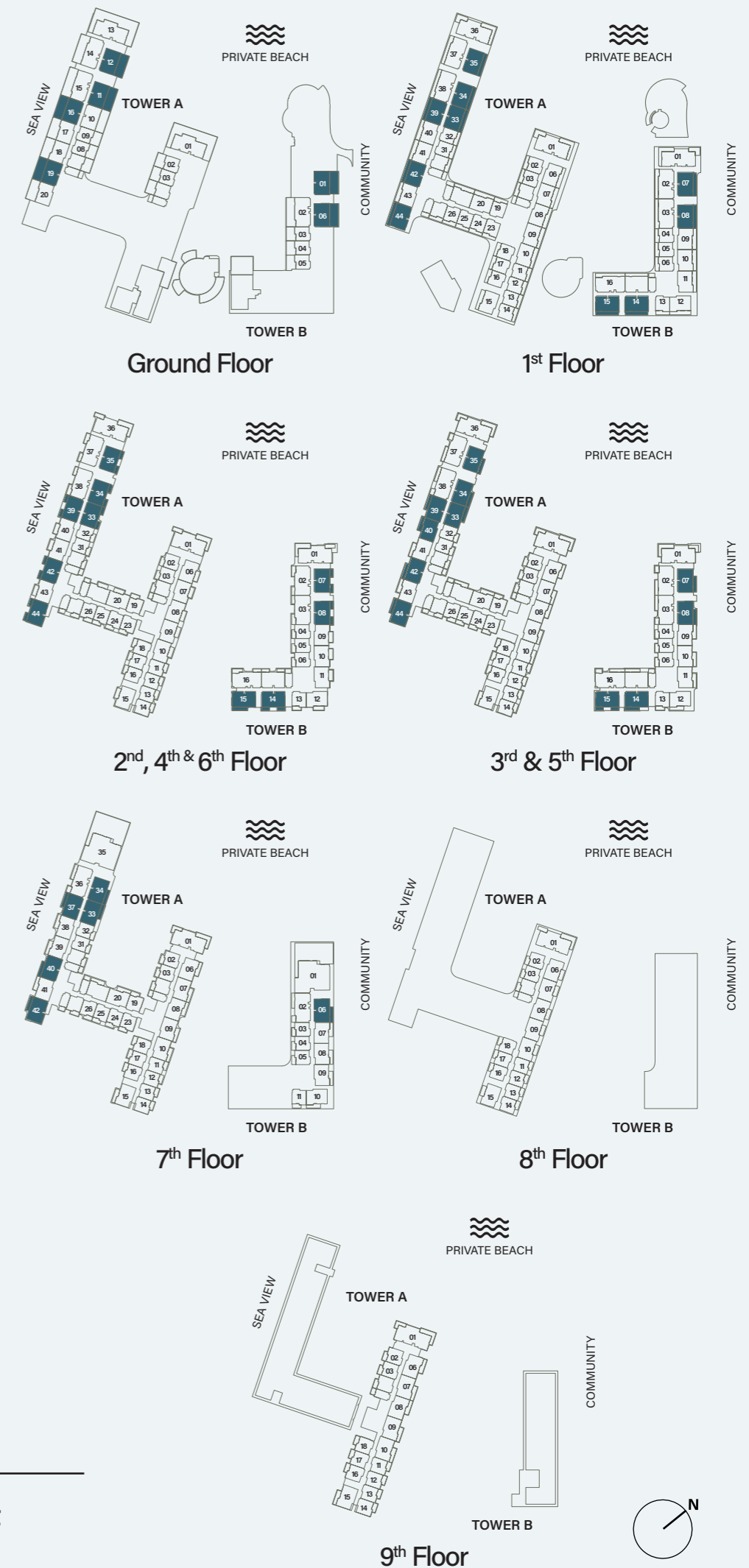
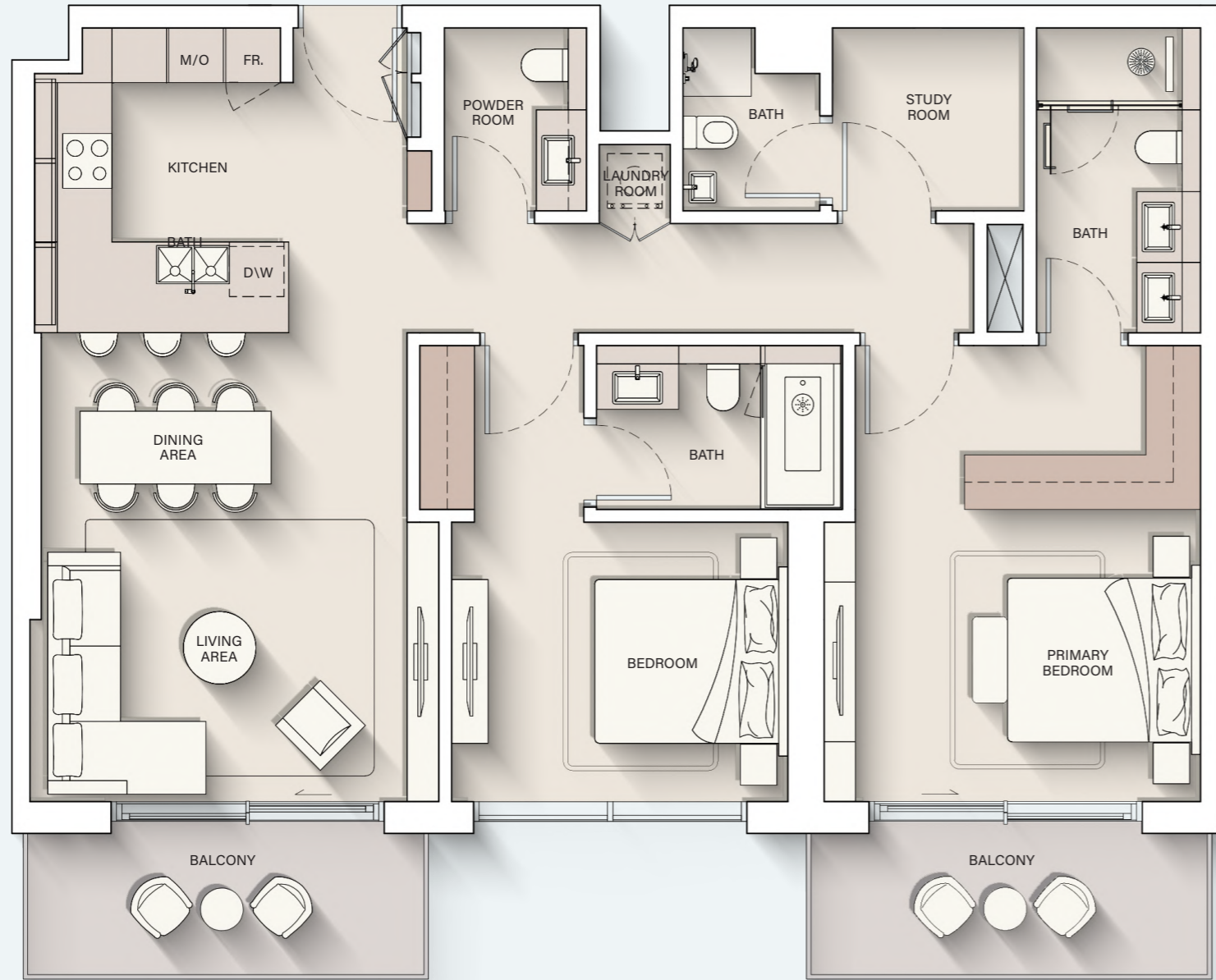


Internal Living Area : **1017.94 sq. ft**

Outdoor Living Area : **154.35 sq. ft**

Total Living Area : **1172.30 sq. ft**

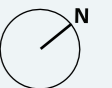
2 - BEDROOM + S



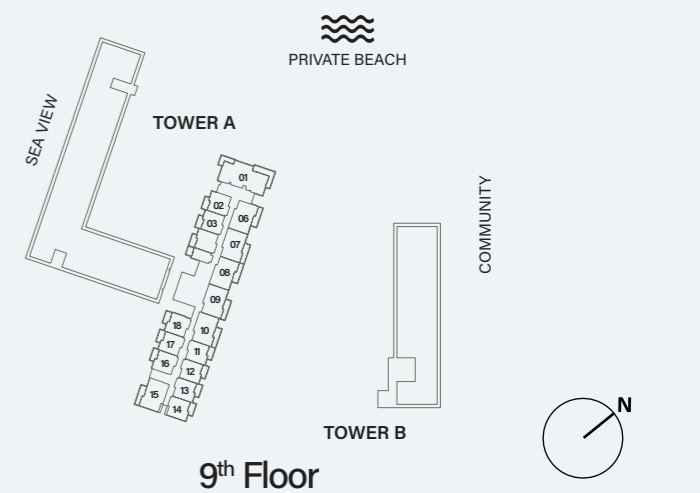
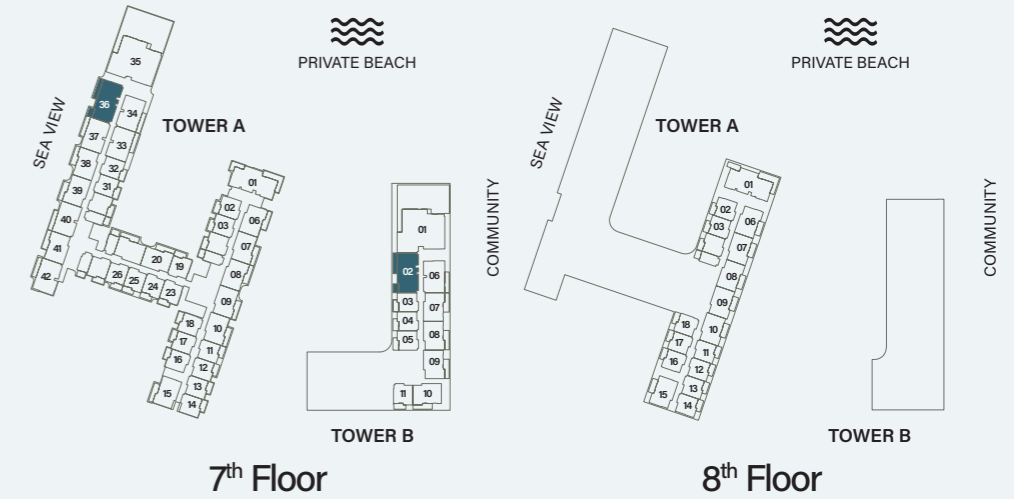
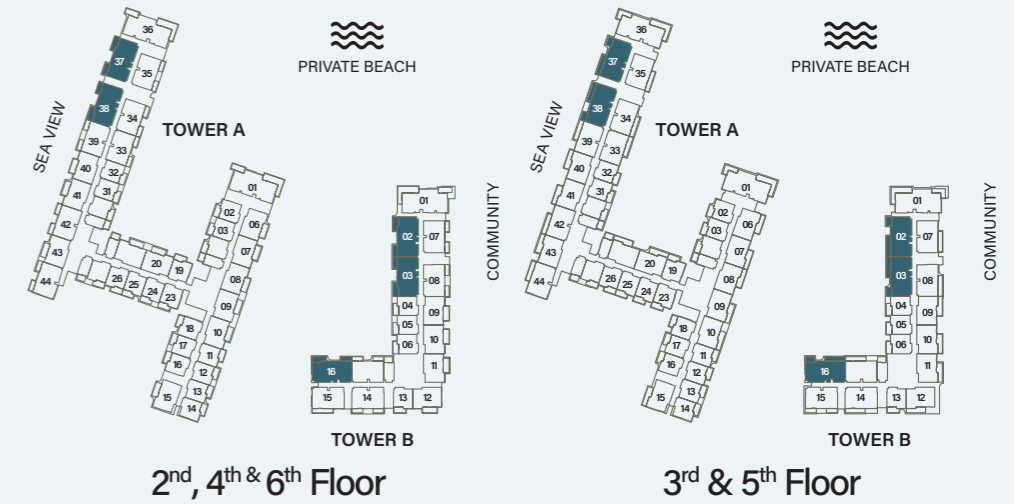
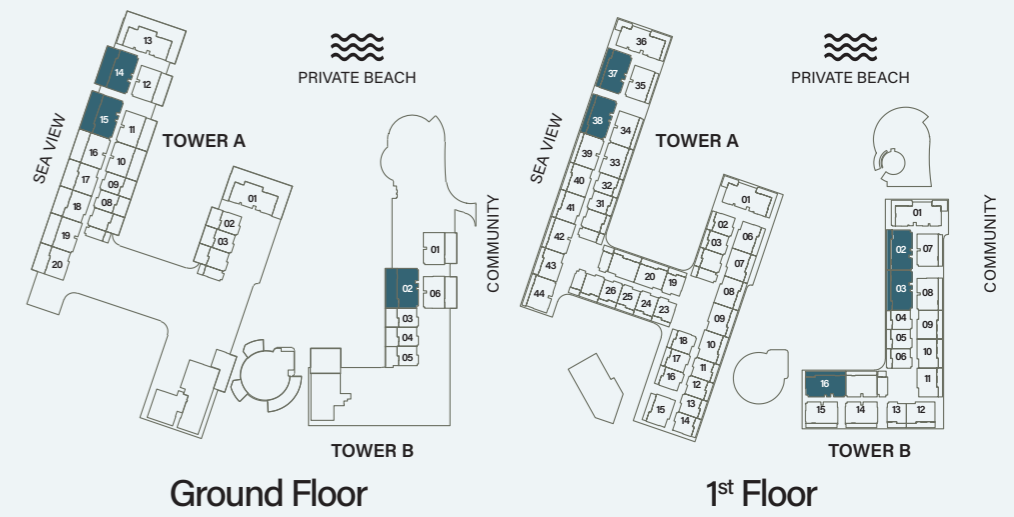
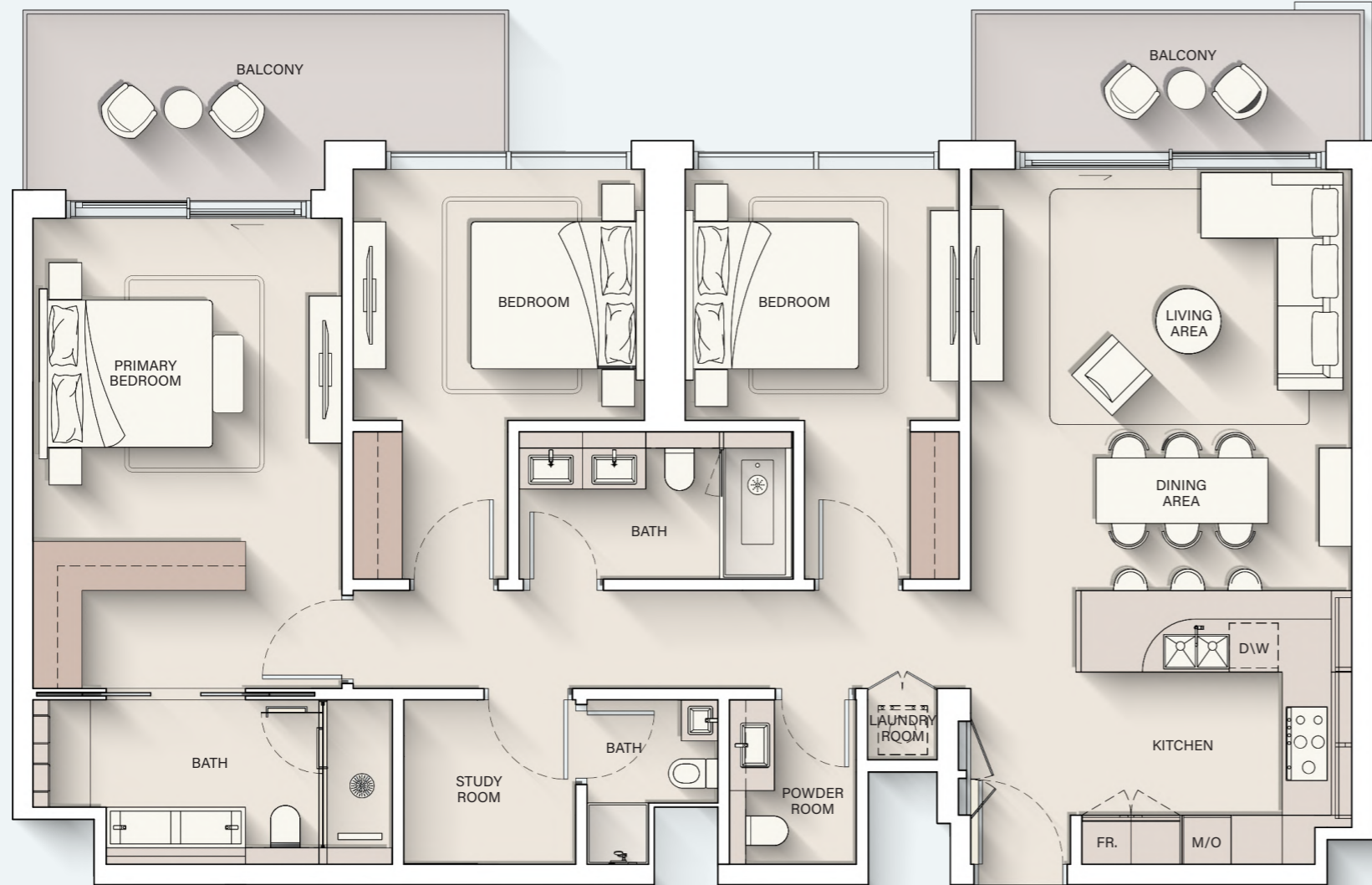
Internal Living Area : **1231.07 sq. ft**

Outdoor Living Area : **168.13 sq. ft**

Total Living Area : **1399.20 sq. ft**



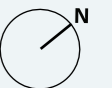
3 - BEDROOM



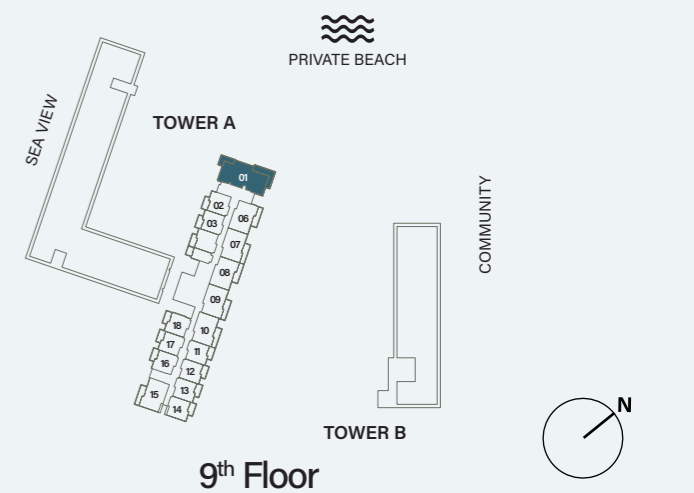
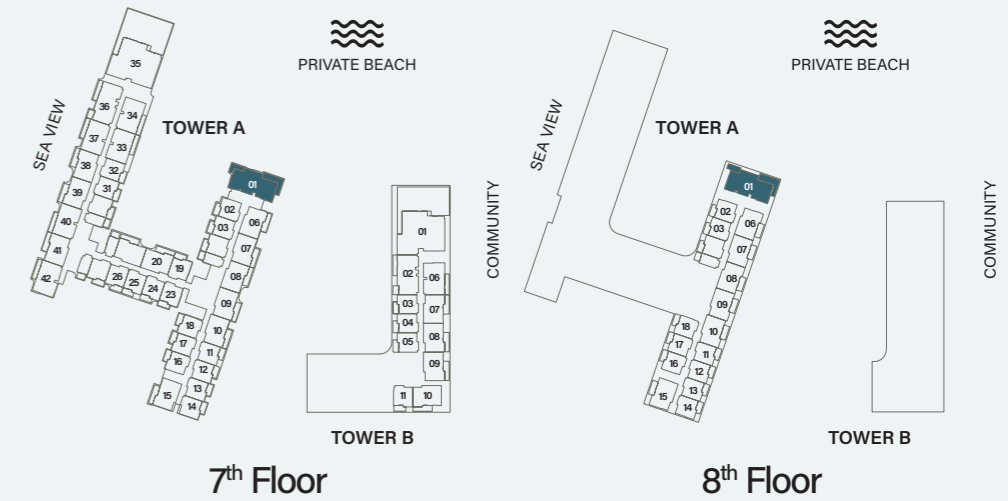
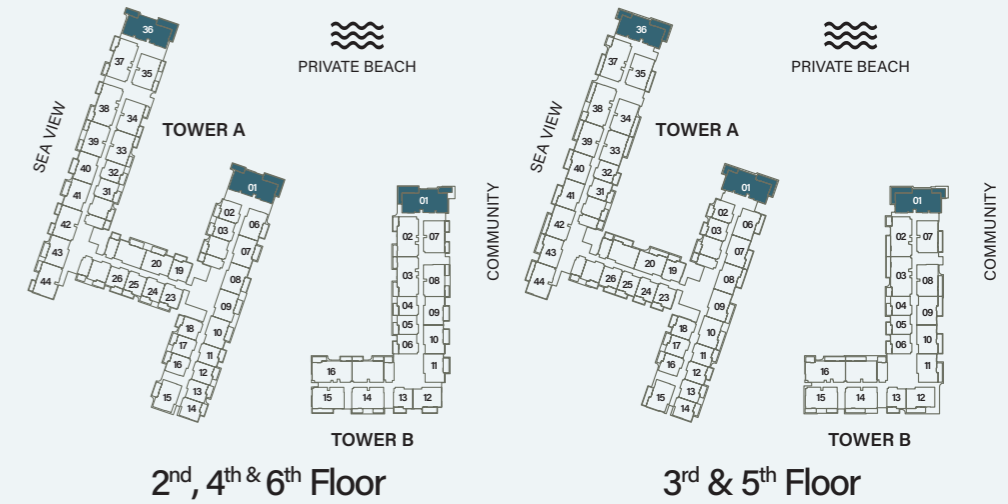
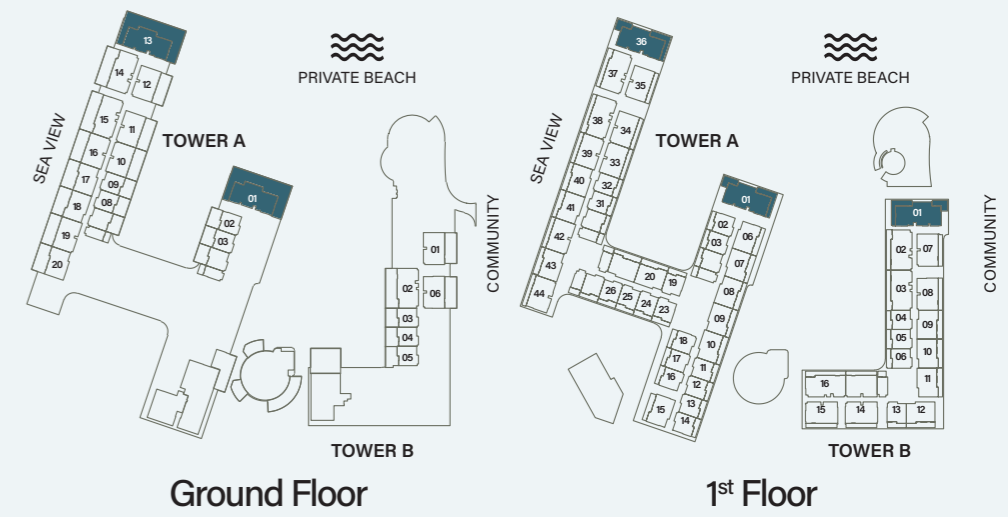
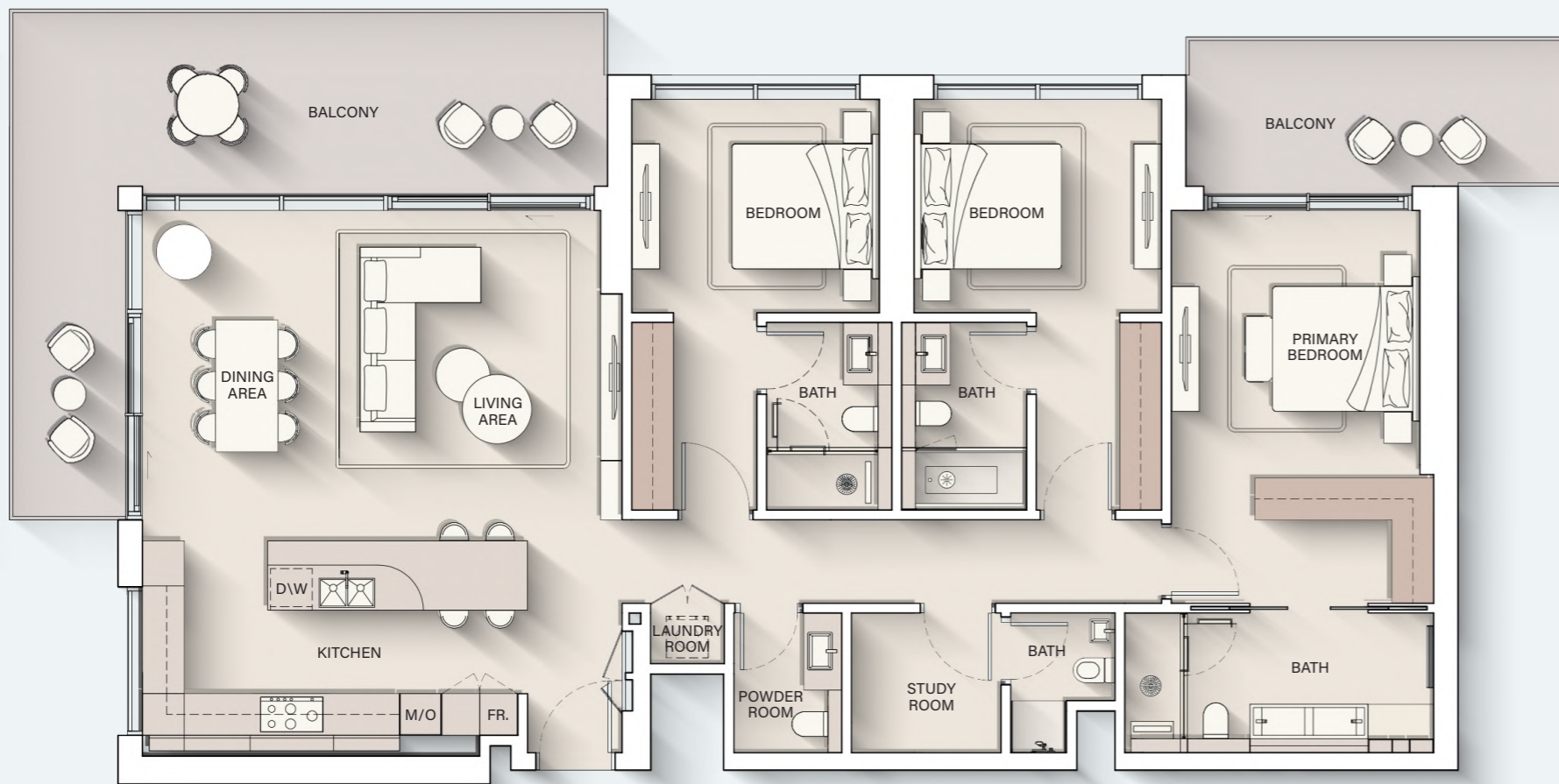
Internal Living Area : **1500.17 sq. ft**

Outdoor Living Area : **230.46 sq. ft**

Total Living Area : **1730.62 sq. ft**



3 - BEDROOM DELUXE

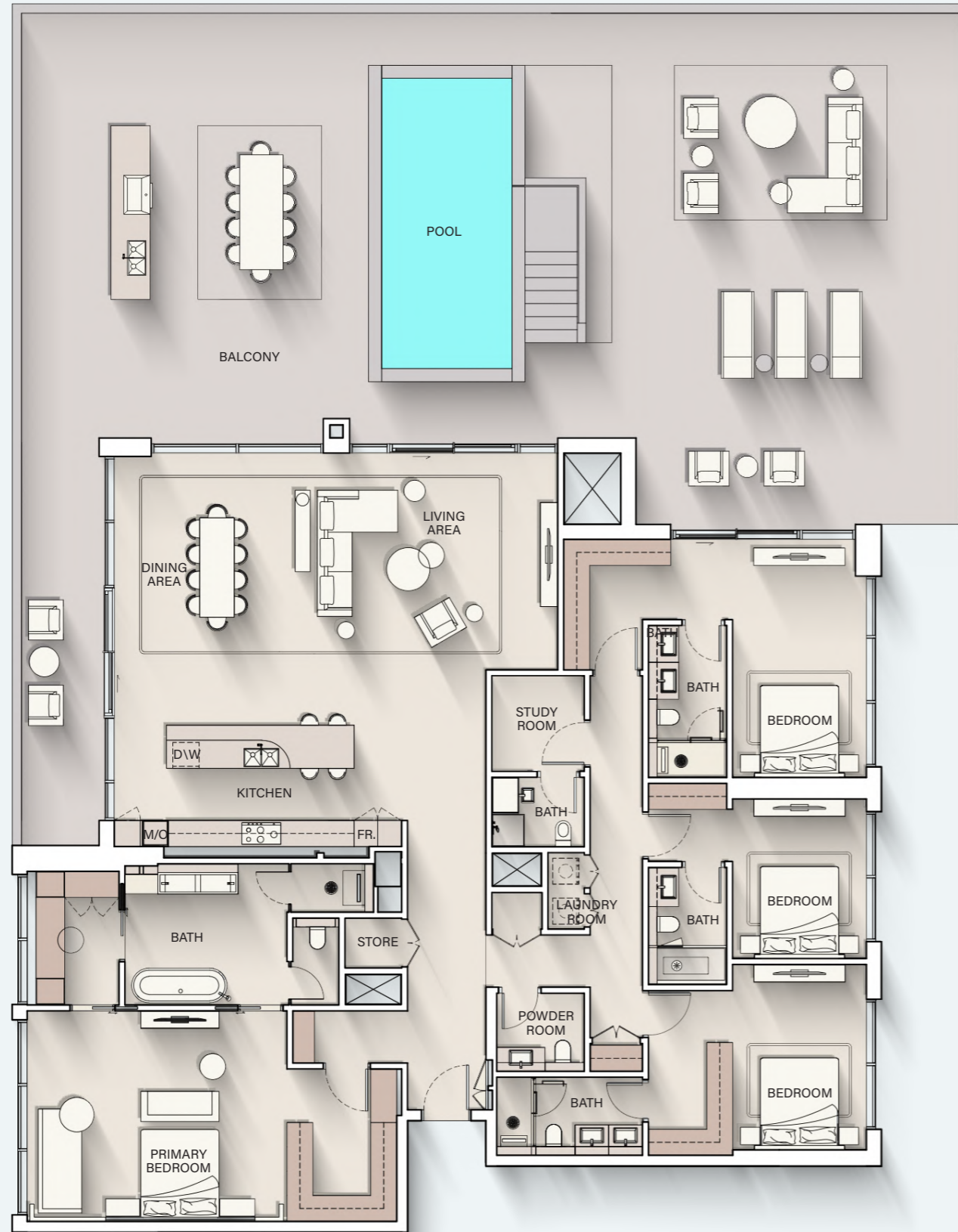


Internal Living Area : 1771.85 sq. ft

Outdoor Living Area : 477.06 sq. ft

Total Living Area : 2248.90 sq. ft

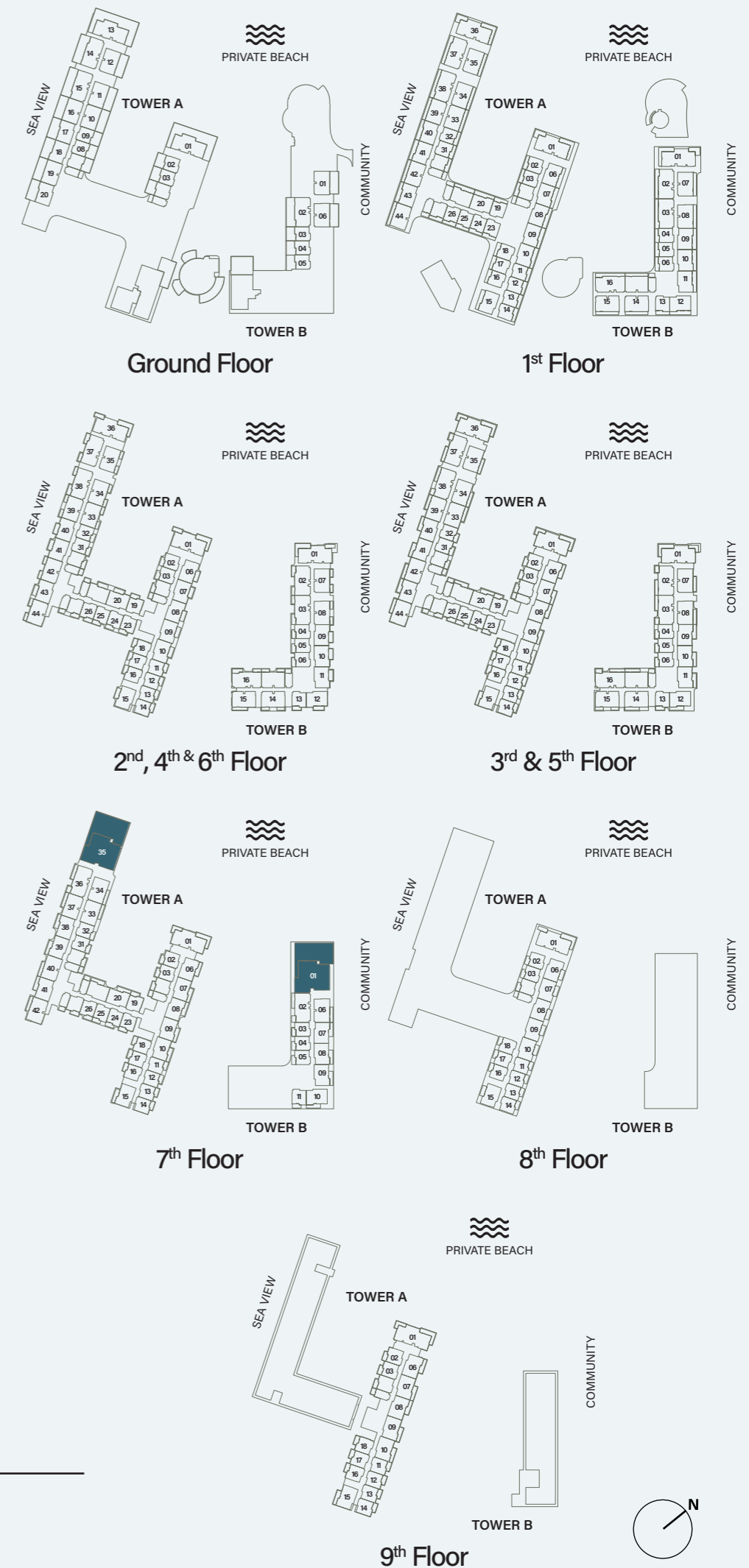
4 - BEDROOM PENTHOUSE



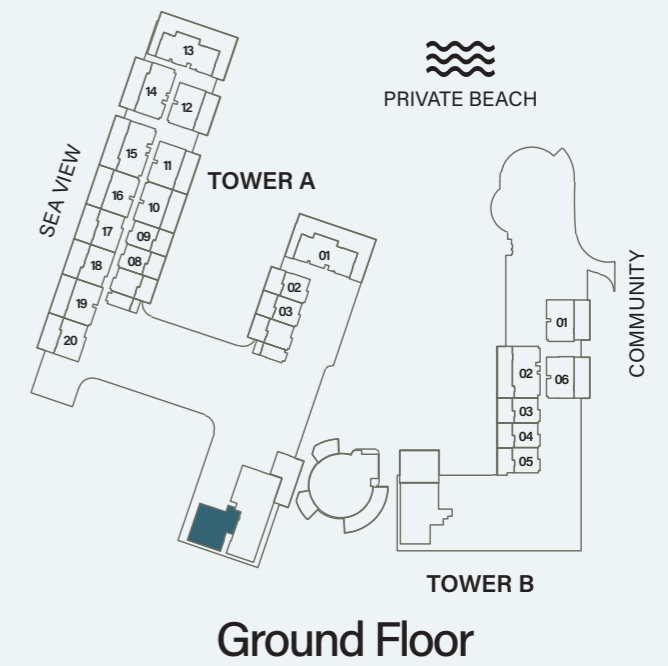
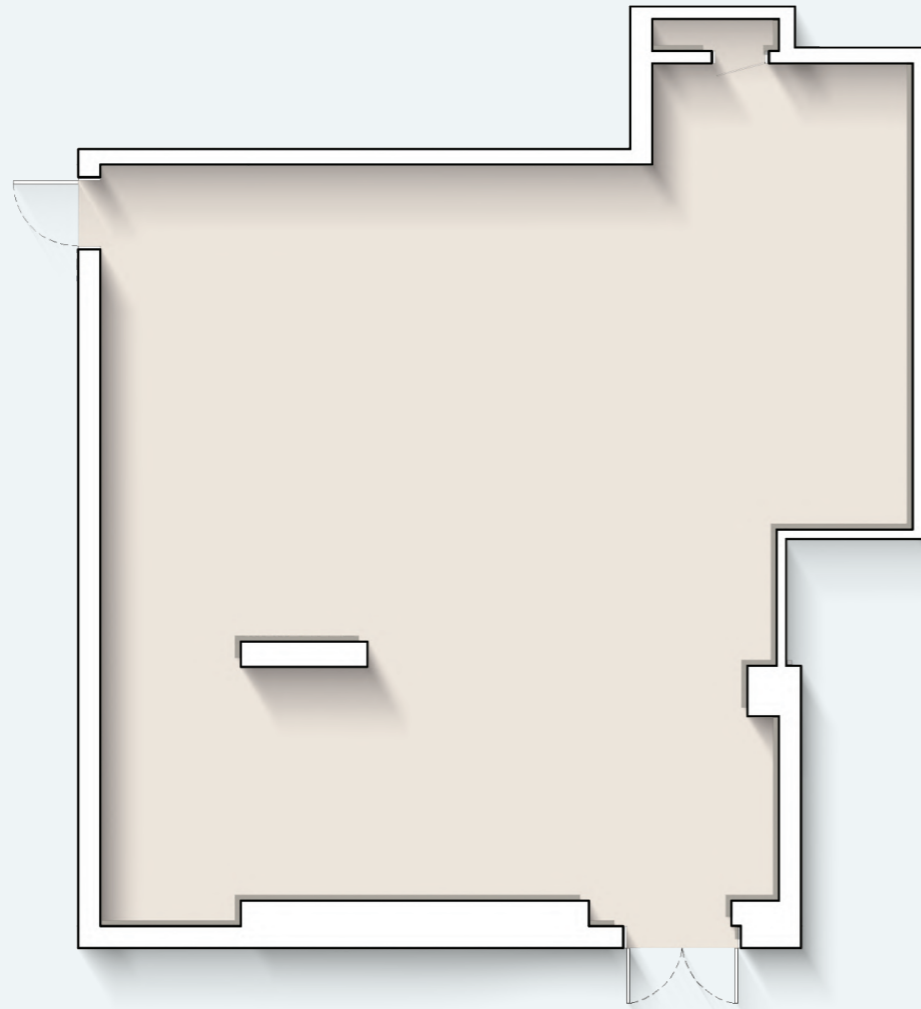
Internal Living Area : **3222.50 sq. ft**

Outdoor Living Area : **2663.64 sq. ft**

Total Living Area : **5886.14 sq. ft**



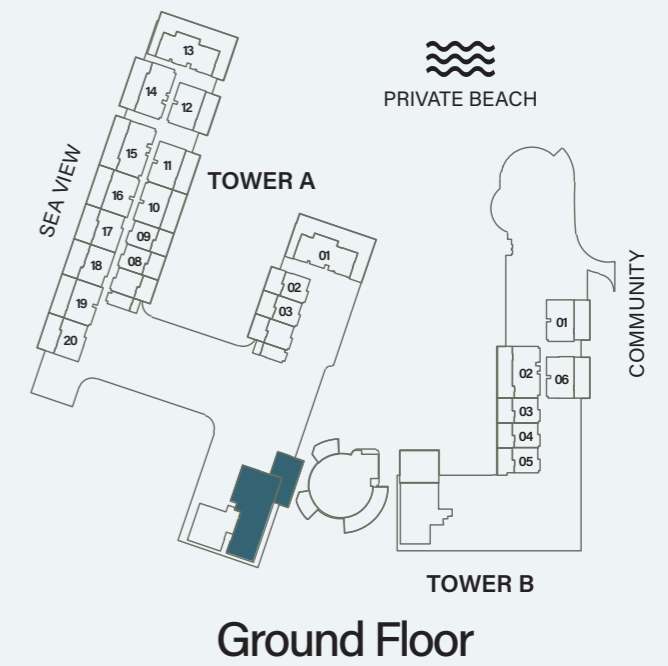
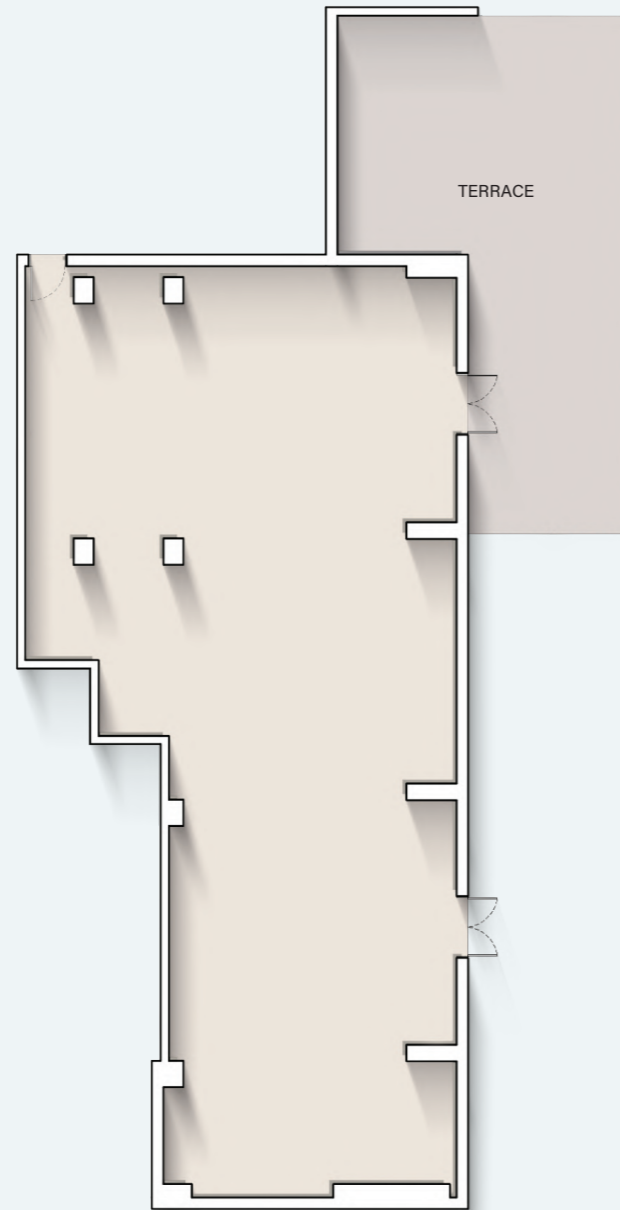
RETAIL - 1



Internal Living Area : **1695.85 sq. ft**



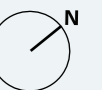
RETAIL - 2



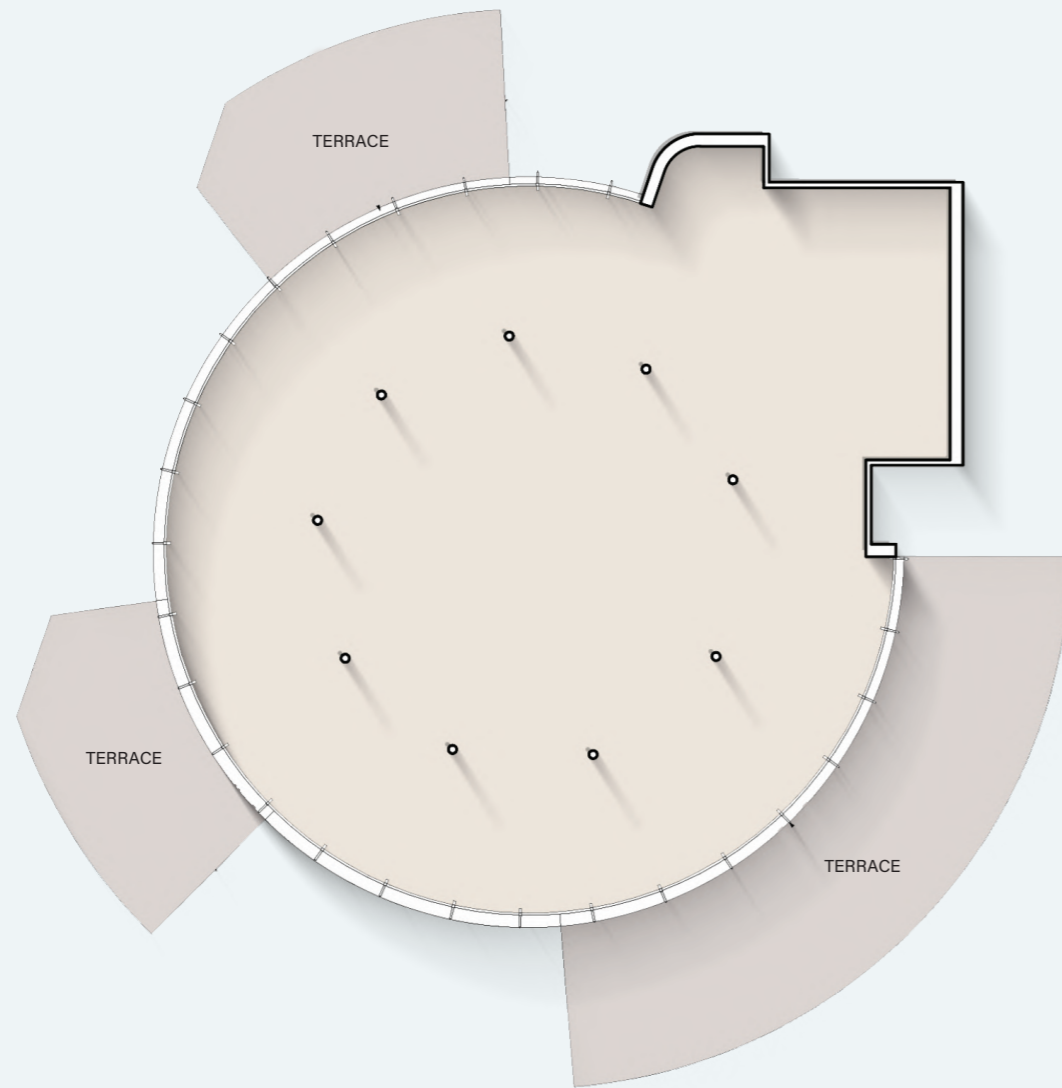
Internal Living Area : **3346.93 sq. ft**

Outdoor Living Area : **1151.42 sq. ft**

Total Living Area : **4498.35 sq. ft**



RETAIL - 3



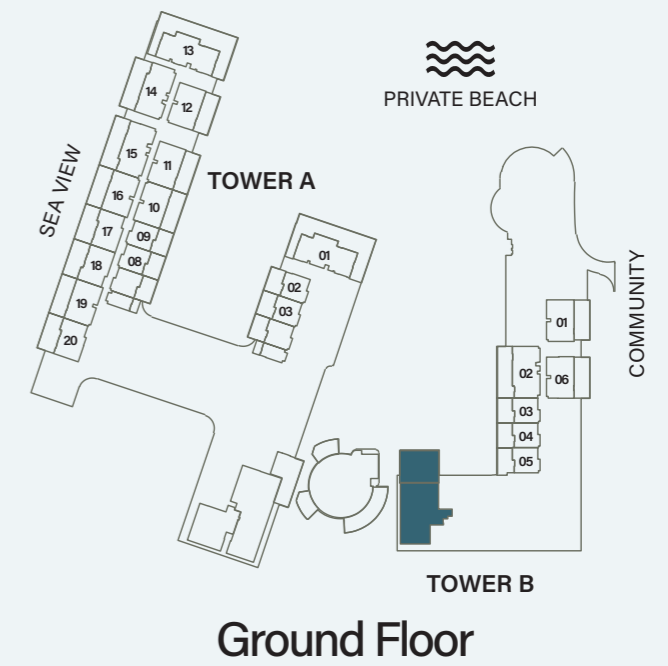
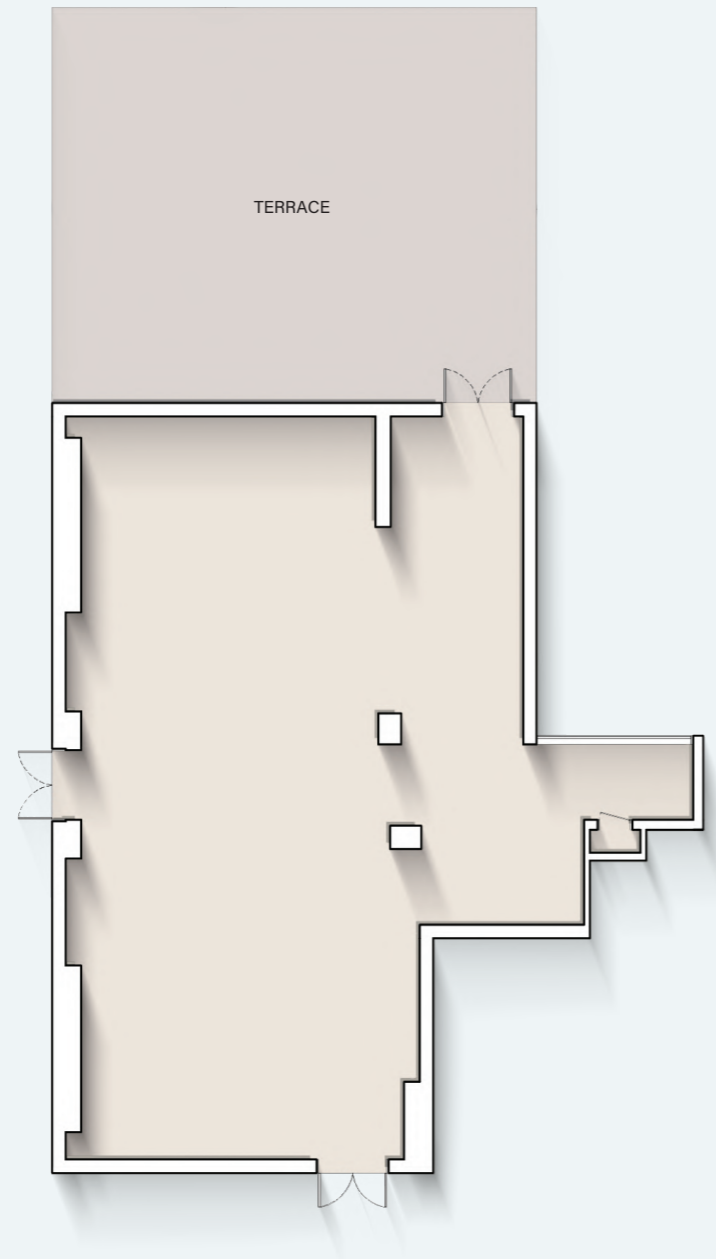
Internal Living Area : **3913.11 sq. ft**

Outdoor Living Area : **1845.90 sq. ft**

Total Living Area : **5759.01 sq. ft**



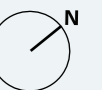
RETAIL - 4



Internal Living Area : **2535.12 sq. ft**

Outdoor Living Area : **1393.71 sq. ft**

Total Living Area : **3928.83 sq. ft**






ELLINGTON
PROPERTIES

800 8288
info@ellingtongroup.com

ELLINGTONPROPERTIES.AE

The renderings and visualizations contained in this brochure are provided for illustrative and marketing purposes. While the information provided is believed to be accurate and reliable at the time of printing, only the information contained in the final Sales and Purchase Agreement will have any legal effect.