



SOBHA SEAHAVEN

TOWER B

The sea has a
new address



Take your imagination
beyond the horizon



Wake up to the sounds of life
by the water's edge





A Symphony of Splendor and the Sea

Introducing a new tower at Sobha SeaHaven – where the horizon is as boundless as your dreams.

It's a mesmerizing oasis of luxury living nestled along the pristine Dubai Harbour.



*For illustrative purposes only

WELCOME TO



SOBHA SEAHAVEN

TOWER B

The kaleidoscope of colors painted over the sky
raises a toast to live life to the fullest.



A new landmark
in the seascape

After the stunning success of SeaHaven Tower A, comes a new opportunity at Sobha SeaHaven Tower B.

It's a whole new tower rising from the heart of Dubai Harbor with views of Palm Jumeirah and Ain Dubai.



*For illustrative purposes only

The stunning backdrops of sea, mesmerising skyline,
and vibrant city make it a story to be told.

Glancing at the landmarks, Sobha SeaHaven Tower B
is a waterfront living redefined.

The truth is
in the details

SeaHaven tower's sail-inspired design against the canvas of the sea and sleek silhouette creates a sense of movement. It takes cues from the elegant superyachts with their fluid lines and clean angles. Capturing the essence of the sea.

To make a statement, the facade blends high-quality materials, rich woods, refined metals, glass, and steel.



For illustrative purposes only



*For illustrative purposes only

From the foyer, enter your exquisitely designed suite. Its open-concept layout and floor-to-ceiling windows mimic the panoramic views from a yacht's deck.

Every element is designed for timeless elegance - sumptuous furnishings, custom millwork, and handcrafted cabinetry makes the difference between ordinary and extraordinary living.

Twice is nice

The Sealaven towers are connected by a stunning sky bridge, giving you twice the experience.



For illustrative purposes only



For illustrative purposes only

Where
Amenities
become essentials

At SeaHaven Tower B, your every desire is met with effortless grace.
Extravagance knows no bounds, and every whim is catered to.

Surrender to blissful rejuvenation. Let your senses be tantalized.
Here over-the-top indulgences are not luxuries but the essence.

Indoor and Outdoor
Amenities



SOBHA SEAHAVEN



Health club with Sauna & Steam
Changing Room

Indoor Cinema



Indoor Game Room
Serviced Club Lounge



Indoor Gym



Pool Deck



Yoga Zone / Meditation Zone

Infinity edge leisure pool facing harbor
with kid's pool



Day Bed



Outdoor Gym

Family Zone with Barbeque Area



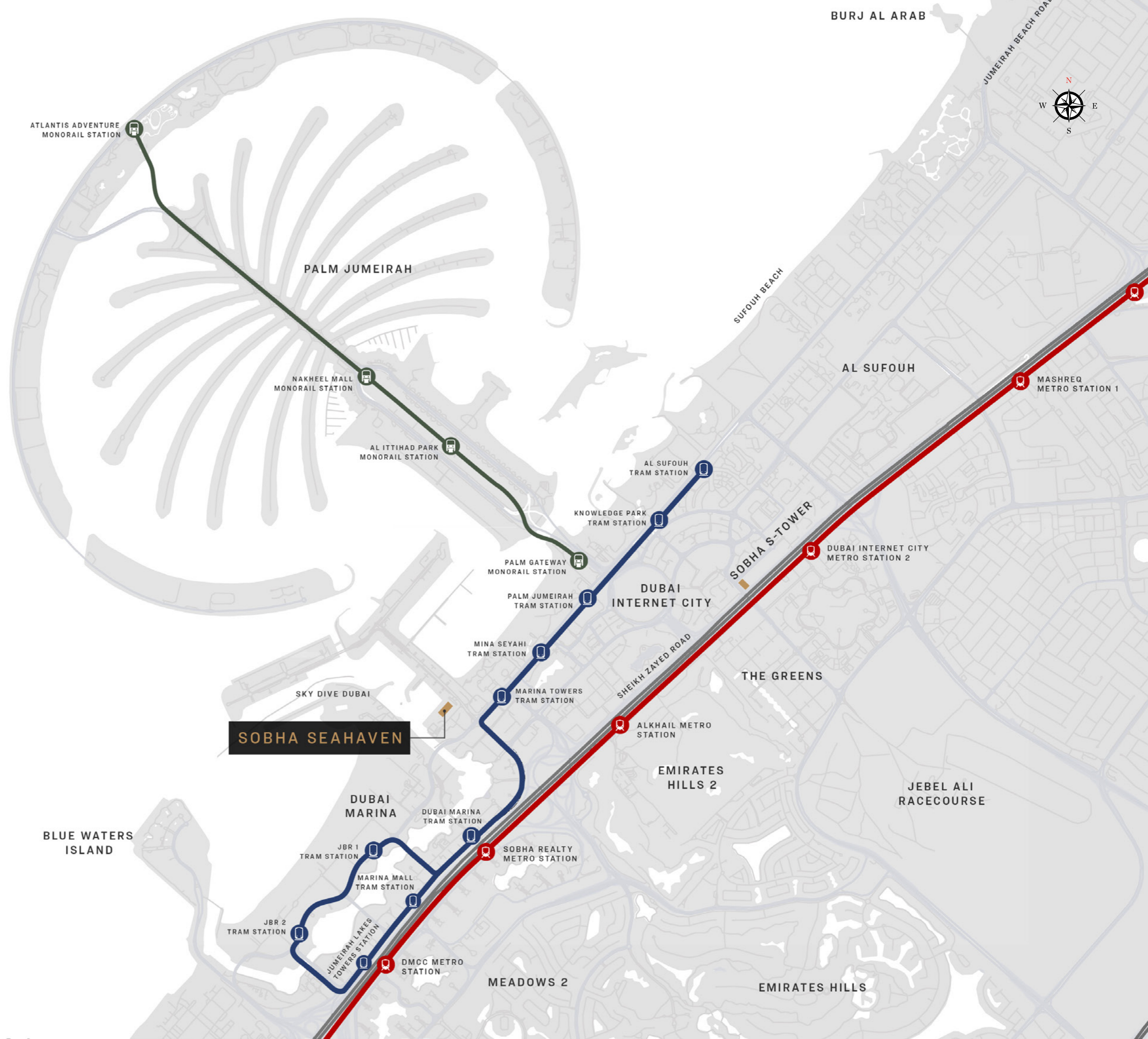
Outdoor Kids' Play Area



Outdoor Cinema



Location Map





Site Plan

FLOOR AND UNIT PLAN
LAYOUTS

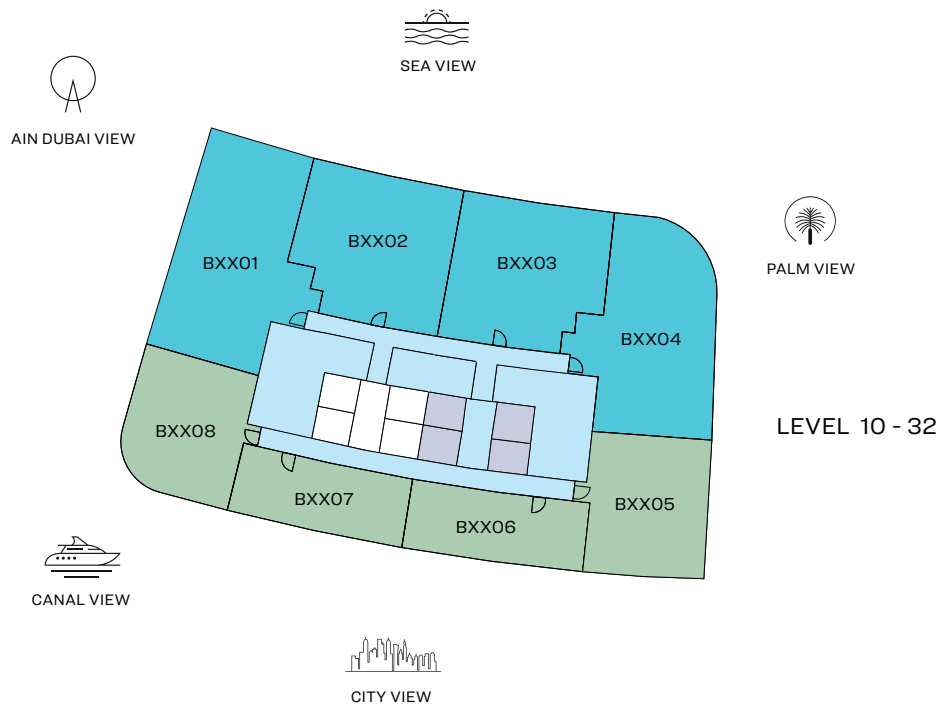


SOBHA SEAHAVEN

TOWER B

FLOOR PLAN LAYOUT

TOWER B



- 1 BED UNIT
- LOBBIES, CORRIDORS & STAIRS
- 2 BED UNIT
- LIFTS

Disclaimer: 1. All dimensions are in metric, measured to wall finishes. 2. All materials, dimensions & drawings are approximate. 3. Information is subject to change without notice, at developer's absolute discretion. 4. Actual area may vary from the stated area. 5. Drawing are not to scale. 6. All images used are for illustrative purpose only and do not represent the actual size, features, specifications, fittings and furnishings. 7. The developer reserves the right to make revisions/ alterations, at its absolute discretion, without any liability whatsoever.

FLOOR PLAN LAYOUT

TOWER B

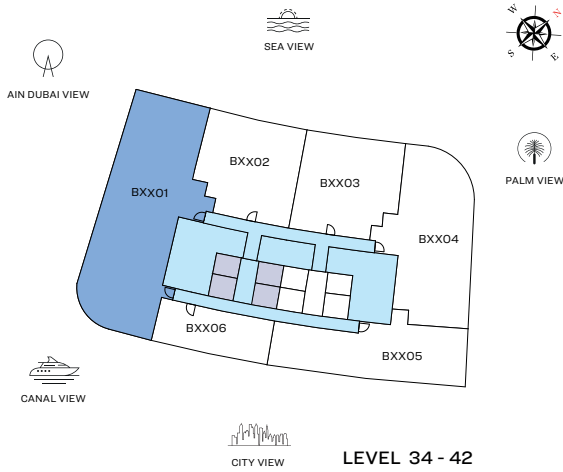


- 1 BED UNIT
- 2 BED UNIT
- 3 BED UNIT
- LOBBIES, CORRIDORS & STAIRS
- LIFTS

Disclaimer: 1. All dimensions are in metric, measured to wall finishes. 2. All materials, dimensions & drawings are approximate. 3. Information is subject to change without notice, at developer's absolute discretion. 4. Actual area may vary from the stated area. 5. Drawing are not to scale. 6. All images used are for illustrative purpose only and do not represent the actual size, features, specifications, fittings and furnishings. 7. The developer reserves the right to make revisions/ alterations, at its absolute discretion, without any liability whatsoever.

3 BEDROOM APARTMENT

TYPE A (with powder room + maid room + balcony)



UNIT



List of unit numbers with this unit plan:

VIEWS

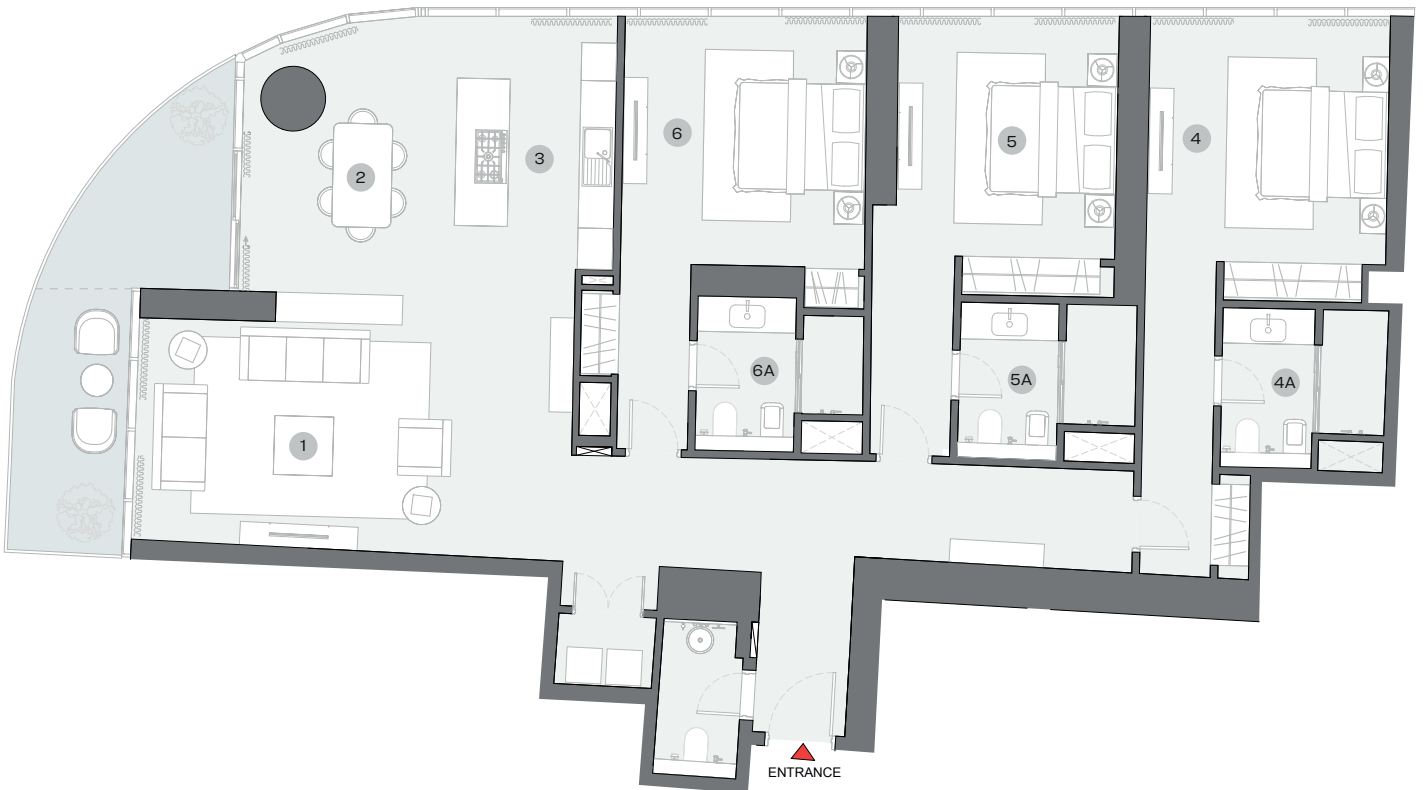
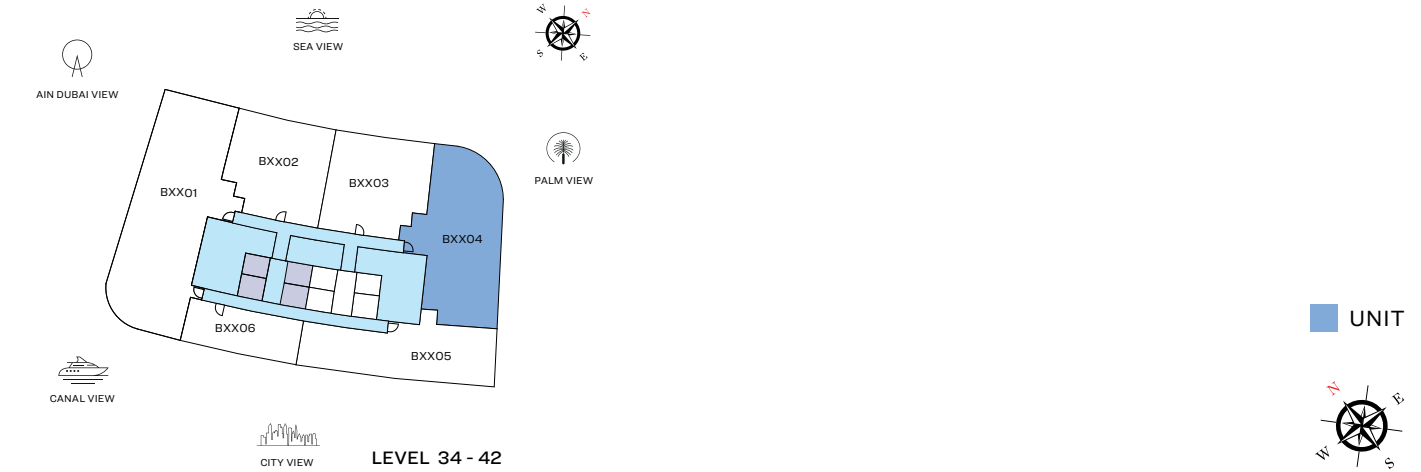
Blue waters, Ain Dubai, Palm Jumeirah, Harbour, Skydive, Marina, Marina Skyline, Sea, JBR Beach

B3401, B3501, B3601, B3701, B3801, B3901, B4001, B4101, B4201

Disclaimer: 1. All dimensions are in metric, measured to wall finishes. 2. All materials, dimensions & drawings are approximate. 3. Information is subject to change without notice, at developer's absolute discretion. 4. Actual area may vary from the stated area. 5. Drawing are not to scale. 6. All images used are for illustrative purpose only and do not represent the actual size, features, specifications, fittings and furnishings. 7. The developer reserves the right to make revisions/ alterations, at its absolute discretion, without any liability whatsoever.

3 BEDROOM APARTMENT

TYPE B (with powder room + balcony)



List of unit numbers with this unit plan:

VIEWS

Palm Jumeirah, Harbour, Sea

B3404, B3504, B3604, B3704, B3804, B3904, B4004, B4104, B4204

Disclaimer: 1. All dimensions are in metric, measured to wall finishes. 2. All materials, dimensions & drawings are approximate. 3. Information is subject to change without notice, at developer's absolute discretion. 4. Actual area may vary from the stated area. 5. Drawing are not to scale. 6. All images used are for illustrative purpose only and do not represent the actual size, features, specifications, fittings and furnishings. 7. The developer reserves the right to make revisions/ alterations, at its absolute discretion, without any liability whatsoever.

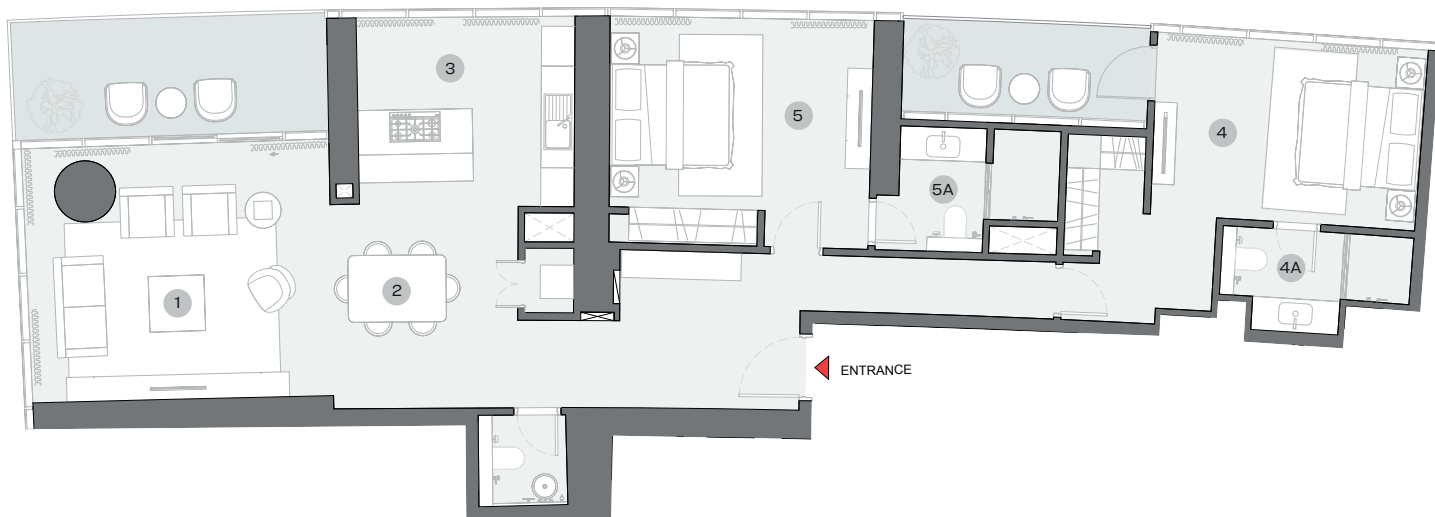
2 BEDROOM APARTMENT

TYPE A (with powder room + balcony)



LEVEL 34 - 42

UNIT



List of unit numbers with this unit plan:

VIEWS

Marina Skyline, Marina

B3405, B3505, B3605, B3705, B3805, B3905, B4005, B4105, B4205

Disclaimer: 1. All dimensions are in metric, measured to wall finishes. 2. All materials, dimensions & drawings are approximate. 3. Information is subject to change without notice, at developer's absolute discretion. 4. Actual area may vary from the stated area. 5. Drawing are not to scale. 6. All images used are for illustrative purpose only and do not represent the actual size, features, specifications, fittings and furnishings. 7. The developer reserves the right to make revisions/ alterations, at its absolute discretion, without any liability whatsoever.

2 BEDROOM APARTMENT

TYPE A (with powder room + balcony)

AREAS & DIMENSIONS

	UNIT NO. B3405 SUITE = 1,538.16 SQ.FT. BALCONY = 227.23 SQ.FT. TOTAL = 1,765.39 SQ.FT.	UNIT NO. B3505 SUITE = 1,539.56 SQ.FT. BALCONY = 227.44 SQ.FT. TOTAL = 1,767.00 SQ.FT.	UNIT NO. B3605 SUITE = 1,541.18 SQ.FT. BALCONY = 227.66 SQ.FT. TOTAL = 1,768.84 SQ.FT.	UNIT NO. B3705 SUITE = 1,542.90 SQ.FT. BALCONY = 229.59 SQ.FT. TOTAL = 1,772.49 SQ.FT.
DESCRIPTION	DIMENSIONS (MM)	DIMENSIONS (MM)	DIMENSIONS (MM)	DIMENSIONS (MM)
1 LIVING ROOM	5350X4550	5400X4550	5400X4550	5400X4550
2 DINING ROOM	3300X3650	3350X3650	3350X3650	3350X3650
3 KITCHEN	3850X3300	3850X3300	3850X3300	3850X3300
4 MASTER BEDROOM	4750X3200	4750X3200	4750X3200	4750X3200
4A M. BEDROOM BATHROOM	3400X1800	3400X1800	3400X1800	3400X1800
5 BEDROOM - 01	4650X3450	4650X3450	4650X3450	4650X3450
5A BEDROOM - 01 BATHROOM	2850X2200	2850X2200	2850X2200	2850X2200

	UNIT NO. B3805 SUITE = 1,544.51 SQ.FT. BALCONY = 230.24 SQ.FT. TOTAL = 1,774.75 SQ.FT.	UNIT NO. B3905 SUITE = 1,546.24 SQ.FT. BALCONY = 231.53 SQ.FT. TOTAL = 1,777.77 SQ.FT.	UNIT NO. B4005 SUITE = 1,548.17 SQ.FT. BALCONY = 231.85 SQ.FT. TOTAL = 1,780.02 SQ.FT.	UNIT NO. B4105 SUITE = 1,550.11 SQ.FT. BALCONY = 233.47 SQ.FT. TOTAL = 1,783.58 SQ.FT.	UNIT NO. B4205 SUITE = 1,552.48 SQ.FT. BALCONY = 233.68 SQ.FT. TOTAL = 1,786.16 SQ.FT.
DESCRIPTION	DIMENSIONS (MM)	DIMENSIONS (MM)	DIMENSIONS (MM)	DIMENSIONS (MM)	DIMENSIONS (MM)
1 LIVING ROOM	5450X4550	5500X4550	5500X4550	5600X4550	5600X4550
2 DINING ROOM	3350X3650	3350X3650	3350X3650	3350X3650	3350X3650
3 KITCHEN	3850X3300	3850X3300	3850X3300	3850X3300	3850X3300
4 MASTER BEDROOM	4750X3200	4750X3200	4750X3250	4750X3250	4750X3250
4A M. BEDROOM BATHROOM	3400X1800	3400X1800	3400X1800	3400X1800	3400X1800
5 BEDROOM - 01	4650X3450	4650X3450	4650X3450	4650X3450	4650X3450
5A BEDROOM - 01 BATHROOM	2850X2200	2850X2200	2850X2200	2850X2200	2850X2200

2 BEDROOM + STUDY APARTMENT

TYPE B (with powder room + yard)

TOTAL SALEABLE AREA

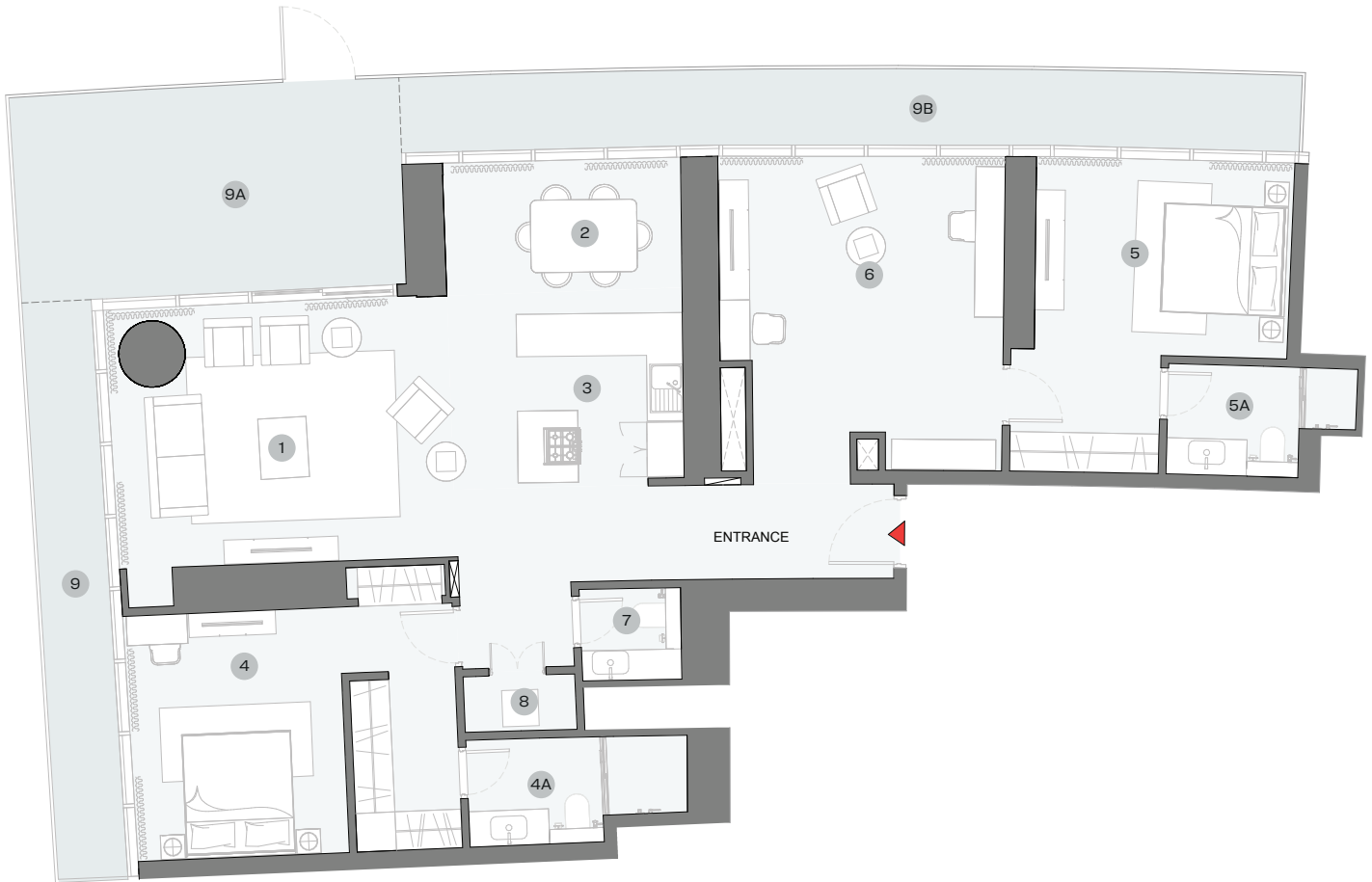
SUITE = 1,722.23 SQ.FT.

YARD = 590.83 SQ.FT.

TOTAL = 2,313.06 SQ.FT.



UNIT



DIMENSIONS (MM)

1 LIVING - 5500 x 4350	4 MASTER BEDROOM - 3550 x 4050	6 STUDY ROOM - 4700 x 4550
2 DINING - 3950 x 2550	4A MASTER BATHROOM - 3600 x 1750	7 POWDER - 1600 x 1500
3 KITCHEN - 2650 x 2750	5 BEDROOM 2 - 3550 x 3250	8 UTILITY - 1850 x 900
	5A BATHROOM 2 - 3100 x 1800	9 YARD 1 - 1200 x 9500
		9A YARD 2 - 5250 x 3400
		9B YARD 3 - 14900 x 1200

List of unit numbers with this unit plan:

VIEWS

Amenities
B905

Disclaimer: 1. All dimensions are in metric, measured to wall finishes. 2. All materials, dimensions & drawings are approximate. 3. Information is subject to change without notice, at developer's absolute discretion. 4. Actual area may vary from the stated area. 5. Drawing are not to scale. 6. All images used are for illustrative purpose only and do not represent the actual size, features, specifications, fittings and furnishings. 7. The developer reserves the right to make revisions/ alterations, at its absolute discretion, without any liability whatsoever.

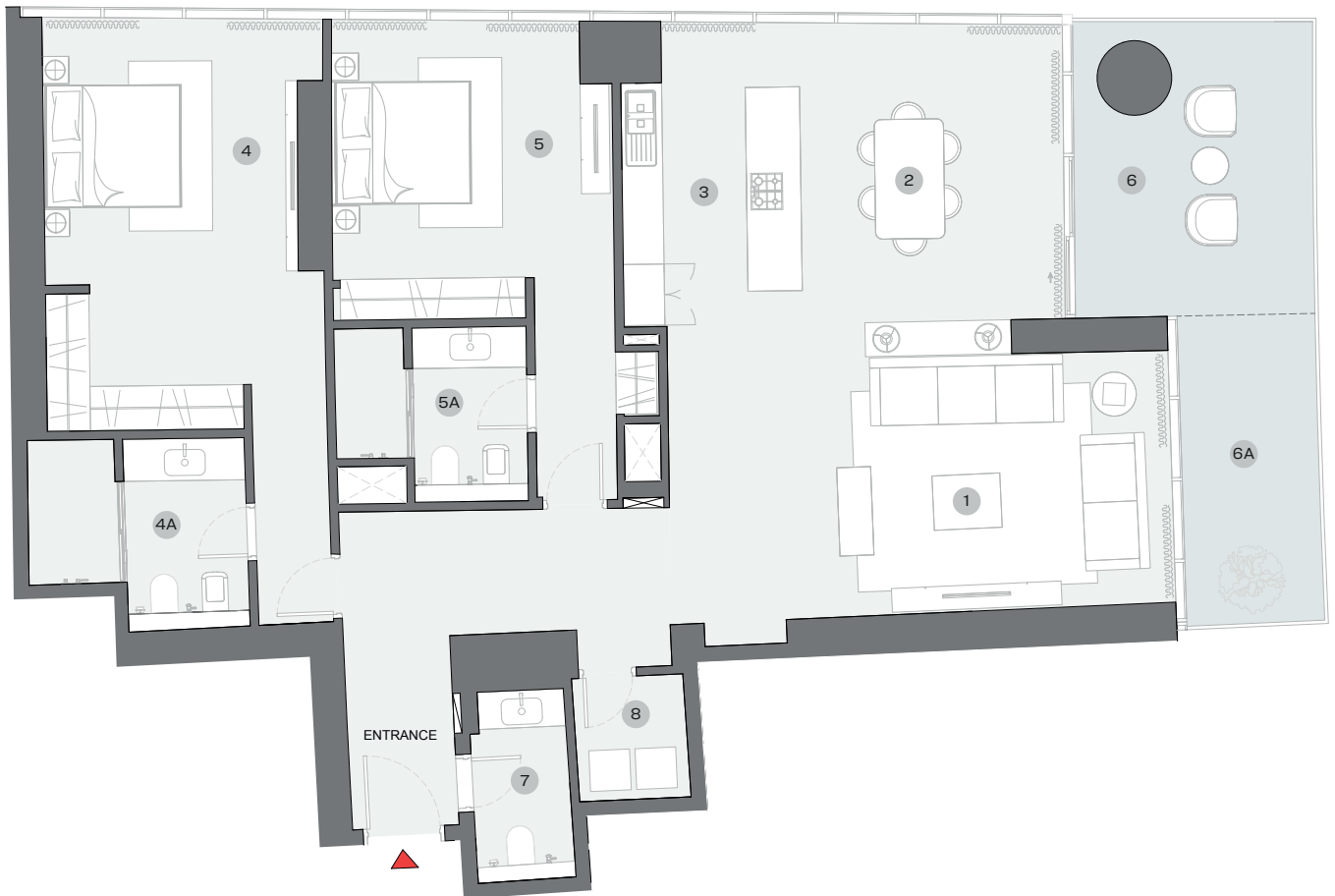
2 BEDROOM APARTMENT

TYPE E (with powder room + balcony)

TOTAL SALEABLE AREA
 SUITE RANGE = 1,749.78 - 1,752.80 SQ.FT.
 BALCONY RANGE = 273.30 - 274.48 SQ.FT.
 TOTAL RANGE = 2,023.08 - 2,027.28 SQ.FT.



UNIT



List of unit numbers with this unit plan:

VIEWS

Sea, Amenities
 B1001

Blue waters, Ain Dubai, Palm Jumeirah, Harbour, Sea, Skydive
 B1101, B1201, B1301, B1401, B1501, B1601, B1701, B1801, B1901,
 B2001, B2101, B2201, B2301, B2401, B2501, B2601, B2701, B2801,
 B2901, B3001, B3101, B3201

DIMENSIONS (MM)

1 LIVING - 7400 X 3700	4 MASTER BEDROOM - 3700 X 5350	6 BALCONY 1 - 3500 X 4300
2 DINING - 3850 X 4800	4A MASTER BATHROOM - 3200 X 2850	6A BALCONY 2 - 2000 X 4500
3 KITCHEN - 2600 X 4000	5 BEDROOM 2 - 4100 X 3750	7 POWDER - 1450 X 2800
	5A BATHROOM 2 - 2800 X 2550	8 UTILITY - 1650 X 2000

Disclaimer: 1. All dimensions are in metric, measured to wall finishes. 2. All materials, dimensions & drawings are approximate. 3. Information is subject to change without notice, at developer's absolute discretion. 4. Actual area may vary from the stated area. 5. Drawing are not to scale. 6. All images used are for illustrative purpose only and do not represent the actual size, features, specifications, fittings and furnishings. 7. The developer reserves the right to make revisions/ alterations, at its absolute discretion, without any liability whatsoever.

2 BEDROOM APARTMENT

TYPE E (with powder room + yard) VARIANT 1

TOTAL SALEABLE AREA

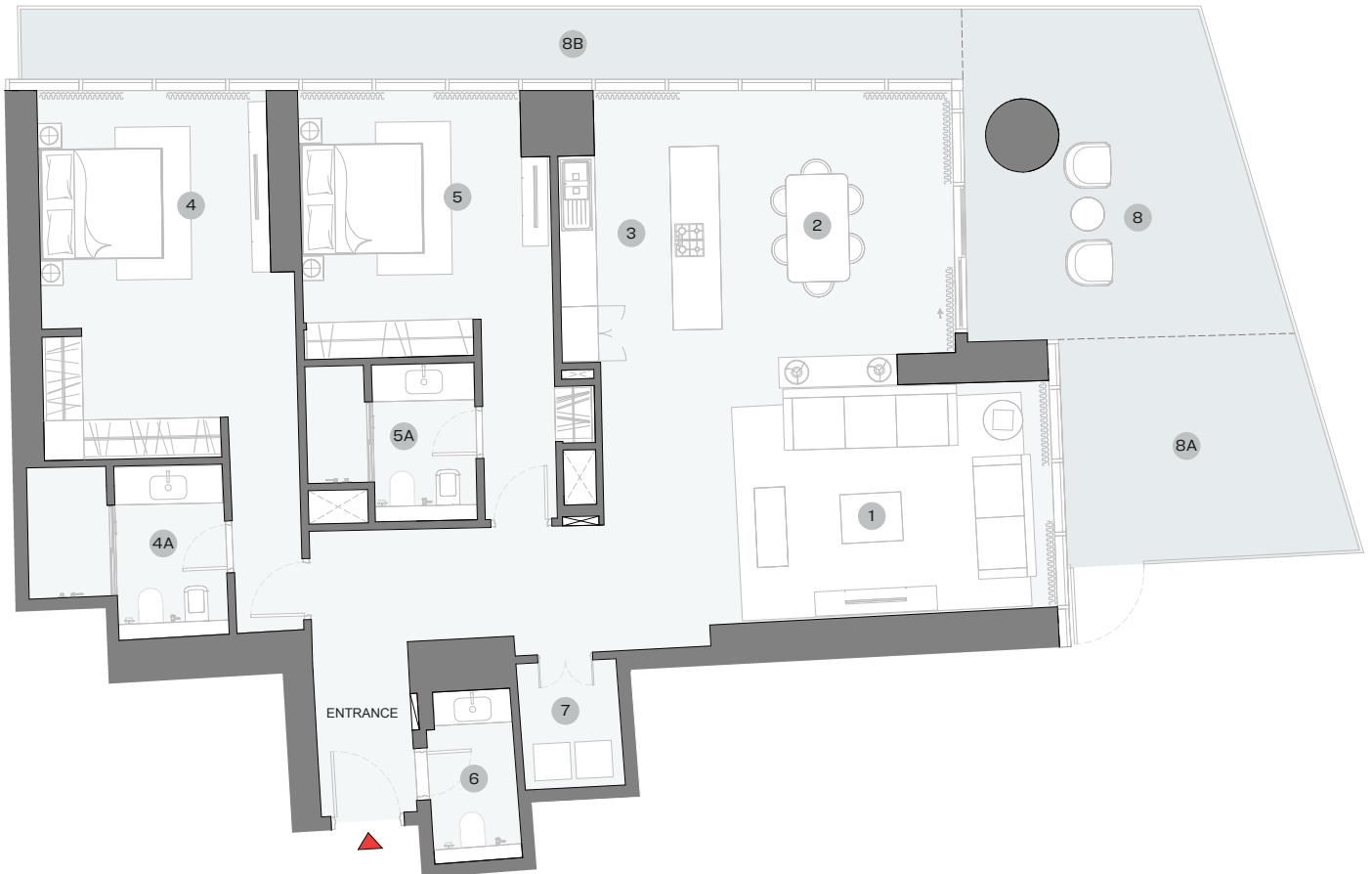
SUITE = 1,751.40 SQ.FT.

YARD = 656.60 SQ.FT.

TOTAL = 2,408.00 SQ.FT.



UNIT



DIMENSIONS (MM)

List of unit numbers with this unit plan:

VIEWS

Sea, Amenities
B901

- | | | |
|-------------------------|----------------------------------|--------------------------|
| 1 LIVING - 7400 x 3700 | 4 MASTER BEDROOM - 3700 x 5350 | 6 POWDER - 1450 x 2800 |
| 2 DINING - 3850 x 4800 | 4A MASTER BATHROOM - 3200 x 2850 | 7 UTILITY - 1650 x 2000 |
| 3 KITCHEN - 2600 x 4000 | 5 BEDROOM 2 - 4100 x 3800 | 8 YARD 1 - 4200 x 5400 |
| | 5A BATHROOM 2 - 2800 x 2550 | 8A YARD 2 - 4000 x 3700 |
| | | 8B YARD 3 - 15400 x 1200 |

Disclaimer: 1. All dimensions are in metric, measured to wall finishes. 2. All materials, dimensions & drawings are approximate. 3. Information is subject to change without notice, at developer's absolute discretion. 4. Actual area may vary from the stated area. 5. Drawing are not to scale. 6. All images used are for illustrative purpose only and do not represent the actual size, features, specifications, fittings and furnishings. 7. The developer reserves the right to make revisions/ alterations, at its absolute discretion, without any liability whatsoever.

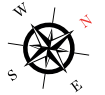
2 BEDROOM APARTMENT

TYPE F (with powder room + balcony)

TOTAL SALEABLE AREA
 SUITE RANGE = 1,270.03 - 1,273.48 SQ.FT.
 BALCONY RANGE = 395.90 - 396.76 SQ.FT.
 TOTAL RANGE = 1,665.93 - 1,670.24 SQ.FT.



UNIT



List of unit numbers with this unit plan:

VIEWS

Sea, Amenities
 B1002

Palm Jumeirah, Harbour, Sea
 B1102, B1202, B1302, B1402, B1502, B1602, B1702, B1802,
 B1902, B2002, B2102, B2202, B2302, B2402, B2502, B2602,
 B2702, B2802, B2902, B3002, B3102, B3202

DIMENSIONS (MM)

1 LIVING - 4200 X 4100	4 MASTER BEDROOM - 3900 X 4450	6 BALCONY 1 - 8100 X 3100
2 DINING - 4300 X 2800	4A MASTER BATHROOM - 3000 X 2600	6A BALCONY 2 - 4650 X 2000
3 KITCHEN - 2800 X 2500	5 BEDROOM 2 - 3650 X 3650	7 POWDER - 1800 X 2200
	5A BATHROOM 2 - 2600 X 2600	8 UTILITY - 850 X 1500

Disclaimer: 1. All dimensions are in metric, measured to wall finishes. 2. All materials, dimensions & drawings are approximate. 3. Information is subject to change without notice, at developer's absolute discretion. 4. Actual area may vary from the stated area. 5. Drawing are not to scale. 6. All images used are for illustrative purpose only and do not represent the actual size, features, specifications, fittings and furnishings. 7. The developer reserves the right to make revisions/ alterations, at its absolute discretion, without any liability whatsoever.

2 BEDROOM APARTMENT

TYPE F (with powder room + balcony)



UNIT



List of unit numbers with this unit plan:

VIEWS

Palm Jumeirah, Harbour, Sea
 B3402, B3502, B3602, B3702, B3802, B3902, B4002, B4102, B4202

Disclaimer: 1. All dimensions are in metric, measured to wall finishes. 2. All materials, dimensions & drawings are approximate. 3. Information is subject to change without notice, at developer's absolute discretion. 4. Actual area may vary from the stated area. 5. Drawing are not to scale. 6. All images used are for illustrative purpose only and do not represent the actual size, features, specifications, fittings and furnishings. 7. The developer reserves the right to make revisions/ alterations, at its absolute discretion, without any liability whatsoever.

2 BEDROOM APARTMENT

TYPE F (with powder room + yard) VARIANT 1

TOTAL SALEABLE AREA

SUITE = 1,271.43 SQ.FT.

YARD = 336.05 SQ.FT.

TOTAL = 1,607.48 SQ.FT.



■ UNIT



List of unit numbers with this unit plan:

VIEWS

Sea, Amenities
B902

DIMENSIONS (MM)

1 LIVING - 4200 x 4100	4 MASTER BEDROOM - 3900 x 4450	6 POWDER - 1800 x 1950
2 DINING - 4300 x 2800	4A MASTER BATHROOM - 3000 x 2600	7 UTILITY - 850 x 1500
3 KITCHEN - 2800 x 2500	5 BEDROOM 2 - 3650 x 3650	8 YARD 1 - 6750 x 3600
	5A BATHROOM 2 - 2600 x 2600	8A YARD 2 - 2250 x 2500

Disclaimer: 1. All dimensions are in metric, measured to wall finishes. 2. All materials, dimensions & drawings are approximate. 3. Information is subject to change without notice, at developer's absolute discretion. 4. Actual area may vary from the stated area. 5. Drawing are not to scale. 6. All images used are for illustrative purpose only and do not represent the actual size, features, specifications, fittings and furnishings. 7. The developer reserves the right to make revisions/ alterations, at its absolute discretion, without any liability whatsoever.

2 BEDROOM APARTMENT

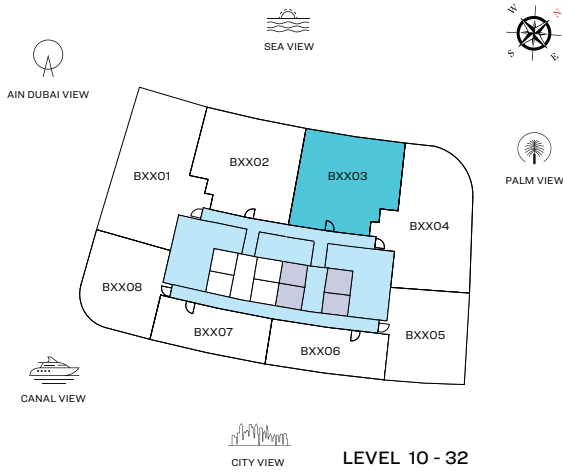
TYPE G (with powder room + balcony)

TOTAL SALEABLE AREA

SUITE RANGE = 1,267.88 - 1,270.57 SQ.FT.

BALCONY RANGE = 393.31 - 394.50 SQ.FT.

TOTAL RANGE = 1,661.19 - 1,665.07 SQ.FT.



UNIT



List of unit numbers with this unit plan:

VIEWS

Sea, Amenities
B1003

Palm Jumeirah, Harbour, Sea

B1103, B1203, B1303, B1403, B1503, B1603, B1703, B1803, B1903, B2003, B2103, B2203, B2303, B2403, B2503, B2603, B2703, B2803, B2903, B3003, B3103, B3203

DIMENSIONS (MM)

1 LIVING - 4150 X 4050	4 MASTER BEDROOM - 3800 X 4450	6 BALCONY 1 - 8000 X 3100
2 DINING - 4300 X 2800	4A MASTER BATHROOM - 3000 X 2600	6A BALCONY 2 - 4600 X 2000
3 KITCHEN - 2850 X 2500	5 BEDROOM 2 - 3800 X 3650	7 POWDER - 1850 X 1950
	5A BATHROOM 2 - 2600 X 2600	8 UTILITY - 850 X 1500

Disclaimer: 1. All dimensions are in metric, measured to wall finishes. 2. All materials, dimensions & drawings are approximate. 3. Information is subject to change without notice, at developer's absolute discretion. 4. Actual area may vary from the stated area. 5. Drawing are not to scale. 6. All images used are for illustrative purpose only and do not represent the actual size, features, specifications, fittings and furnishings. 7. The developer reserves the right to make revisions/ alterations, at its absolute discretion, without any liability whatsoever.

2 BEDROOM APARTMENT

TYPE G (with powder room + balcony)



UNIT



List of unit numbers with this unit plan:

VIEWS

Palm Jumeirah, Harbour, Sea

B3403, B3503, B3603, B3703, B3803, B3903, B4003, B4103, B4203

Disclaimer: 1. All dimensions are in metric, measured to wall finishes. 2. All materials, dimensions & drawings are approximate. 3. Information is subject to change without notice, at developer's absolute discretion. 4. Actual area may vary from the stated area. 5. Drawing are not to scale. 6. All images used are for illustrative purpose only and do not represent the actual size, features, specifications, fittings and furnishings. 7. The developer reserves the right to make revisions/ alterations, at its absolute discretion, without any liability whatsoever.

2 BEDROOM APARTMENT

TYPE G (with powder room + balcony)

AREAS & DIMENSIONS

DESCRIPTION	UNIT NO. B3403	UNIT NO. B3503	UNIT NO. B3603	UNIT NO. B3703
	SUITE = 1,283.70 SQ.FT. BALCONY = 386.64 SQ.FT. TOTAL = 1,670.34 SQ.FT.	SUITE = 1,283.70 SQ.FT. BALCONY = 386.64 SQ.FT. TOTAL = 1,670.34 SQ.FT.	SUITE = 1,283.70 SQ.FT. BALCONY = 386.64 SQ.FT. TOTAL = 1,670.34 SQ.FT.	SUITE = 1,283.70 SQ.FT. BALCONY = 386.64 SQ.FT. TOTAL = 1,670.34 SQ.FT.
	DIMENSIONS (MM)	DIMENSIONS (MM)	DIMENSIONS (MM)	DIMENSIONS (MM)
1 LIVING ROOM	4150 X 4050	4150X4050	4150X4050	4150X4100
2 DINING ROOM	4250 X 2800	4250X2800	4250X2800	4250X2800
3 KITCHEN	2850 X 2500	2850X2500	2850X2500	2850X2500
4 MASTER BEDROOM	3850 X 4450	3850X4450	3850X4450	3850X4450
4A M. BEDROOM BATHROOM	2950 X 2550	2950X2550	2950X2550	2950X2550
5 BEDROOM - 01	3600 X 3700	3600X3700	3600X3700	3600X3700
5A BEDROOM - 01 BATHROOM	2800 X 2550	2800X2550	2800X2550	2800X2550
6 POWDER ROOM	1850 X 1950	1850X1950	1850X1950	1850X1950

DESCRIPTION	UNIT NO. B3803	UNIT NO. B3903	UNIT NO. B4003	UNIT NO. B4103	UNIT NO. B4203
	SUITE = 1,283.70 SQ.FT. BALCONY = 386.64 SQ.FT. TOTAL = 1,670.34 SQ.FT.	SUITE = 1,283.70 SQ.FT. BALCONY = 386.64 SQ.FT. TOTAL = 1,670.34 SQ.FT.	SUITE = 1,283.70 SQ.FT. BALCONY = 386.64 SQ.FT. TOTAL = 1,670.34 SQ.FT.	SUITE = 1,283.70 SQ.FT. BALCONY = 386.64 SQ.FT. TOTAL = 1,670.34 SQ.FT.	SUITE = 1,282.95 SQ.FT. BALCONY = 380.07 SQ.FT. TOTAL = 1,663.02 SQ.FT.
	DIMENSIONS (MM)	DIMENSIONS (MM)	DIMENSIONS (MM)	DIMENSIONS (MM)	DIMENSIONS (MM)
1 LIVING ROOM	4150X4100	4150X4100	4150X4100	4150X4100	4150X4050
2 DINING ROOM	4250X2800	4250X2800	4250X2800	4250X2800	4200X2800
3 KITCHEN	2850X2500	2850X2500	2850X2500	2850X2500	2850X2500
4 MASTER BEDROOM	3850X4450	3850X4450	3850X4450	3850X4450	3850X4450
4A M. BEDROOM BATHROOM	2950X2550	2950X2550	2950X2550	2950X2550	2950X2550
5 BEDROOM - 01	3600X3700	3600X3700	3600X3700	3600X3700	3600X3700
5A BEDROOM - 01 BATHROOM	2800X2550	2800X2550	2800X2550	2800X2550	2800X2550
6 POWDER ROOM	1850X1950	1850X1950	1850X1950	1850X1950	1850X1950

2 BEDROOM APARTMENT

TYPE G (with powder room + yard) VARIANT 1

TOTAL SALEABLE AREA

SUITE = 1,267.88 SQ.FT.

YARD = 330.67 SQ.FT.

TOTAL = 1,598.55 SQ.FT.



■ UNIT



List of unit numbers with this unit plan:

VIEWS

Sea, Amenities
B903

DIMENSIONS (MM)

1 LIVING - 4150 x 4050	4 MASTER BEDROOM - 3800 x 4450	6 POWDER - 1800 x 1950
2 DINING - 4300 x 2800	4A MASTER BATHROOM - 3000 x 2600	7 UTILITY - 850 x 1500
3 KITCHEN - 2850 x 2500	5 BEDROOM 2 - 3800 x 3650	8 YARD 1 - 6650 x 3600
	5A BATHROOM 2 - 2600 x 2600	8A YARD 2 - 2050 x 2500

Disclaimer: 1. All dimensions are in metric, measured to wall finishes. 2. All materials, dimensions & drawings are approximate. 3. Information is subject to change without notice, at developer's absolute discretion. 4. Actual area may vary from the stated area. 5. Drawing are not to scale. 6. All images used are for illustrative purpose only and do not represent the actual size, features, specifications, fittings and furnishings. 7. The developer reserves the right to make revisions/ alterations, at its absolute discretion, without any liability whatsoever.

2 BEDROOM APARTMENT

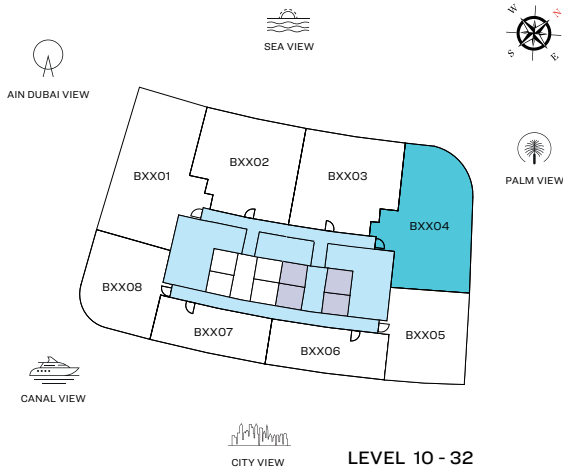
TYPE H (with powder room + balcony)

TOTAL SALEABLE AREA

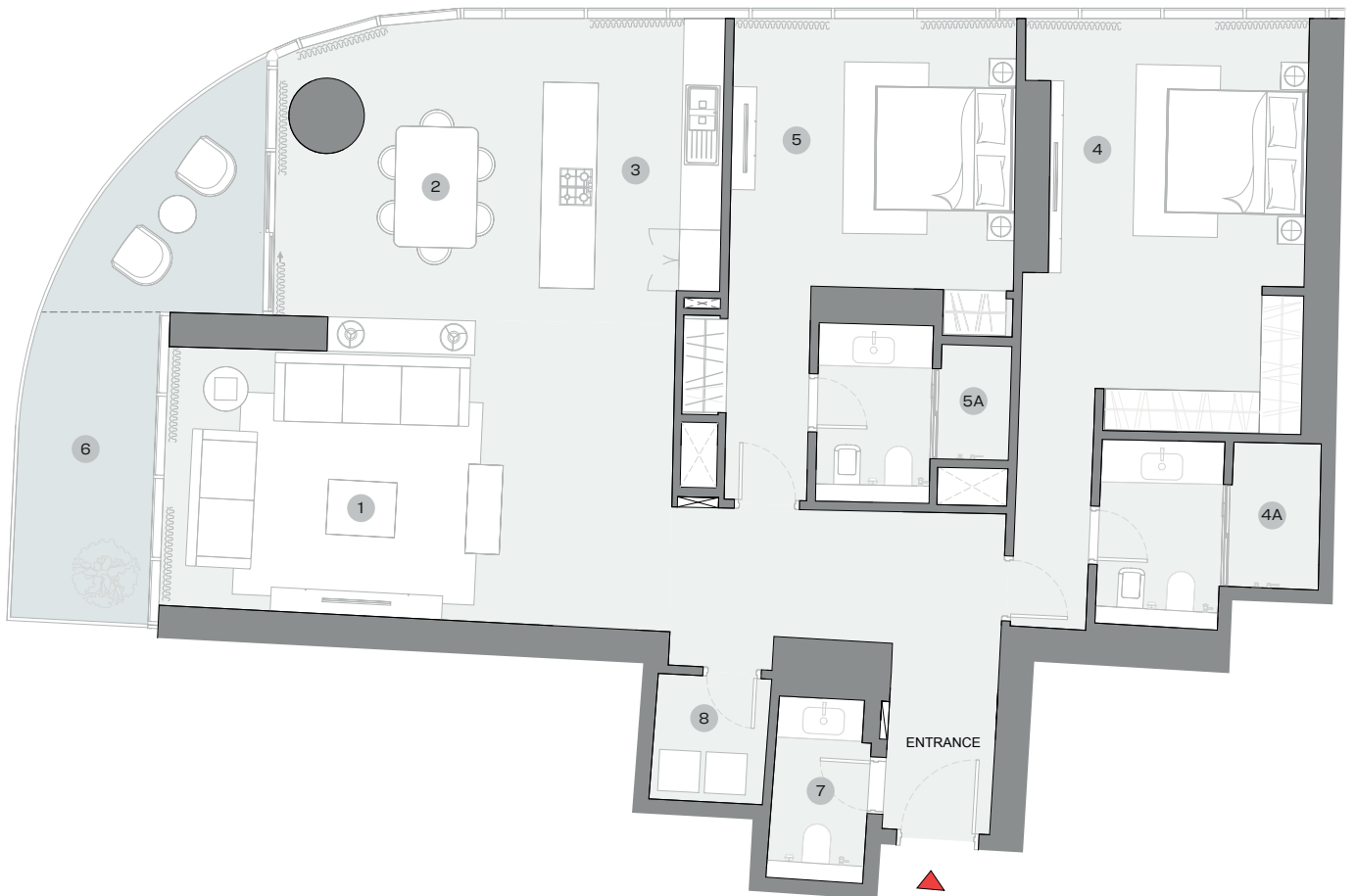
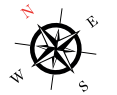
SUITE RANGE = 1,739.77 - 1,740.63 SQ.FT.

BALCONY RANGE = 187.94 - 189.65 SQ.FT.

TOTAL RANGE = 1,927.71 - 1,930.28 SQ.FT.



UNIT



List of unit numbers with this unit plan:

VIEWS

Amenities
B1004

Palm Jumeirah, Harbour, Sea

B1104, B1204, B1304, B1404, B1504, B1604, B1704, B1804, B1904, B2004, B2104, B2204, B2304, B2404, B2504, B2604, B2704, B2804, B2904, B3004, B3104, B3204

DIMENSIONS (MM)

1 LIVING - 7400 X 3850	4 MASTER BEDROOM - 3700 X 5350	6 BALCONY - 2000 X 4550
2 DINING - 4000 X 4900	4A MASTER BATHROOM - 3200 X 2700	7 POWDER - 1400 X 2650
3 KITCHEN - 2600 X 3950	5 BEDROOM 2 - 4150 X 3850	8 UTILITY - 1650 X 1850
	5A BATHROOM 2 - 2800 X 2550	

Disclaimer: 1. All dimensions are in metric, measured to wall finishes. 2. All materials, dimensions & drawings are approximate. 3. Information is subject to change without notice, at developer's absolute discretion. 4. Actual area may vary from the stated area. 5. Drawing are not to scale. 6. All images used are for illustrative purpose only and do not represent the actual size, features, specifications, fittings and furnishings. 7. The developer reserves the right to make revisions/ alterations, at its absolute discretion, without any liability whatsoever.

2 BEDROOM APARTMENT

TYPE H (with powder room + yard) VARIANT 1

TOTAL SALEABLE AREA

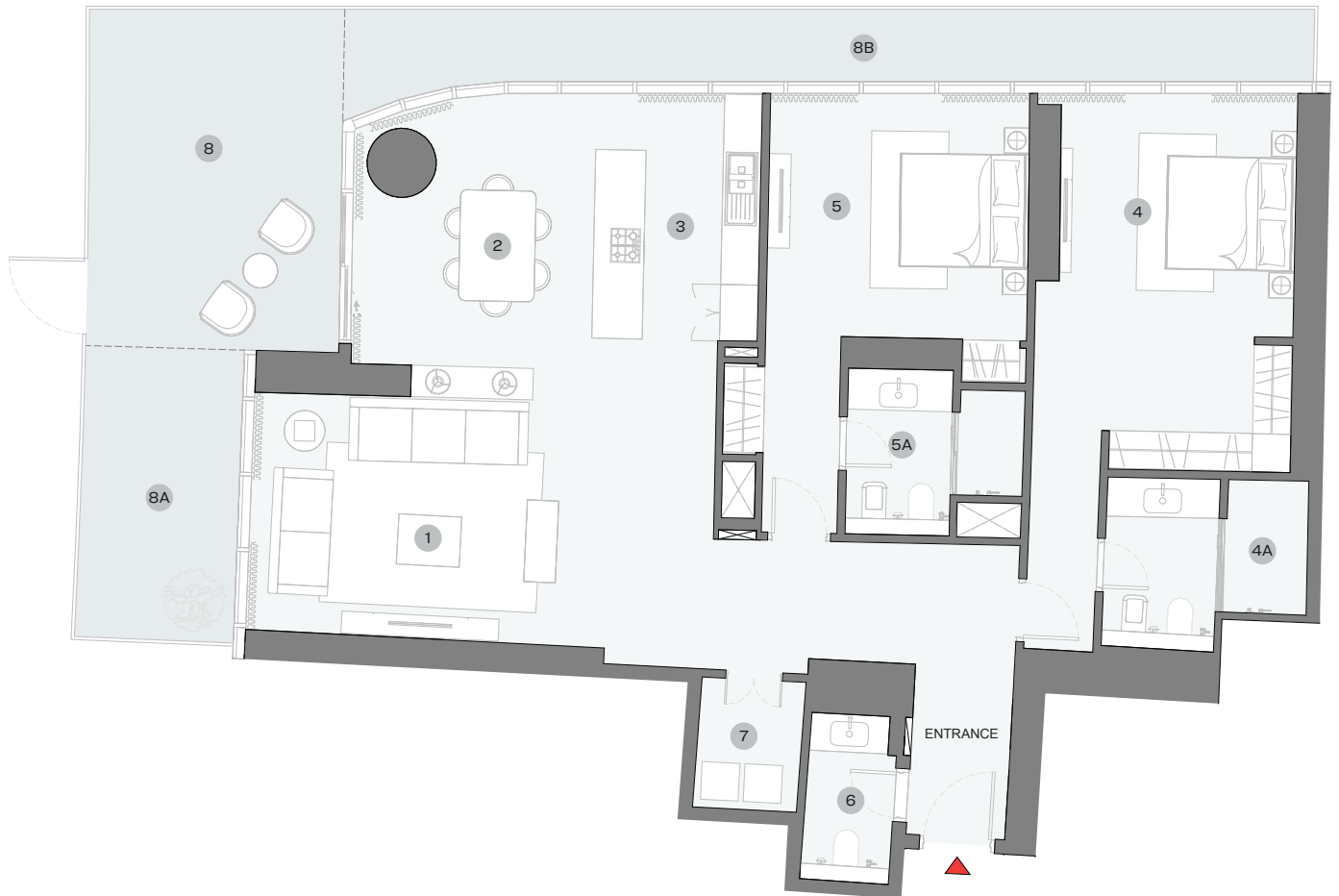
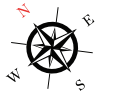
SUITE = 1,739.99 SQ.FT.

YARD = 584.16 SQ.FT.

TOTAL = 2,324.15 SQ.FT.



UNIT



DIMENSIONS (MM)

List of unit numbers with this unit plan:

VIEWS

Amenities
B904

- | | | |
|-------------------------|----------------------------------|--------------------------|
| 1 LIVING - 7400 x 3850 | 4 MASTER BEDROOM - 3700 x 5350 | 6 POWDER - 1400 x 2600 |
| 2 DINING - 4000 x 4900 | 4A MASTER BATHROOM - 3200 x 2700 | 7 UTILITY - 1650 x 2000 |
| 3 KITCHEN - 2600 x 3950 | 5 BEDROOM 2 - 4150 x 3850 | 8 YARD - 4000 x 4150 |
| | 5A BATHROOM 2 - 2800 x 2550 | 8A YARD1 - 2500 x 4650 |
| | | 8B YARD 2 - 15400 x 1200 |

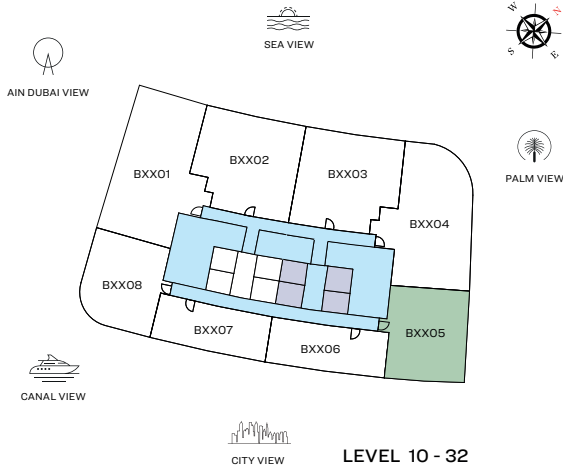
Disclaimer: 1. All dimensions are in metric, measured to wall finishes. 2. All materials, dimensions & drawings are approximate. 3. Information is subject to change without notice, at developer's absolute discretion. 4. Actual area may vary from the stated area. 5. Drawing are not to scale. 6. All images used are for illustrative purpose only and do not represent the actual size, features, specifications, fittings and furnishings. 7. The developer reserves the right to make revisions/ alterations, at its absolute discretion, without any liability whatsoever.

1 BEDROOM + STUDY APARTMENT

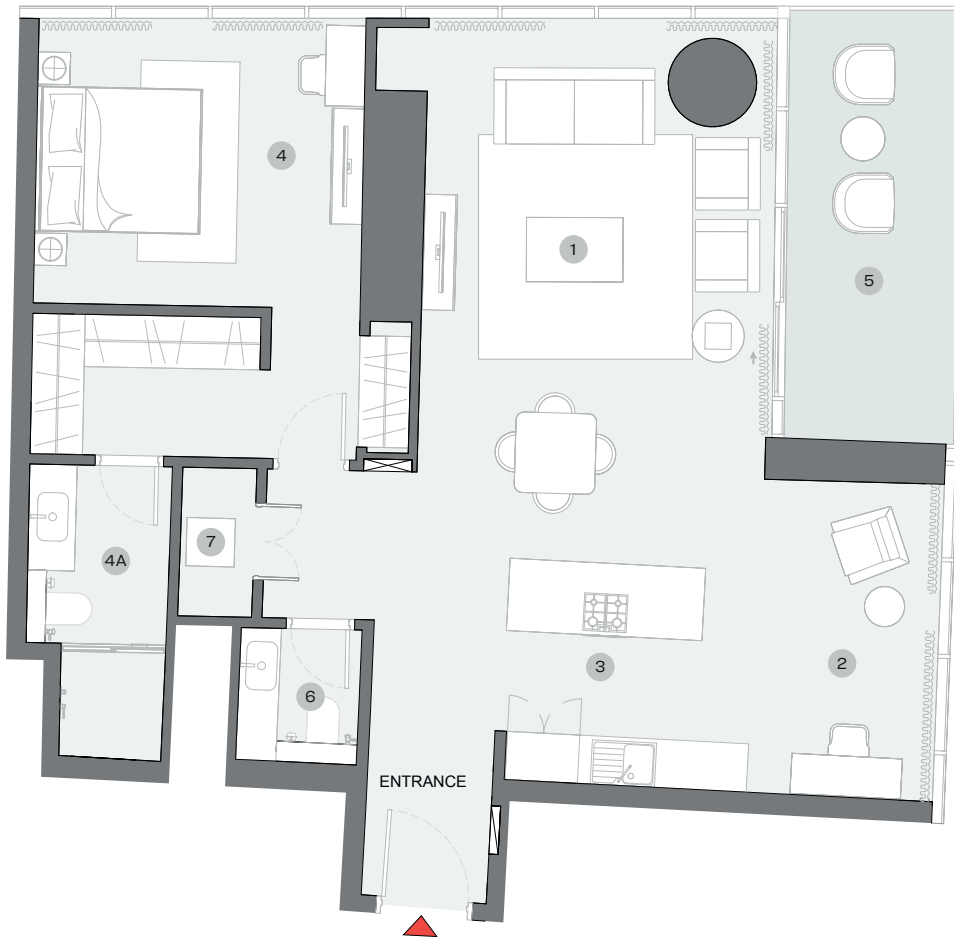
TYPE D (with powder room + balcony)

TOTAL SALEABLE AREA

SUITE RANGE = 1,102.21 - 1,109.01 SQ.FT.
 BALCONY RANGE = 131.43 - 133.04 SQ.FT.
 TOTAL RANGE = 1,233.65 - 1,242.05 SQ.FT.



UNIT



List of unit numbers with this unit plan:

VIEWS

Amenities
 B1005

Marina Skyline
 B1105, B1205, B1305, B1405, B1505, B1605, B1705, B1805, B1905,
 B2005, B2105, B2205, B2305, B2405, B2505, B2605, B2705,
 B2805, B2905, B3005, B3105, B3205

DIMENSIONS (MM)

1 LIVING/DINING - 4350 X 6700	4 BEDROOM - 4050 X 3550	5 BALCONY - 2150 X 5250
2 STUDY - 2650 X 3950	4A BATHROOM - 1800 X 3600	6 POWDER - 1500 X 1750
3 KITCHEN - 2650 X 2750	7 UTILITY - 900 X 1850	

Disclaimer: 1. All dimensions are in metric, measured to wall finishes. 2. All materials, dimensions & drawings are approximate. 3. Information is subject to change without notice, at developer's absolute discretion. 4. Actual area may vary from the stated area. 5. Drawing are not to scale. 6. All images used are for illustrative purpose only and do not represent the actual size, features, specifications, fittings and furnishings. 7. The developer reserves the right to make revisions/ alterations, at its absolute discretion, without any liability whatsoever.

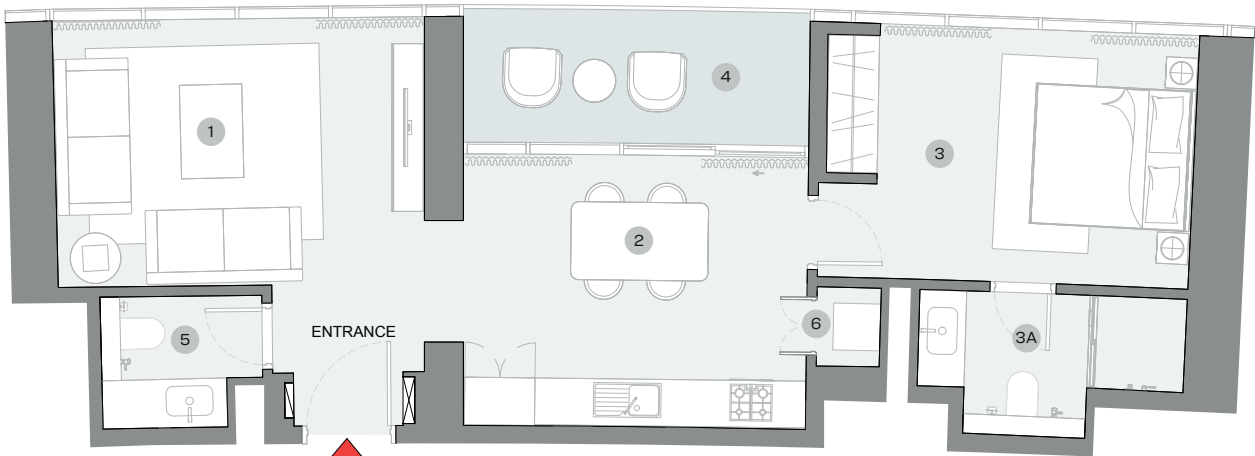
1 BEDROOM APARTMENT

TYPE E (with powder room + balcony)

TOTAL SALEABLE AREA
 SUITE = 748.85 - 748.95 SQ.FT.
 BALCONY RANGE = 91.82 - 92.57 SQ.FT.
 TOTAL RANGE = 840.77 - 841.42 SQ.FT.



UNIT



List of unit numbers with this unit plan:

VIEWS

Amenities
 B1006

Marina Skyline
 B1106, B1206, B1306, B1406, B1506, B1606, B1706, B1806, B1906,
 B2006, B2106, B2206, B2306, B2406, B2506, B2606, B2706,
 B2806, B2906, B3006, B3106, B3206

DIMENSIONS (MM)

1 LIVING - 4700 X 3450	3 BEDROOM - 4000 X 3250	4 BALCONY - 4650 X 1700
2 KITCHEN/DINING - 4400 X 3500	3A BATHROOM - 3400 X 1850	5 POWDER - 2050 X 1700
		6 UTILITY - 800 X 1000

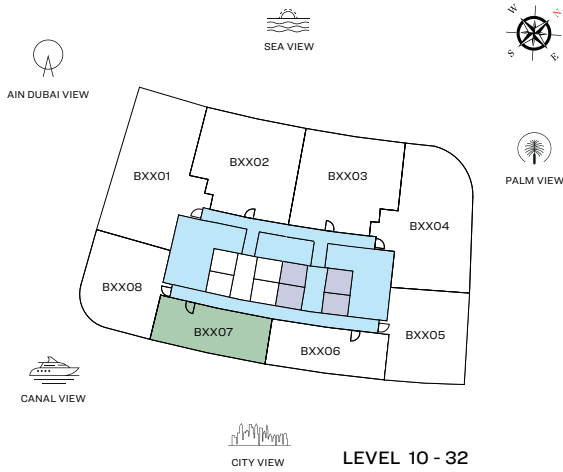
Disclaimer: 1. All dimensions are in metric, measured to wall finishes. 2. All materials, dimensions & drawings are approximate. 3. Information is subject to change without notice, at developer's absolute discretion. 4. Actual area may vary from the stated area. 5. Drawing are not to scale. 6. All images used are for illustrative purpose only and do not represent the actual size, features, specifications, fittings and furnishings. 7. The developer reserves the right to make revisions/ alterations, at its absolute discretion, without any liability whatsoever.

1 BEDROOM APARTMENT

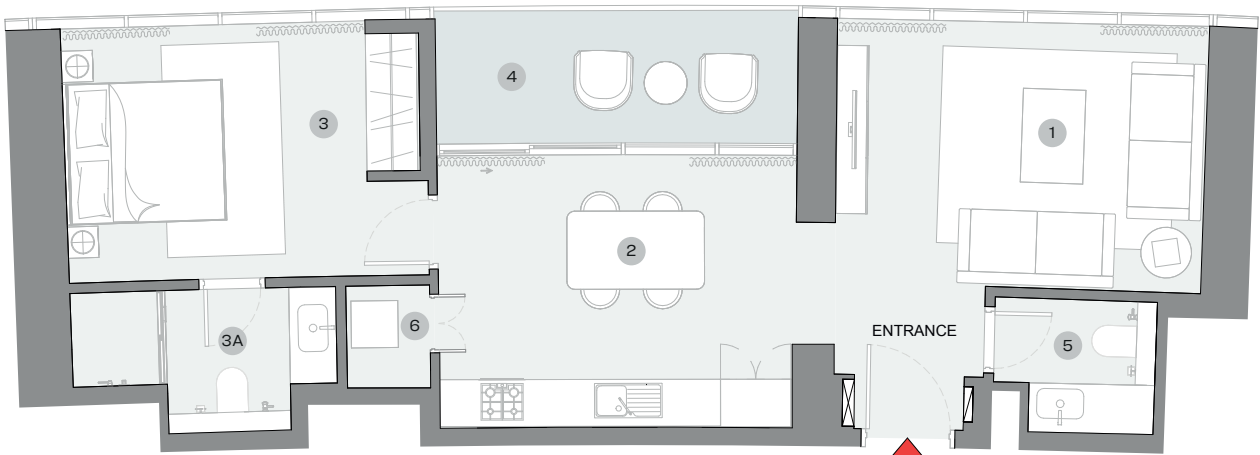
TYPE F (with powder room + balcony)

TOTAL SALEABLE AREA

SUITE RANGE = 754.38 - 754.55 SQ.FT.
 BALCONY RANGE = 95.58 - 96.23 SQ.FT.
 TOTAL RANGE = 850.13 - 850.61 SQ.FT.



UNIT



List of unit numbers with this unit plan:

VIEWS

Amenities
 B1007

Marina Skyline
 B1107, B1207, B1307, B1407, B1507, B1607, B1707, B1807, B1907,
 B2007, B2107, B2207, B2307, B2407, B2507, B2607, B2707,
 B2807, B2907, B3007, B3107, B3207

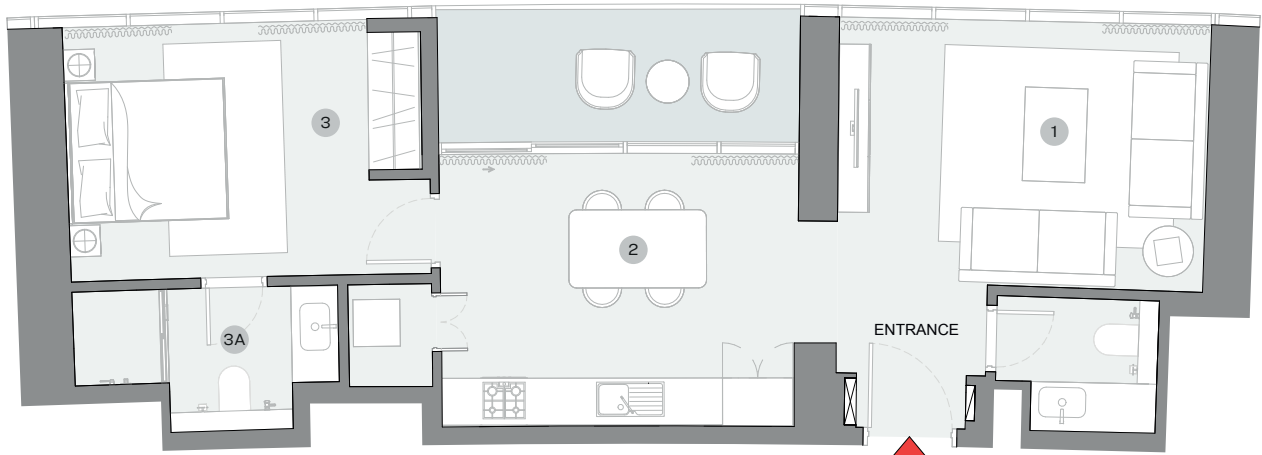
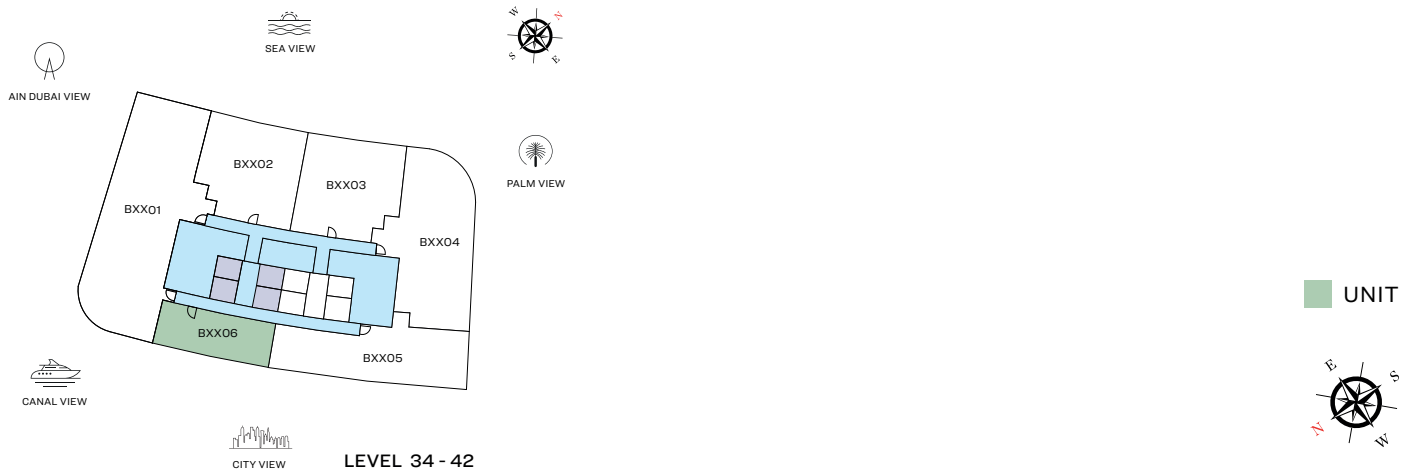
DIMENSIONS (MM)

1 LIVING - 4750 X 3400	3 BEDROOM - 3850 X 3250	4 BALCONY - 4650 X 1700
2 KITCHEN/DINING - 4550 X 3500	3A BATHROOM - 3400 X 1850	5 POWDER - 2100 X 1750
		6 UTILITY - 1050 X 1300

Disclaimer: 1. All dimensions are in metric, measured to wall finishes. 2. All materials, dimensions & drawings are approximate. 3. Information is subject to change without notice, at developer's absolute discretion. 4. Actual area may vary from the stated area. 5. Drawing are not to scale. 6. All images used are for illustrative purpose only and do not represent the actual size, features, specifications, fittings and furnishings. 7. The developer reserves the right to make revisions/ alterations, at its absolute discretion, without any liability whatsoever.

1 BEDROOM APARTMENT

TYPE F (with powder room + balcony)



List of unit numbers with this unit plan:

VIEWS

Marina Skyline, Marina

B3406, B3506, B3606, B3706, B3806, B3906, B4006, B4106, B4206

Disclaimer: 1. All dimensions are in metric, measured to wall finishes. 2. All materials, dimensions & drawings are approximate. 3. Information is subject to change without notice, at developer's absolute discretion. 4. Actual area may vary from the stated area. 5. Drawing are not to scale. 6. All images used are for illustrative purpose only and do not represent the actual size, features, specifications, fittings and furnishings. 7. The developer reserves the right to make revisions/ alterations, at its absolute discretion, without any liability whatsoever.

1 BEDROOM APARTMENT

TYPE F (with powder room + balcony)

AREAS & DIMENSIONS

UNIT NO. B3406	UNIT NO. B3506	UNIT NO. B3606	UNIT NO. B3706
SUITE = 754.23 SQ.FT. BALCONY = 95.15 SQ.FT. TOTAL = 849.38 SQ.FT.	SUITE = 754.23 SQ.FT. BALCONY = 95.15 SQ.FT. TOTAL = 849.38 SQ.FT.	SUITE = 754.23 SQ.FT. BALCONY = 95.15 SQ.FT. TOTAL = 849.38 SQ.FT.	SUITE = 754.23 SQ.FT. BALCONY = 95.15 SQ.FT. TOTAL = 849.38 SQ.FT.

DESCRIPTION	DIMENSIONS (MM)	DIMENSIONS (MM)	DIMENSIONS (MM)	DIMENSIONS (MM)
1 LIVING ROOM	4650X3350	4650X3350	4650X3350	4650X3350
2 KITCHEN/DINING ROOM	4350X3450	4350X3450	4350X3450	4350X3450
3 MASTER BEDROOM	3850X3200	3850X3200	3850X3200	3850X3200
3A M. BEDROOM BATHROOM	3350X1800	3350X1800	3350X1800	3350X1800

UNIT NO. B3806	UNIT NO. B3906	UNIT NO. B4006	UNIT NO. B4106	UNIT NO. B4206
SUITE = 754.23 SQ.FT. BALCONY = 95.15 SQ.FT. TOTAL = 849.38 SQ.FT.	SUITE = 754.23 SQ.FT. BALCONY = 95.15 SQ.FT. TOTAL = 849.38 SQ.FT.	SUITE = 754.23 SQ.FT. BALCONY = 95.15 SQ.FT. TOTAL = 849.38 SQ.FT.	SUITE = 754.23 SQ.FT. BALCONY = 95.15 SQ.FT. TOTAL = 849.38 SQ.FT.	SUITE = 751.86 SQ.FT. BALCONY = 95.48 SQ.FT. TOTAL = 847.34 SQ.FT.

DESCRIPTION	DIMENSIONS (MM)	DIMENSIONS (MM)	DIMENSIONS (MM)	DIMENSIONS (MM)	DIMENSIONS (MM)
1 LIVING ROOM	4650X3350	4650X3350	4650X3350	4650X3350	4650X3350
2 KITCHEN/DINING ROOM	4350X3450	4350X3450	4350X3450	4350X3450	4350X3450
3 MASTER BEDROOM	3850X3200	3850X3200	3850X3200	3850X3200	3850X3200
3A M. BEDROOM BATHROOM	3350X1800	3350X1800	3350X1800	3350X1800	3350X1800

1 BEDROOM APARTMENT

TYPE F (with powder room + yard) VARIANT 1

TOTAL SALEABLE AREA

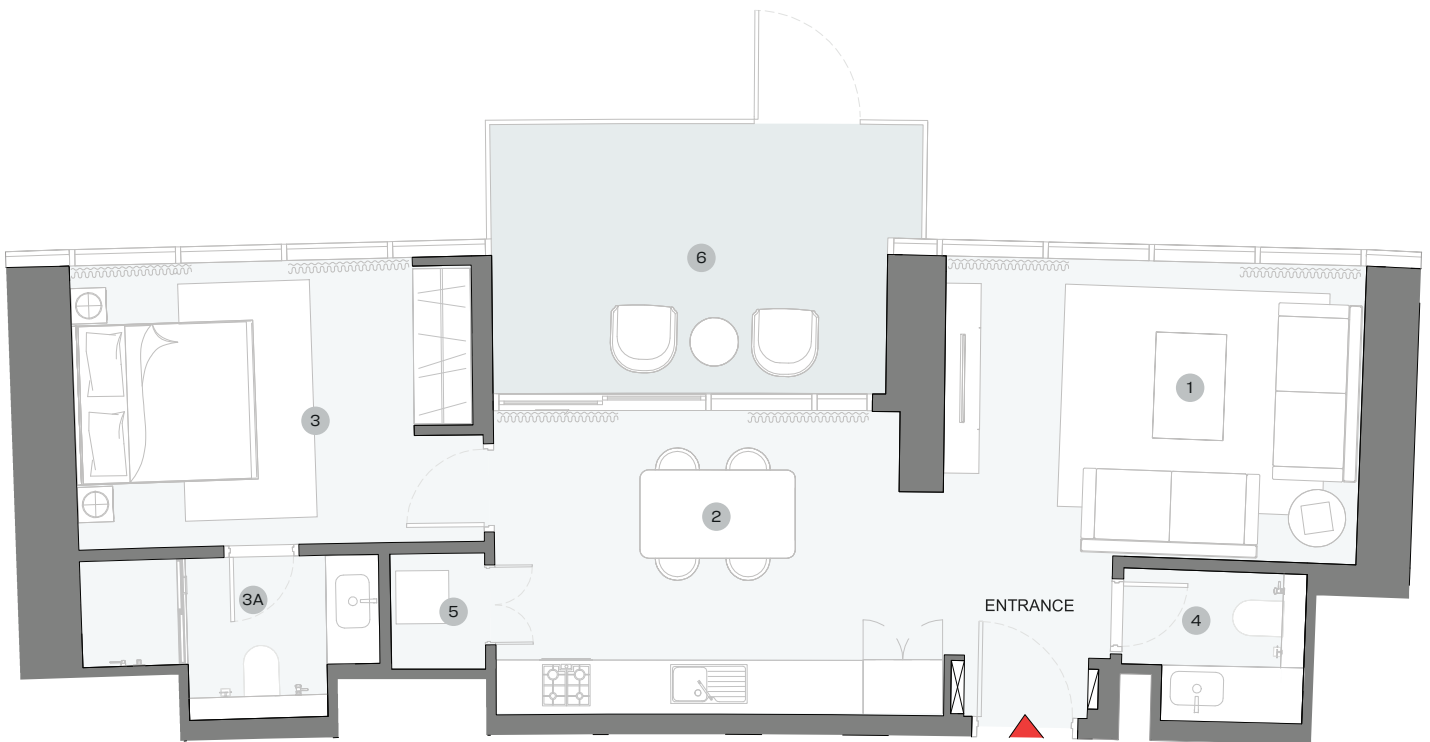
SUITE = 754.44 SQ.FT.

YARD = 166.41 SQ.FT.

TOTAL = 920.85 SQ.FT.



UNIT



List of unit numbers with this unit plan:

VIEWS

Amenities
B906

DIMENSIONS (MM)

- | | | |
|--------------------------------|----------------------------------|-------------------------|
| 1 LIVING - 4750 x 3400 | 3 MASTER BEDROOM - 3850 x 3250 | 4 POWDER - 2100 x 1750 |
| 2 DINING/KITCHEN - 4550 x 3500 | 3A MASTER BATHROOM - 3400 x 1850 | 5 UTILITY - 1050 x 1300 |
| | | 6 YARD - 4500 x 3050 |

Disclaimer: 1. All dimensions are in metric, measured to wall finishes. 2. All materials, dimensions & drawings are approximate. 3. Information is subject to change without notice, at developer's absolute discretion. 4. Actual area may vary from the stated area. 5. Drawing are not to scale. 6. All images used are for illustrative purpose only and do not represent the actual size, features, specifications, fittings and furnishings. 7. The developer reserves the right to make revisions/ alterations, at its absolute discretion, without any liability whatsoever.

1 BEDROOM + STUDY APARTMENT

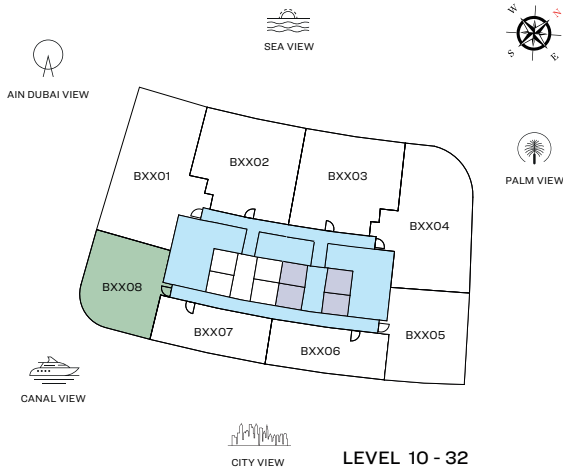
TYPE G (with powder room + balcony)

TOTAL SALEABLE AREA

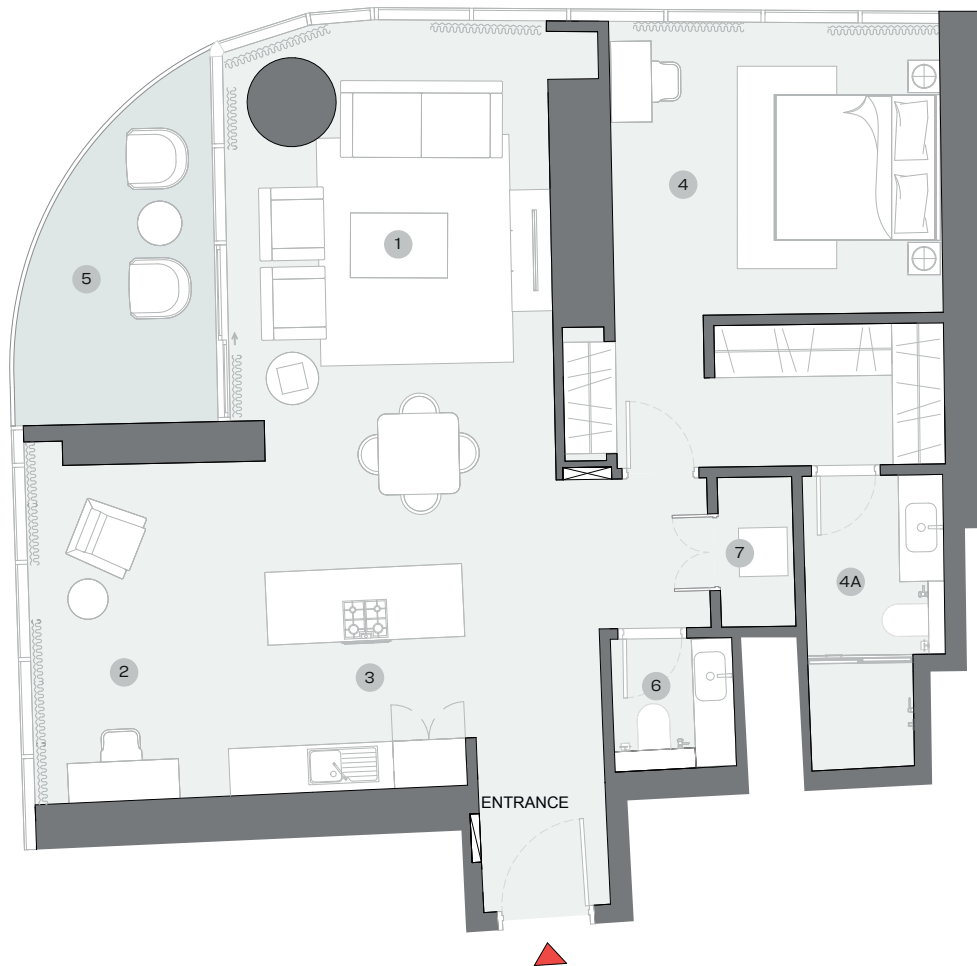
SUITE RANGE = 1,086.51 - 1,090.17 SQ.FT.

BALCONY RANGE = 103.12 - 104.15 SQ.FT.

TOTAL RANGE = 1,190.62 - 1,193.29 SQ.FT.



UNIT



List of unit numbers with this unit plan:

VIEWS

Amenities
B1008

Marina, Marina Skyline, Sea

B1108, B1208, B1308, B1408, B1508, B1608, B1708, B1808, B1908,
B2008, B2108, B2208, B2308, B2408, B2508, B2608, B2708,
B2808, B2908, B3008, B3108, B3208

DIMENSIONS (MM)

1 LIVING/DINING - 4000 X 6650	4 BEDROOM - 4100 X 3550	5 BALCONY
2 STUDY - 2650 X 4100	4A BATHROOM - 1750 X 3600	6 POWDER - 1500 X 1600
3 KITCHEN - 2650 X 2700		7 UTILITY - 900 X 1850

Disclaimer: 1. All dimensions are in metric, measured to wall finishes. 2. All materials, dimensions & drawings are approximate. 3. Information is subject to change without notice, at developer's absolute discretion. 4. Actual area may vary from the stated area. 5. Drawing are not to scale. 6. All images used are for illustrative purpose only and do not represent the actual size, features, specifications, fittings and furnishings. 7. The developer reserves the right to make revisions/ alterations, at its absolute discretion, without any liability whatsoever.

1 BEDROOM + STUDY APARTMENT

TYPE G (with powder room + yard) VARIANT 1

TOTAL SALEABLE AREA

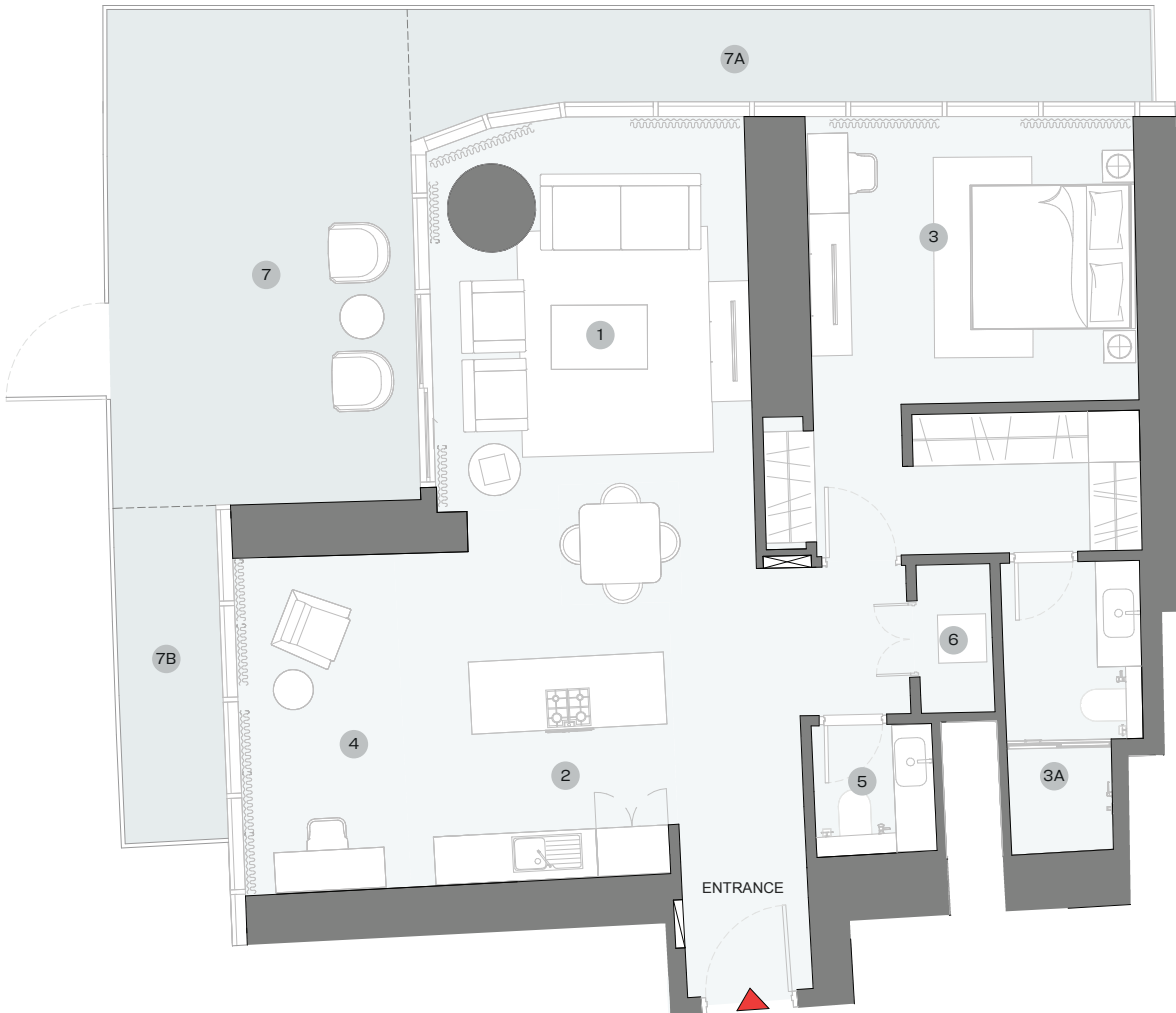
SUITE = 1,088.55 SQ.FT.

YARD = 456.17 SQ.FT.

TOTAL = 1,544.72 SQ.FT.



UNIT



List of unit numbers with this unit plan:

VIEWS

Amenities
B907

DIMENSIONS (MM)

1 LIVING/DINING - 4000 x 6650	3 MASTER BEDROOM - 4100 x 3550	6 UTILITY - 900 x 1850
2 KITCHEN - 2650 x 2700	3A MASTER BATHROOM - 1750 x 3600	7 YARD 1 - 3800 x 4950
	4 STUDY - 2650 x 4100	7A YARD 2 - 9250 x 1200
	5 POWDER - 1500 x 1600	7B YARD 3 - 1300 x 4150

Disclaimer: 1. All dimensions are in metric, measured to wall finishes. 2. All materials, dimensions & drawings are approximate. 3. Information is subject to change without notice, at developer's absolute discretion. 4. Actual area may vary from the stated area. 5. Drawing are not to scale. 6. All images used are for illustrative purpose only and do not represent the actual size, features, specifications, fittings and furnishings. 7. The developer reserves the right to make revisions/ alterations, at its absolute discretion, without any liability whatsoever.

SOBHA
REALTY