

SHD
STONEHENGE
by **SEGREX**



- YOUR
- EVERYDAY
- *HOLIDAY*
- DESTINATION



LIVE IN SERENITY

- Segrex homes are designed to inspire. Our vision is to create living spaces that add value and contentment every day, supporting people as they journey towards their dreams and aspirations. Built in thoughtfully selected locations to ensure superb long-term return on investment
- From design to delivery, our team curates every aspect of the construction, ensuring that we continue to meet our promise and commit to our long-term responsibility to our customers.
- We believe in creating spaces that enable people to live better lives, which is why we craft homes with meticulous attention to every last detail.



JUMEIRAH VILLAGE CIRCLE

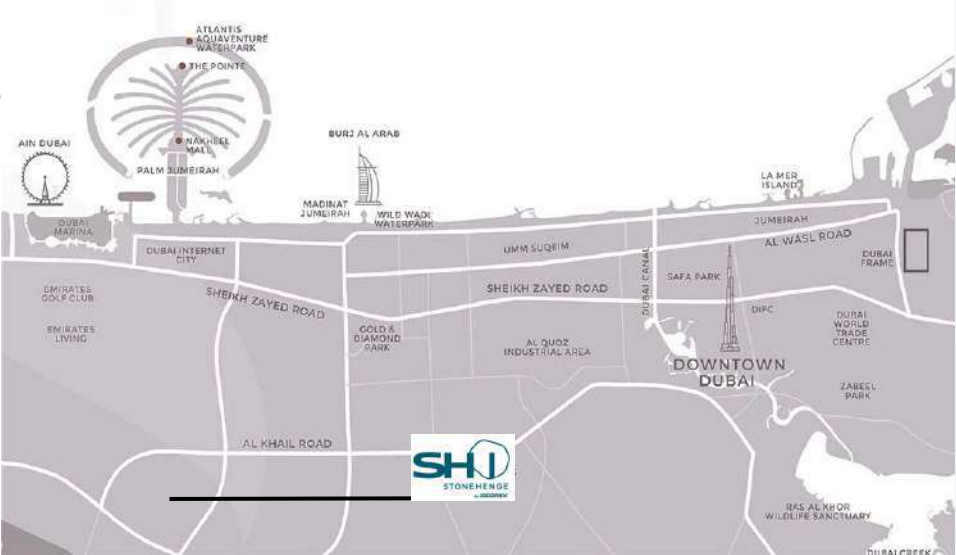
Jumeirah Village Circle is a tranquil, serene community situated in the heart of Dubai and is close to all the major attractions and amenities the city has to offer.

The neighborhood is also home to a number of parks and schools with a selection of entertainment and leisure options. Adding to its strategic location is a mix of multi-family residential complexes that are perfect for families and residents looking for a quiet shelter from the hustle and bustle of the city.





YOUR HOME IN A PEACEFUL NEIGHBORHOOD



2 Minutes
Circle Mall

7 Minutes
Dubai Hills Mall

10 Minutes
Mall of the Emirates

10 Minutes
Dubai Marina

12 Minutes
Ain Dubai

15 Minutes
Downtown Dubai
& Burj Khalifa

15 Minutes
Burj Al Arab

18 Minutes
Palm Jumeirah

20 Minutes
Jumeirah Beach

20 Minutes
Museum of the Future

28 Minutes
Dubai World Central

30 Minutes
Dubai International
Airport



STONEHENGE



STONEHENGE

STONEHENGE



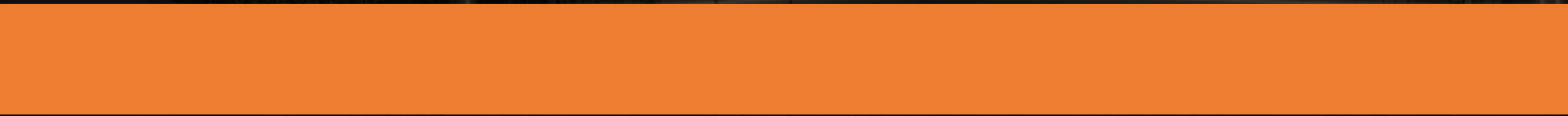
STONEHENGE

Louise





STONEHENGE



STONEHENGE

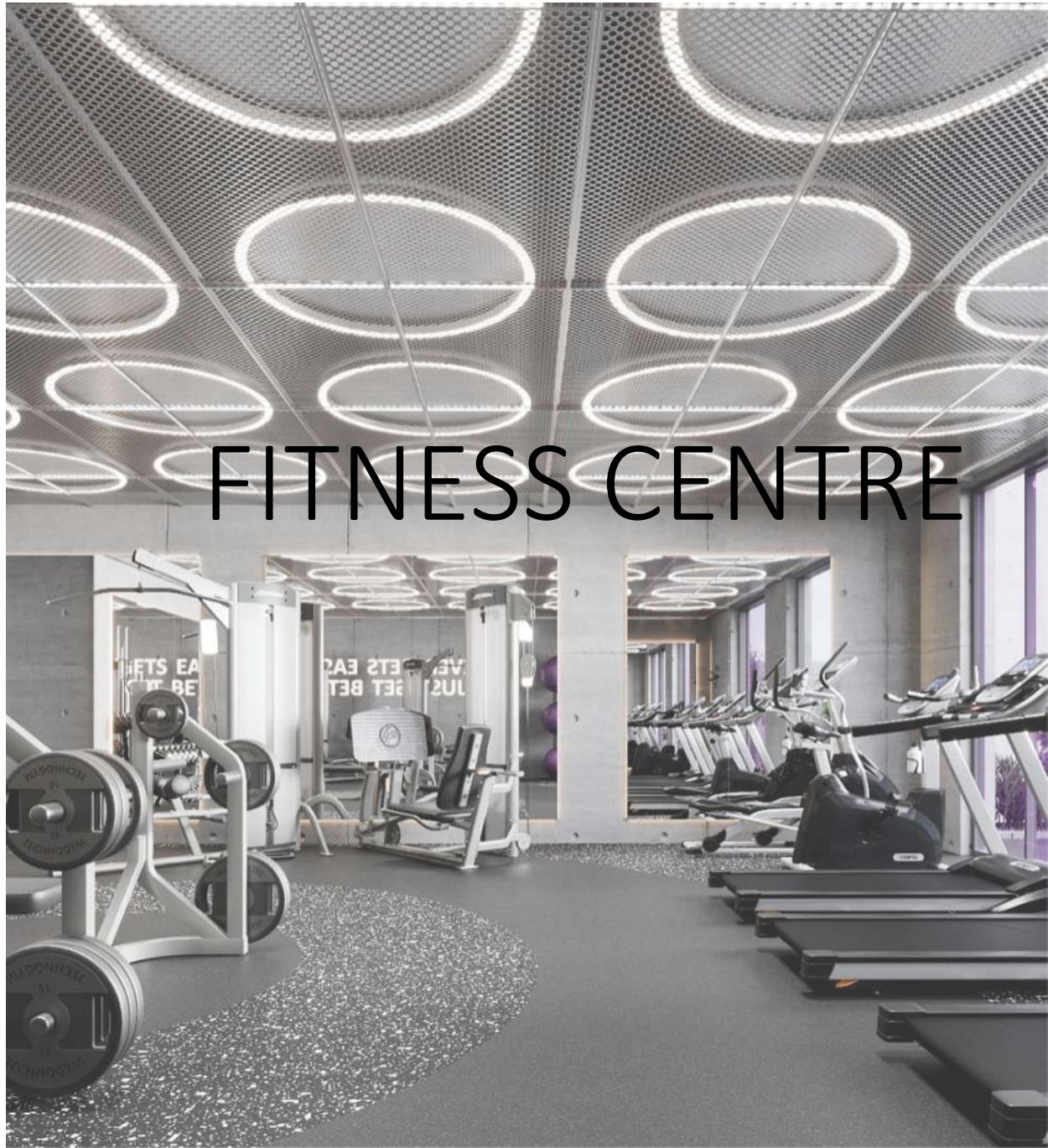
Lobby & Lounge





Lobby & Lounge

FITNESS CENTRE





FITNESS CENTRE

it never gets easier
you just get better

The image shows a wide-angle view of a fitness center. The ceiling is a grid of circular perforated metal panels, each containing a glowing white ring light. The floor is dark grey with a speckled pattern. In the foreground, there is a silver and black exercise machine. In the background, several treadmills are lined up, and a rack of dumbbells is visible. A purple exercise ball is on the wall.



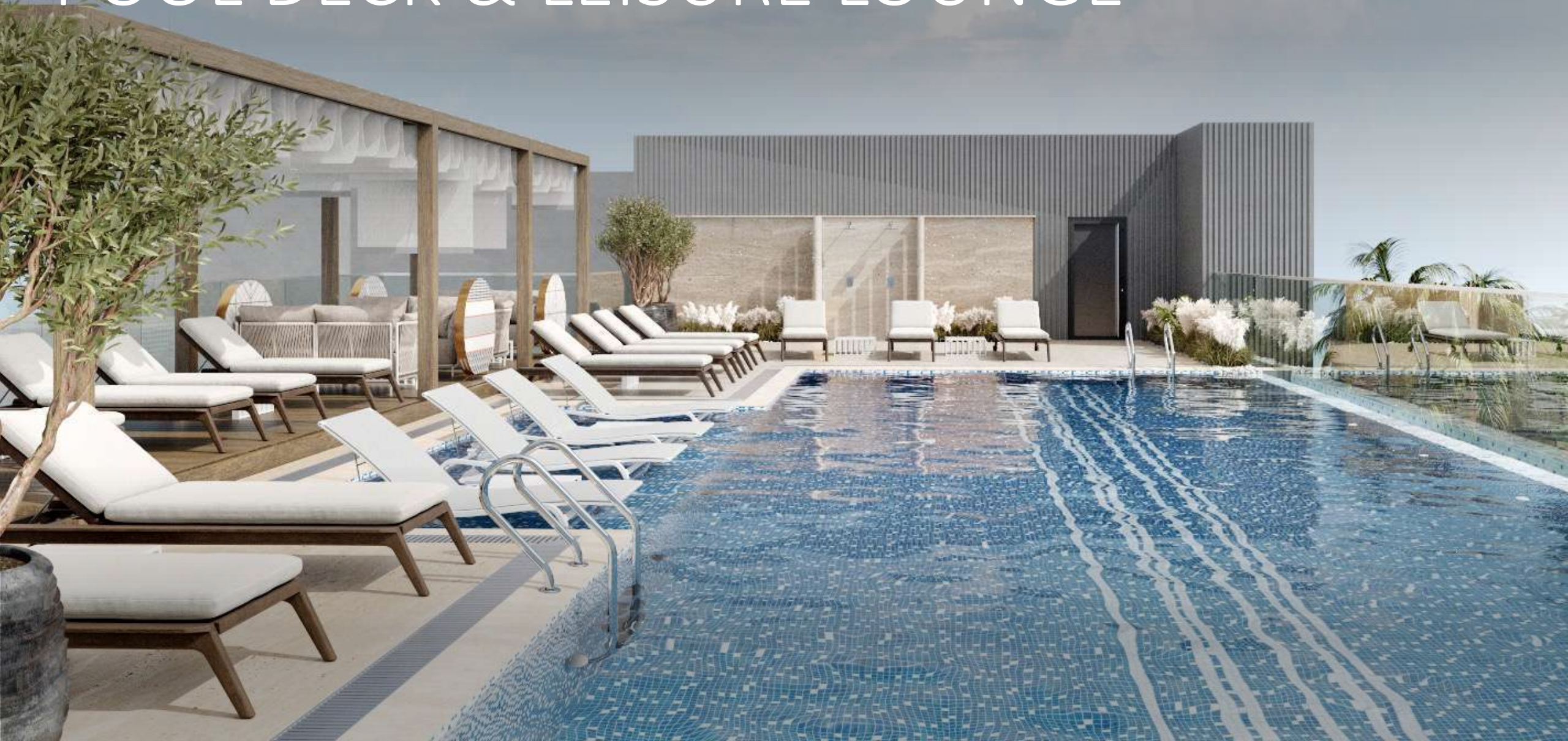
IT NEVER GETS EASIER
YOU JUST GET BETTER

The image shows a closer view of the fitness center. The ceiling is the same as in the first image. The floor is dark grey with a speckled pattern. In the foreground, there are several black exercise mats and a purple exercise ball. In the background, there are purple exercise balls hanging from the ceiling. A concrete wall features a motivational quote in white capital letters.

POOL DECK & LEISURE LOUNGE



POOL DECK & LEISURE LOUNGE

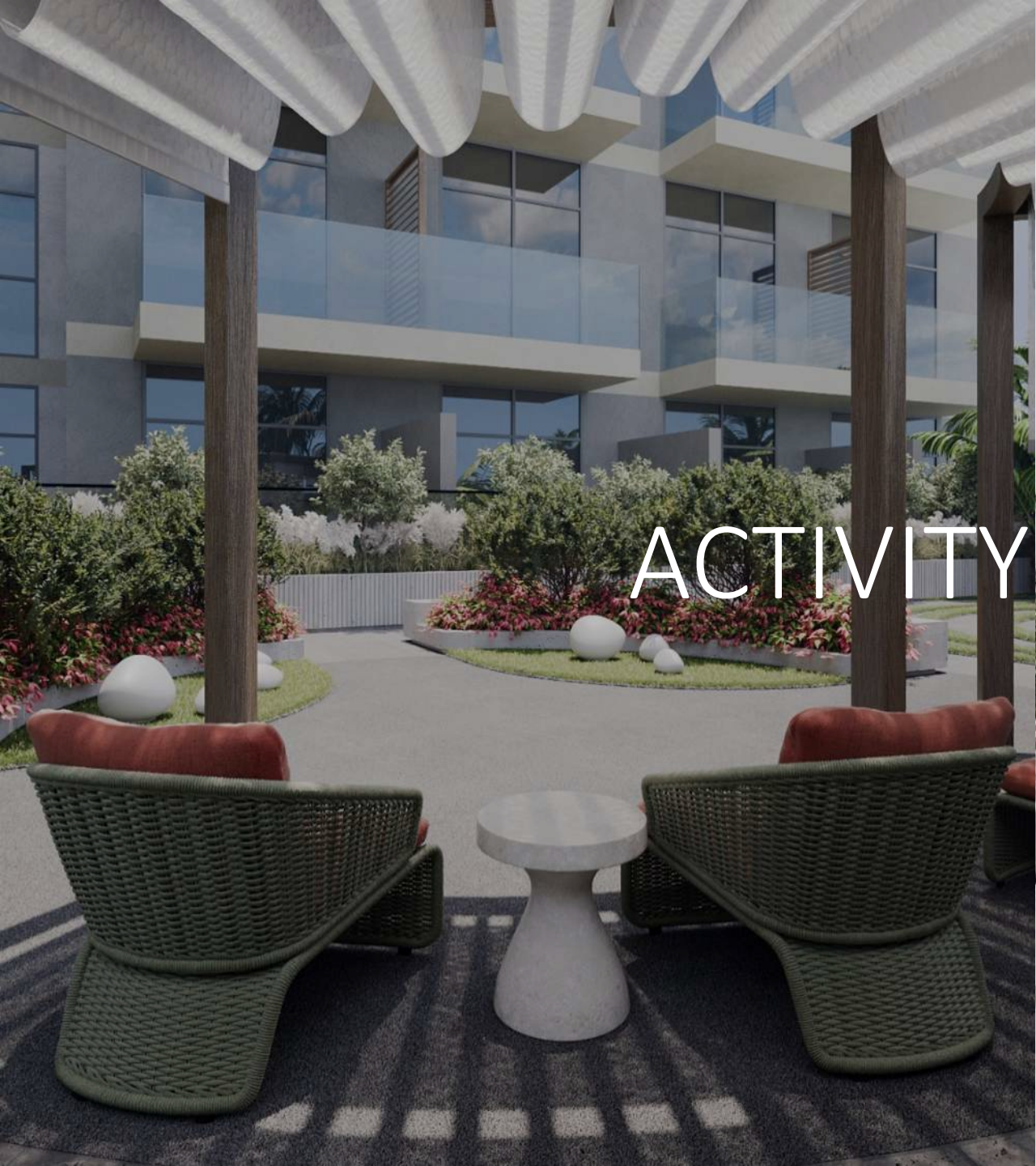




POOL DECK & LEISURE LOUNGE

A modern architectural rendering of an outdoor activity garden. The scene features a paved courtyard with a large, curved concrete planter in the foreground containing dense green shrubs and red flowers. To the right, a wooden pergola structure with a white canopy provides shade over a seating area with green wicker chairs and orange cushions. In the background, a multi-story building with glass balconies and a central fountain area are visible under a bright sky. The overall design is clean and contemporary.

ACTIVITY GARDEN



ACTIVITY GARDEN



A modern, multi-story building with large glass windows and balconies. In the foreground, there is a courtyard area with a fountain featuring several silver spheres. The courtyard is landscaped with various plants, including a large palm tree on the left and a curved concrete planter with colorful flowers. The text "ACTIVITY GARDEN" is overlaid in the center of the image.

ACTIVITY GARDEN

STUDIOS FROM 441.43 SQ FT TO 683.08 SQ FT

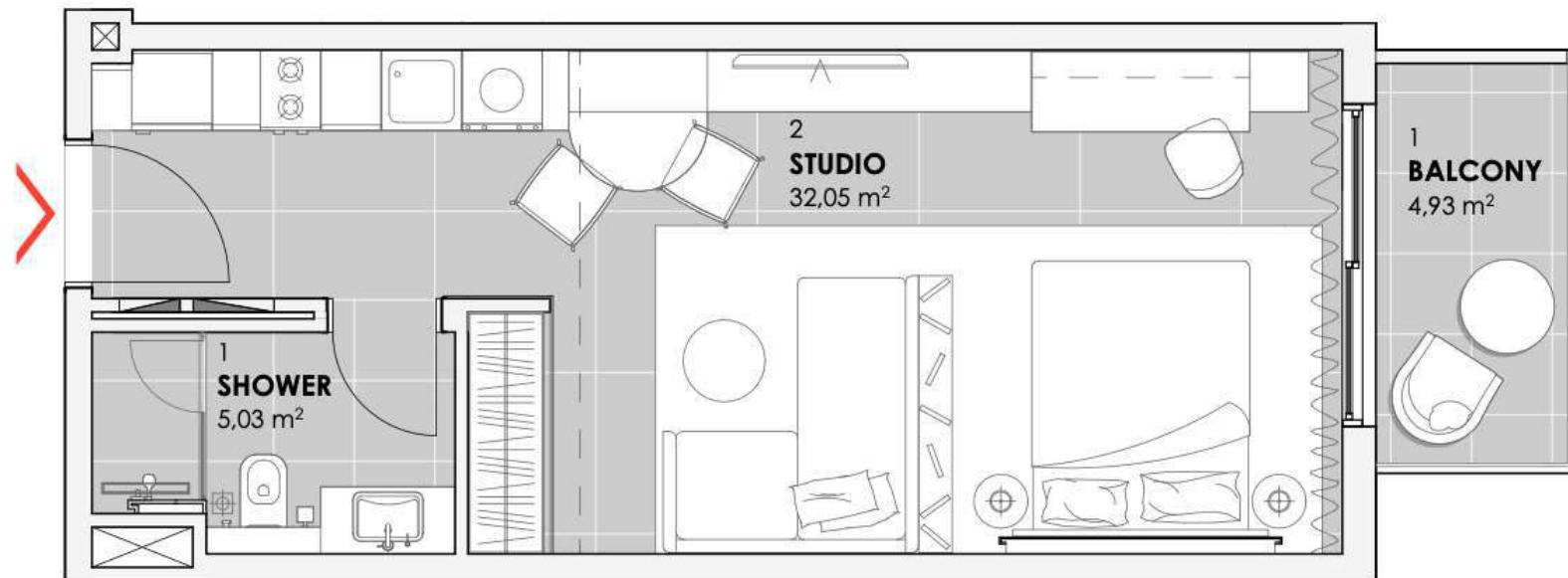
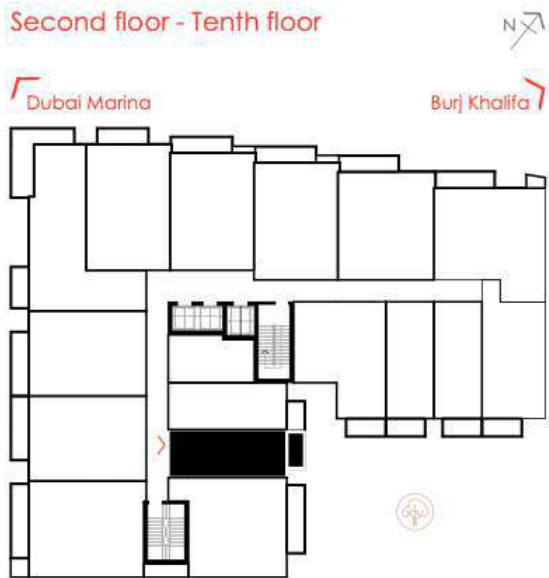
STUDIO APARTMENT TYPE A

Apt. no. 215, 315, 415, 515, 615, 715, 815, 915, 1010

Second floor - Tenth floor

Dubai Marina

Burj Khalifa



STUDIOS FROM 441.43 SQ FT TO 683.08 SQ FT

STUDIO APARTMENT TYPE B

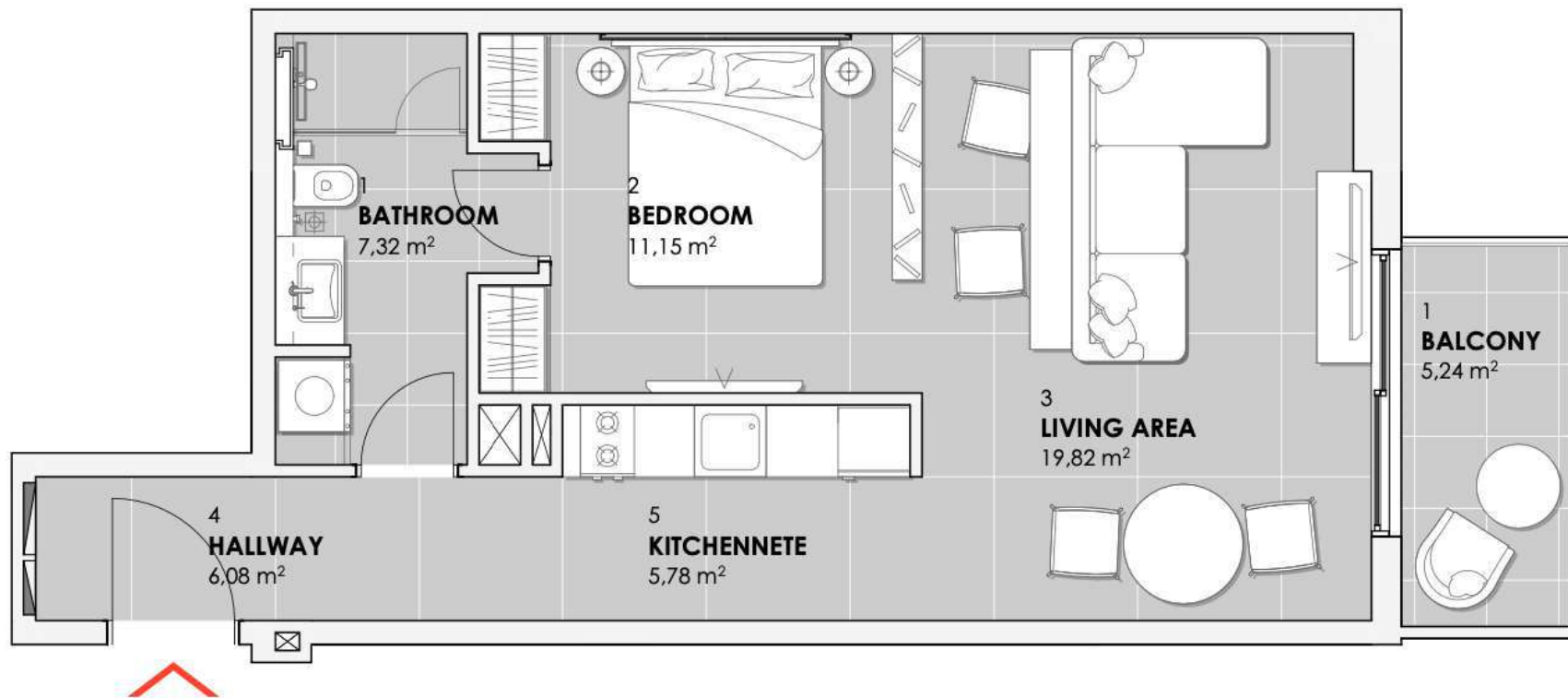
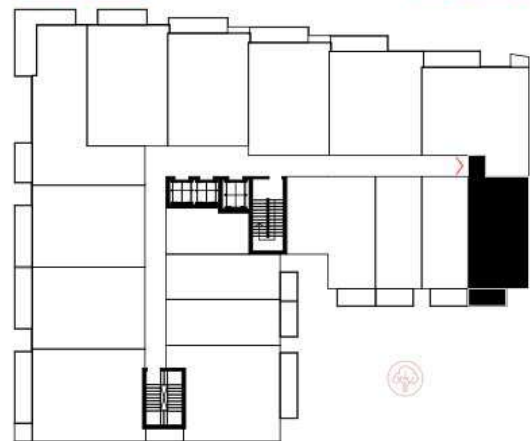
Apt. no. 204, 304, 404, 504, 604, 704, 804, 904, 1004

Second floor - Tenth floor



Dubai Marina

Burj Khalifa



STUDIO



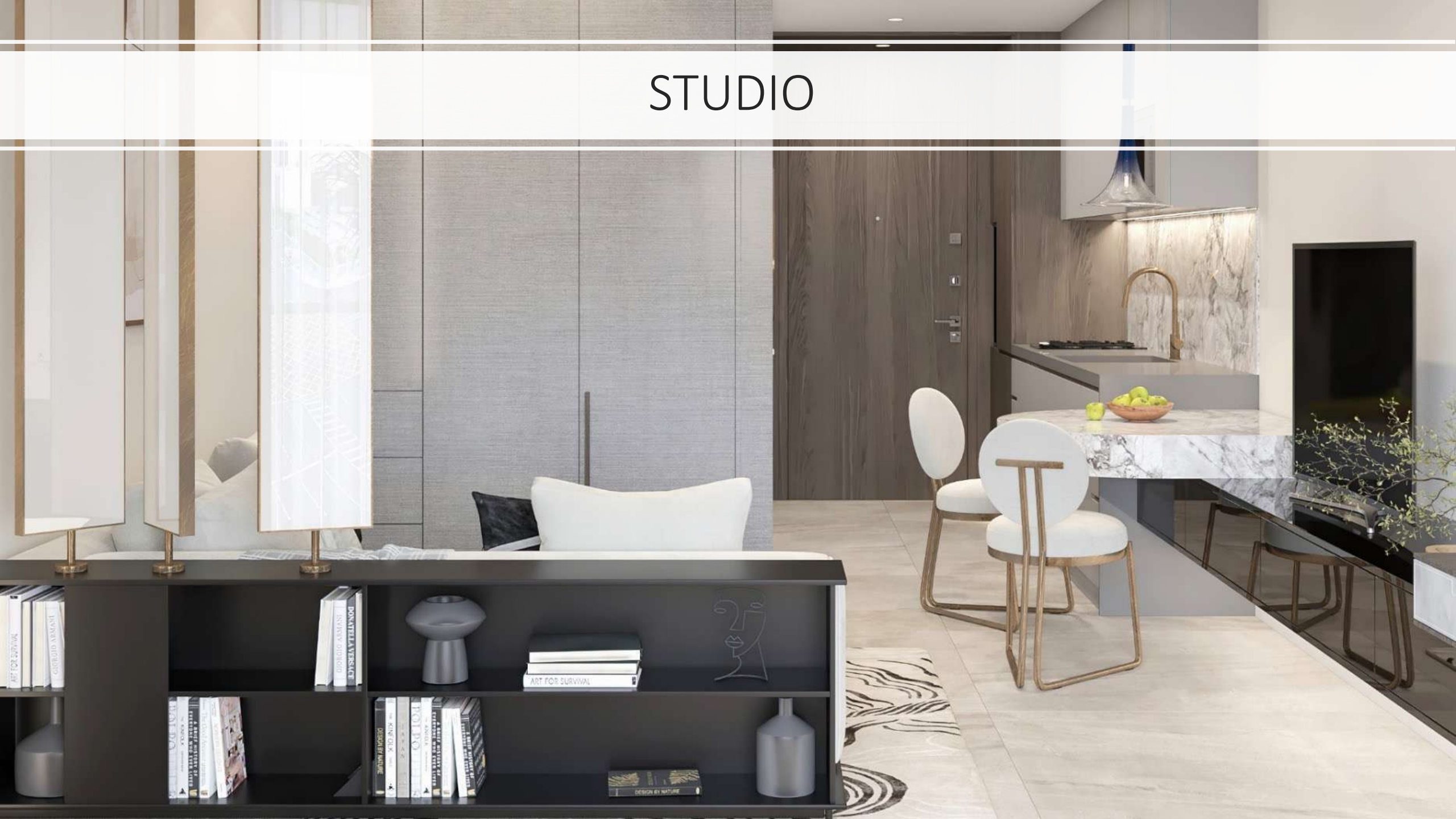
STUDIO



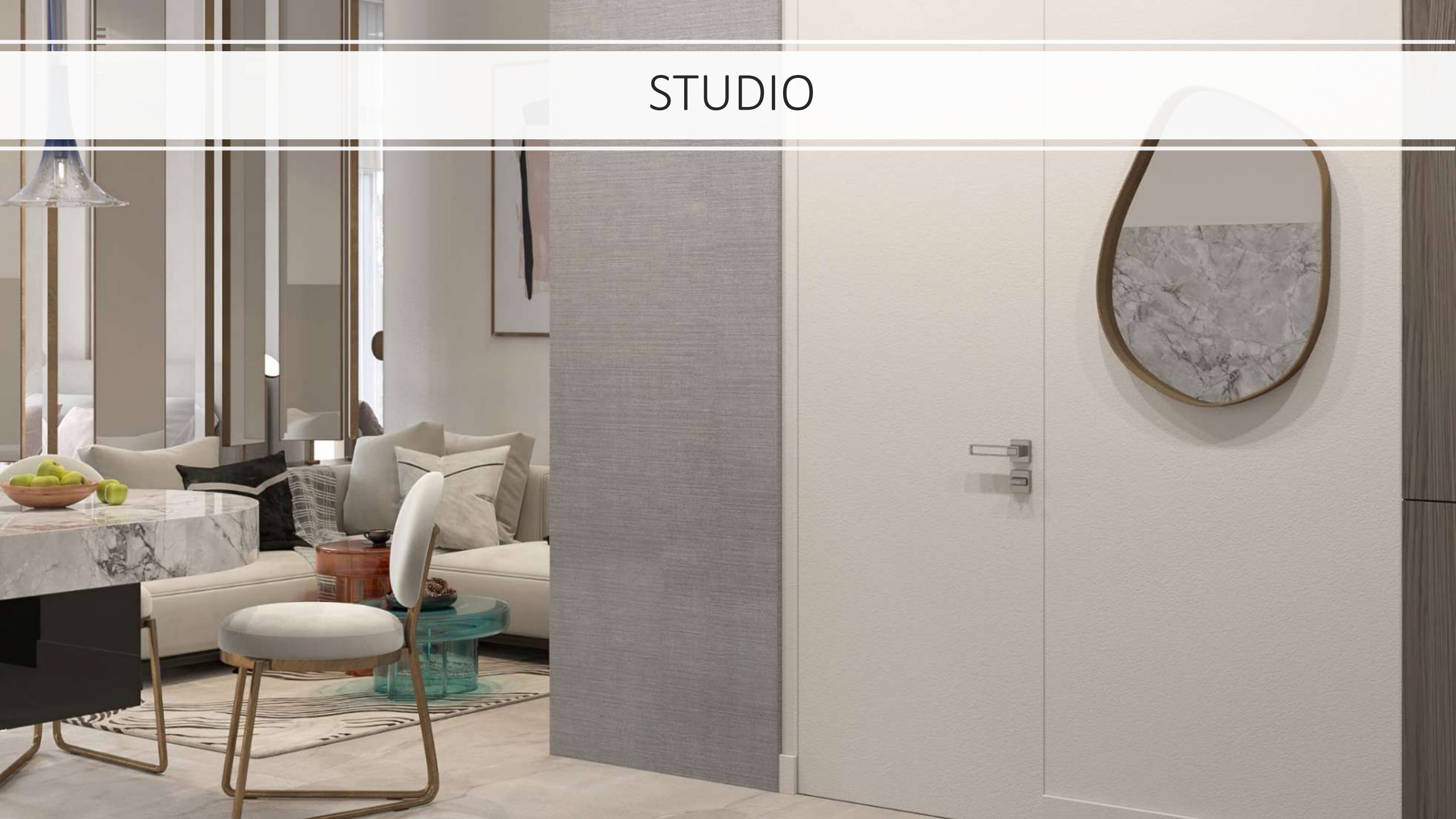
STUDIO



STUDIO



STUDIO



STUDIO



ONE BEDROOM FROM 691.80 SQ FT TO 1020.10 SQ FT

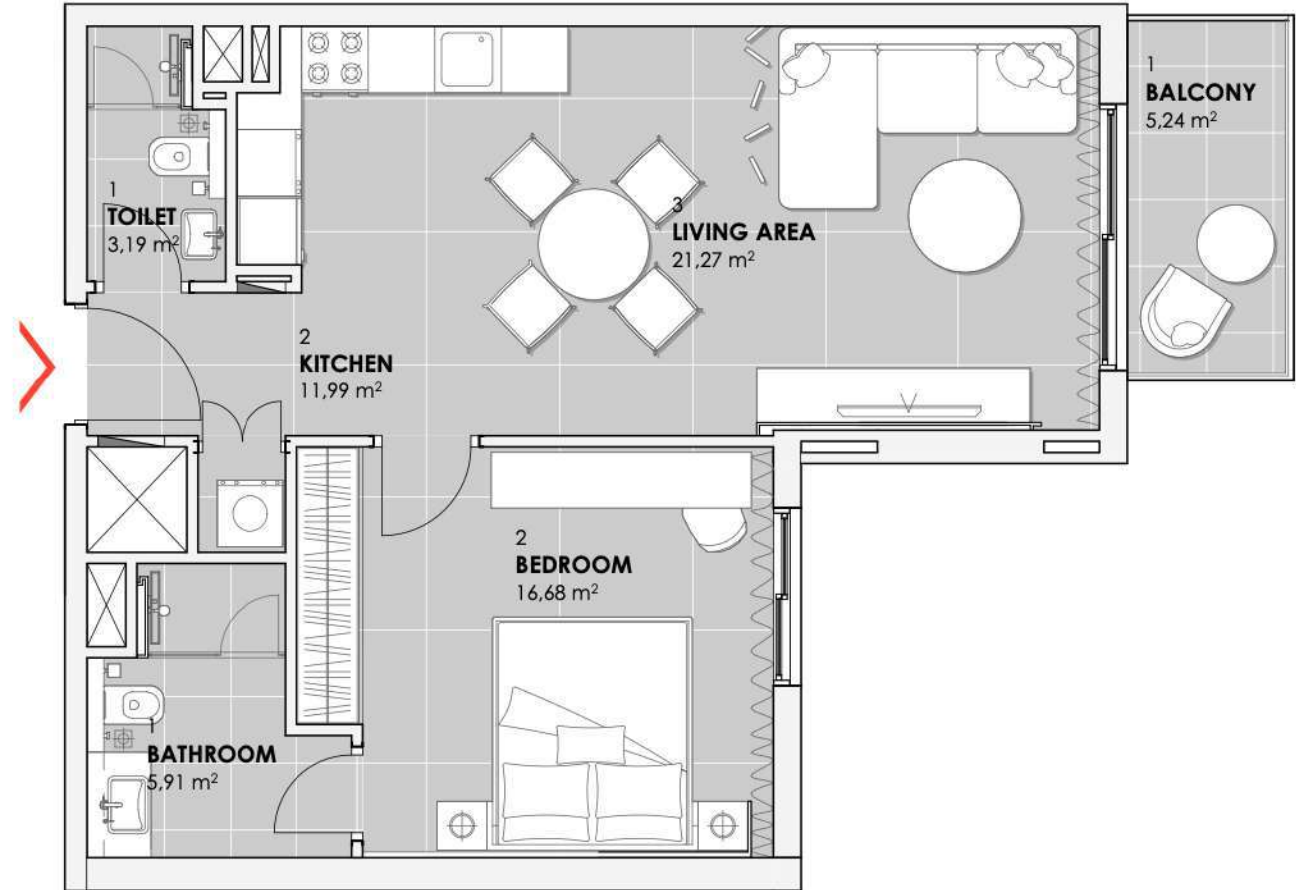
ONE BEDROOM APARTMENT TYPE A

Apt. no. 201, 301, 401, 501, 601, 701, 801, 901, 1001

Second floor - Tenth floor



NO. OF UNITS		SUITE AREA		BALCONY/TERRACE AREA		TOTAL AREA	
		SQ.M	SQ.FT	SQ.M	SQ.FT	SQ.M	SQ.FT
FLAT NO. 201	1BR	59.03	635.39	5.24	56.40	64.27	691.80
FLAT NO. 301	1BR	59.03	635.39	5.24	56.40	64.27	691.80
FLAT NO. 401	1BR	59.03	635.39	5.24	56.40	64.27	691.80
FLAT NO. 501	1BR	59.03	635.39	5.24	56.40	64.27	691.80
FLAT NO. 601	1BR	59.03	635.39	5.24	56.40	64.27	691.80
FLAT NO. 701	1BR	59.03	635.39	5.24	56.40	64.27	691.80
FLAT NO. 801	1BR	59.03	635.39	5.24	56.40	64.27	691.80
FLAT NO. 901	1BR	59.03	635.39	5.24	56.40	64.27	691.80
FLAT NO. 1001	1BR	59.03	635.39	5.24	56.40	64.27	691.80

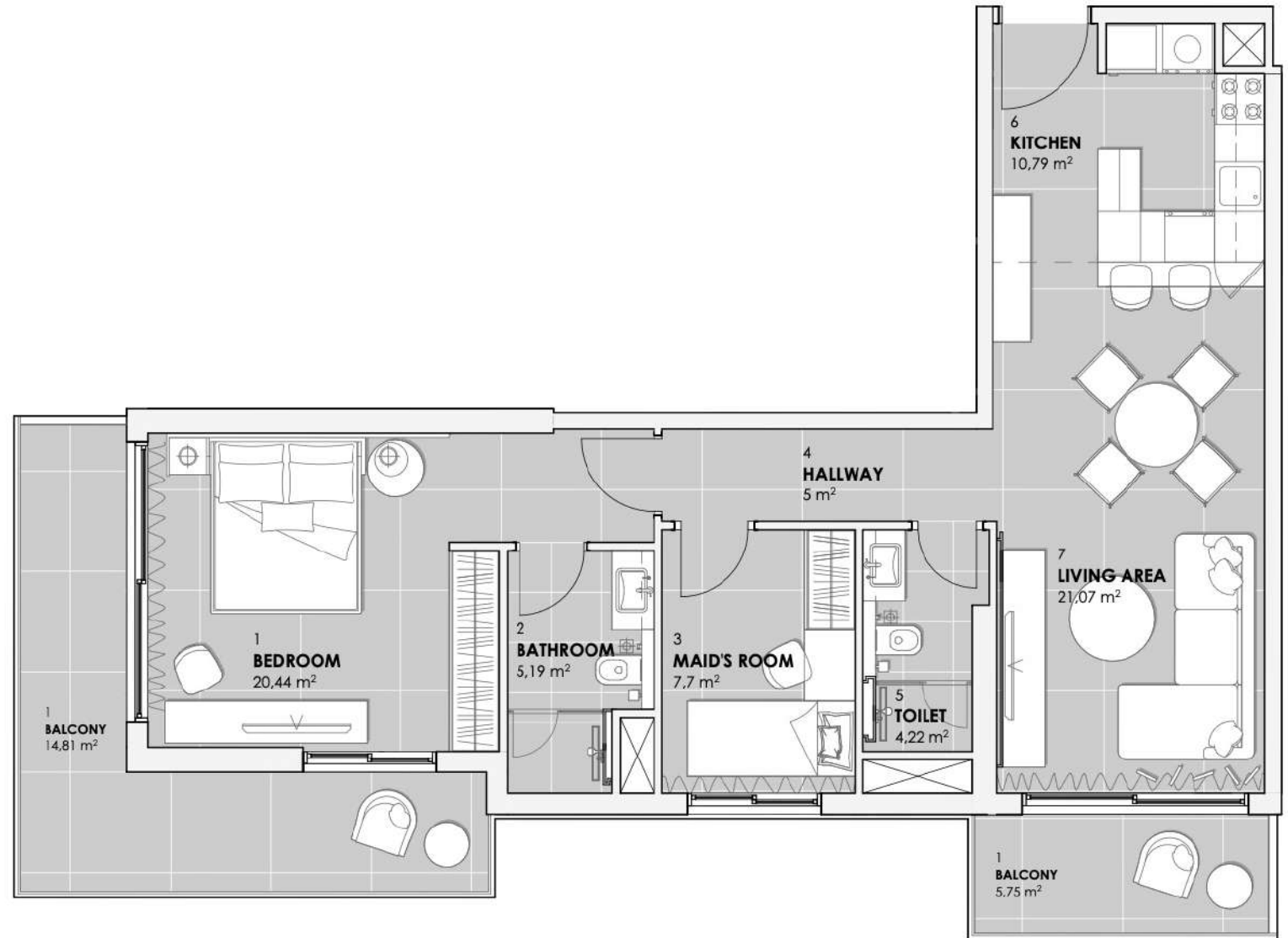
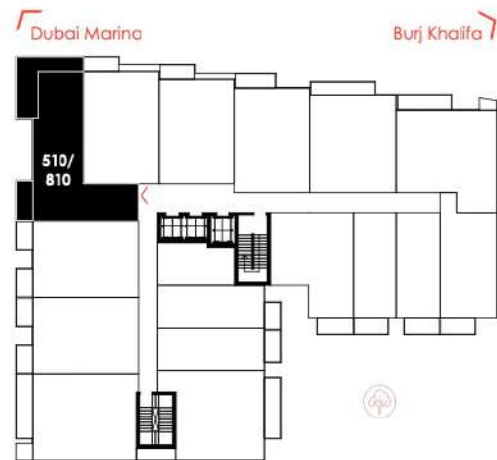


ONE BEDROOM FROM 691.80 SQ FT TO 1020.10 SQ FT

ONE BEDROOM APARTMENT TYPE C

Apt. no. 510, 810

Fifth floor, eighth floor





One Bedroom



One Bedroom



One Bedroom



One Bedroom



One Bedroom



One Bedroom



One Bedroom

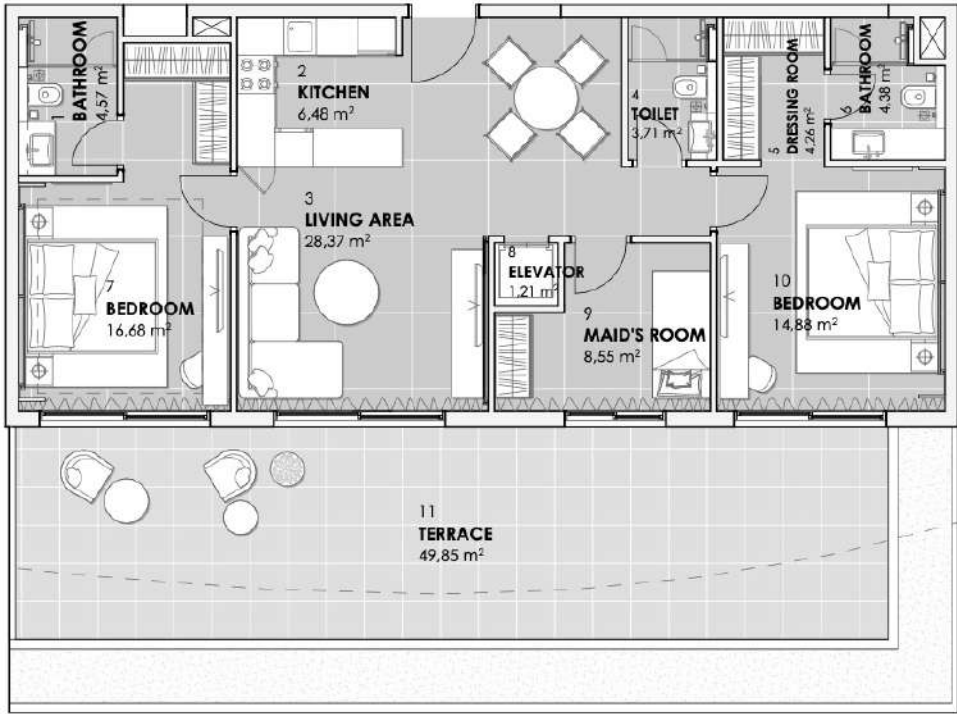
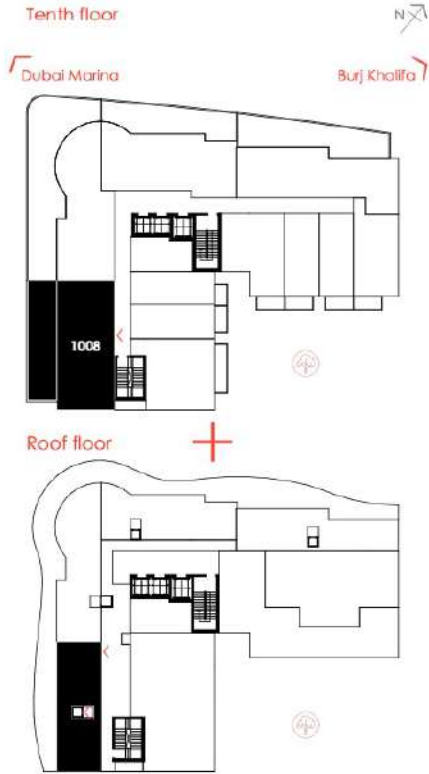


One Bedroom

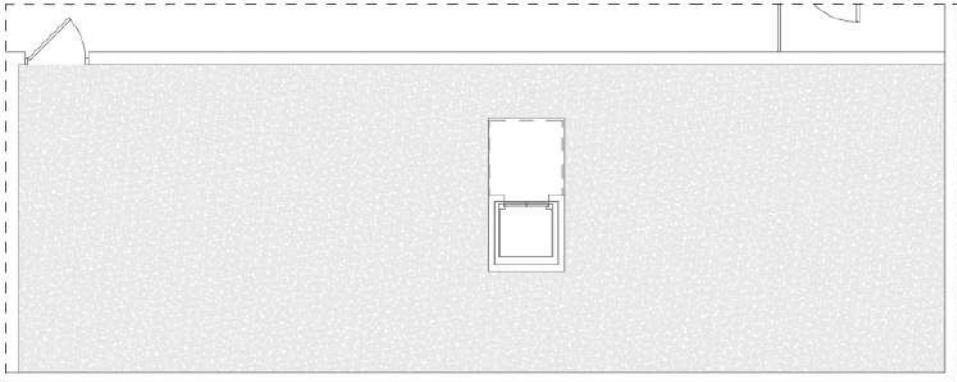
TWO BEDROOM FROM 2337.58 SQ FT TO 3010.24 SQ FT

TWO BEDROOM APARTMENT TYPE A

Apt. no. 1008



Roof terrace plan

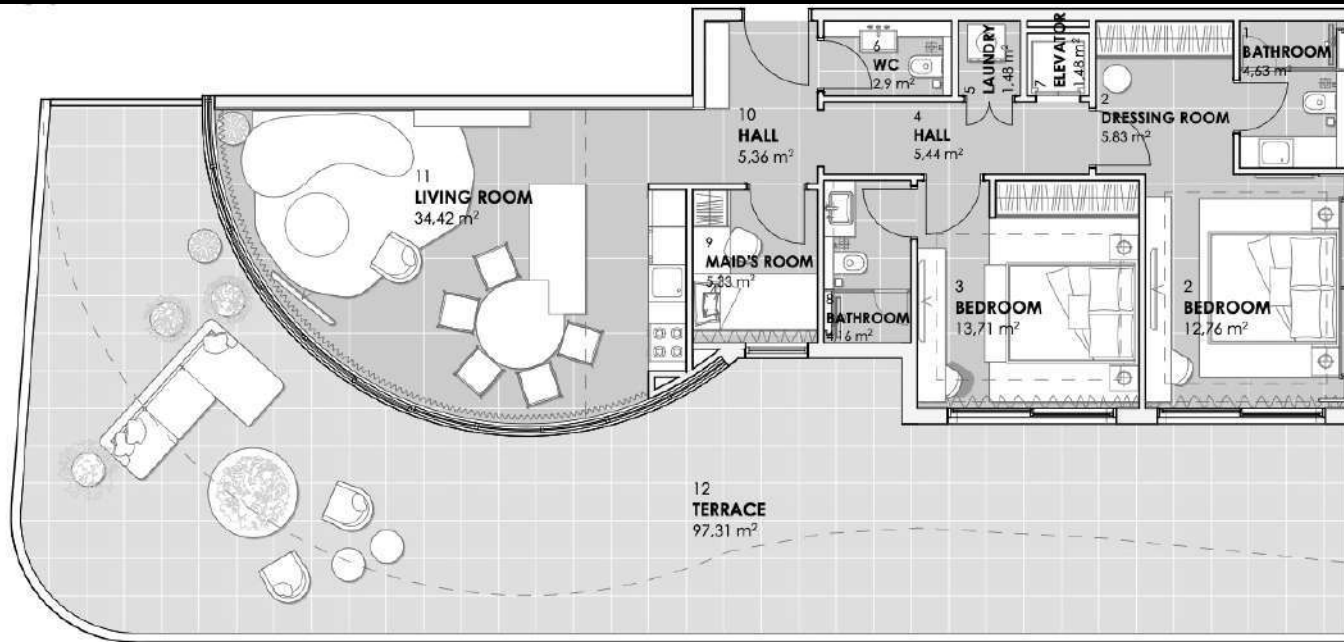
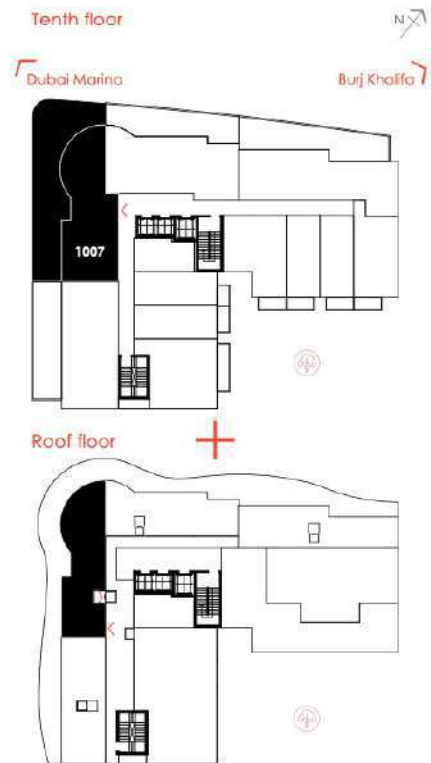


NO. OF UNITS	SUITE AREA		BALCONY/TERRACE AREA		ROOF TERRACE AREA		TOTAL AREA		
	SQ.M	SQ.FT	SQ.M	SQ.FT	SQ.M	SQ.FT	SQ.M	SQ.FT	
FLAT NO. 1008	28R	93.79	1,009.55	49.85	536.56	73.53	791.47	217.17	2,337.58

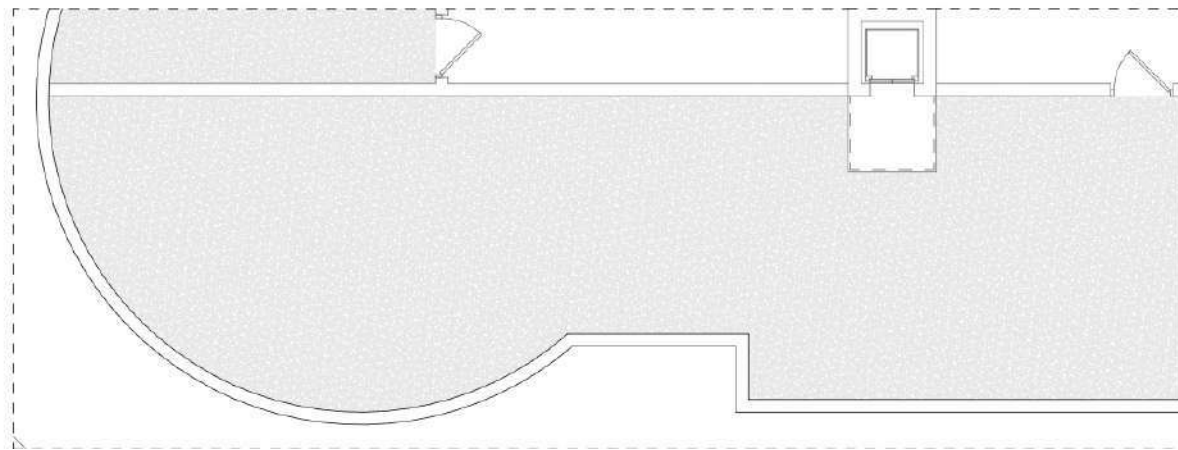
TWO BEDROOM FROM 2337.58 SQ FT TO 3010.24 SQ FT

TWO BEDROOM APARTMENT TYPE B

Apt. no. 1007



Roof terrace plan



NO. OF UNITS	SUITE AREA		BALCONY/TERRACE AREA		ROOF TERRACE AREA		TOTAL AREA		
	SQ.M.	SQ.FT.	SQ.M.	SQ.FT.	SQ.M.	SQ.FT.	SQ.M.	SQ.FT.	
FLAT NO. 1007	2BR	99.27	1,057.77	97.31	1,047.44	84.08	905.03	279.66	3,010.24



Two Bedroom



Two Bedroom



Two Bedroom



Two Bedroom



Two Bedroom



Two Bedroom



Two Bedroom



Two Bedroom





Two Bedroom



Two Bedroom



Two Bedroom

Two Bedroom



PAYMENT PLAN

5%
AT THE TIME OF BOOKING

15%
15 DAYS AFTER THE RESERVATION DATE

10%
60 DAYS AFTER THE RESERVATION DATE

10%
FEBRUARY 2024

10%
JULY 2024

10%
OCTOBER 2024

40%
ON COMPLETION (JULY 2025)



PRICES FROM

STUDIO AED 515,000 / \$
140,000

ONE BEDROOM AED
751,000 / \$ 205,000

TWO BEDROOM AED
2,220,700 / \$ 605,000

